

Disadvantaged Business Enterprise (DBE) Program

TABLE OF CONTENTS

Section 1.	Policy Statement and Program Objectives 1.1 Policy Statement and Program Objectives
Section 2.	General Requirements 2.1 Applicability 2.2 Definitions 2.3 Non-discrimination requirements 2.4 Record keeping requirements 2.4.1 Reporting to USDOT, FTA 2.4.2 Bidder's List 2.5 Federal Financial Assistance Agreement
Section 3.	Responsibility for DBE Program Implementation 3.1 Gainesville and RTS Organizational Structure 3.2 DBE Liaison Officer (DBELO) 3.3 Reconsideration Official
Section 4.	Administrative Requirements 4.1 Financial Institutions 4.2 DBE Directory 4.3 Overconcentration 4.4 Business Development Programs
Section 5.	Determining, Meeting and Counting Overall Annual DBE Goal 5.1 Method 5.2 TVM Certification 5.3 Race Neutral Measures 5.4 Contract Goals 5.5 Good Faith Efforts 5.6 Counting DBE Participation
Section 6.	Certification Procedures 6.1 Unified Certification Program 6.2 Procedures
Section 7.	Compliance and Enforcement 7.1 Information, Confidentiality and Cooperation 7.2 Monitoring Work/Payment to DBEs
Section 8.	Attachments

SECTION 1. POLICY STATEMENT AND PROGRAM OBJECTIVES

1.1 Policy Statement and Program Objectives

The City of Gainesville, FL has established a Disadvantaged Business Enterprise (DBE) program in accordance with regulations of the U.S. Department of Transportation (DOT), 49 CFR Part 26. The Regional Transit System (RTS), a department of the City of Gainesville, receives Federal financial assistance from the Department of Transportation, and as a condition of receiving this assistance, the City of Gainesville has signed an assurance that it will comply with 49 CFR Part 26.

It is the policy of the City of Gainesville to ensure that DBEs as defined in part 26, have an equal opportunity to receive and participate in DOT-assisted contracts. It is also our policy:

1. To ensure that nondiscrimination in the award and administration of DOT-assisted contracts;
2. To create a level playing field on which DBEs can compete fairly for DOT-assisted contracts;
3. To ensure that the Department's DBE program is narrowly tailored pursuant to applicable law;
4. To ensure that only firms that fully meet 49 CFR Part 26 eligibility standards are permitted to participate as DBEs;
5. To help remove barriers to the participation of DBEs in DOT-assisted contracts; and
6. To assist the development of firms that can compete successfully in the marketplace outside the DBE program.

These policies will be implemented through RTS' DBE program. The RTS Program Coordinator has been designated as the DBE Liaison Officer (DBELO). In that capacity, the RTS Program Coordinator is responsible for implementing all aspects of the DBE program. Implementation of the DBE program is accorded the same priority as compliance with all other legal obligations incurred by the City of Gainesville in its financial assistance agreements with the Department of Transportation. All aspects of the DBE program will be fully and actively endorsed and practiced by the City of Gainesville Regional Transit System (RTS) and its contractors and employees. All City of Gainesville RTS project managers and support staff members are responsible for supporting this policy and will be evaluated on their efforts and results to comply with these policies.

The City of Gainesville has disseminated this policy statement to the Gainesville City Commission and all of the components of the organization. We have distributed this statement to DBE and non-DBE business communities that perform work for us on DOT-assisted contracts. Distribution of this policy statement shall also occur through website posting and other forms of electronic media, through print media, and during outreach events involving businesses and/or community organizations located within the relative market area where work is to be performed on DOT-assisted contracts.

Original Signature on File

Jesus Gomez, RTS Director / Reconsideration Official

Date

Original Signature on File

Kimberly Sweigard, RTS Program Coordinator / DBELO

Date

SECTION 2. GENERAL PROGRAM REQUIREMENTS

2.1 Applicability

The City of Gainesville is the recipient of federal transit funds authorized by Titles I, III, V, and VI of ISTEA, Pub. L. 102-240 or by Federal transit laws in Title 49, U.S. Code, or Titles I, II, and V of the Teas-21, Pub. L. 105-178.

2.2 Definitions

The City of Gainesville RTS has adopted the definitions contained in 49 CFR Section 26.5 of Part 26. The definitions pertaining to this DBE program may be viewed at <http://www.ecfr.gov/>.

2.3 Non-discrimination requirements

The City of Gainesville RTS will never exclude any person from participation in, deny any person the benefits of, or otherwise discriminate against anyone in connection with the award and performance of any contract covered by 49 CFR Part 26 on the basis of race, color, sex, or national origin. In administering its DBE program, the City of Gainesville RTS will not, directly or through contractual or other arrangements, use criteria or methods of administration that have the effect of defeating or substantially impairing accomplishment of the objectives of the DBE program with respect to individuals of a particular race, color, sex, or national origin.

2.4 Record keeping requirements

2.4.1 Uniform Report of DBE Awards or Commitments and Payments

The City of Gainesville RTS will report DBE participation to the Federal Transit Administration (FTA) using the Uniform Report of DBE Awards or Commitments and Payments, found in Appendix B to the DBE regulation.

2.4.2 Bidders/Proposers List

The City of Gainesville RTS will create a bidders list, consisting of information about all DBE and non-DBE firms that bid or quote on DOT-assisted contracts. The purpose of this requirement is to allow use of the bidder's list approach to calculating overall goals. The bidder's list will primarily be obtained by requiring the prime bidder to provide a list of all firms that quote to the prime on subcontracts. The following information will be provided by the prime bidder for all firms that quote to the prime bidder on subcontracts:

1. Firm name;
2. Firm address;
3. Firm's status as a DBE or non-DBE;
4. The age of the firm; and
5. The annual gross receipts of the firm.

2.5 Federal Financial Assistance Agreement

2.5.1 General Assurance

The City of Gainesville RTS has assigned the following assurance, applicable to all DOT-assisted contracts and their administration. The following language will appear in financial assistance agreements with sub-recipients:

The City of Gainesville shall not discriminate on the basis of race, color, national origin, or sex in the award and performance of any DOT-assisted contract or in the administration of its DBE program or the requirement of 49 CFR part 26. The City of Gainesville shall take all necessary and reasonable steps under 49 CFR part 26 to ensure nondiscrimination in the award and administration of DOT-assisted contracts. The recipient's DBE program as required by 49 CFR part 26 and as approved by DOT, is incorporated by reference in this agreement. Implementation of this program is a legal obligation and failure to carry out its terms shall be treated as a violation of this agreement. Upon notification to the City of Gainesville of its failure to carry out its approved program, the Department may impose sanctions as provided for under Part 26 and may, in appropriate cases, refer the matter for enforcement under 18 U.S.C 1001 and/or the Program Fraud Civil Remedies Act of 1986 (31 U.S.C. 3801 et seq.).

2.5.1a Contract Assurance

The City of Gainesville Regional Transit System will ensure that the following clause is placed in every DOT-assisted contract and subcontract:

The contractor, sub recipient or subcontractor shall not discriminate on the basis of race, color, national origin, or sex in the performance of this contract. The contractor shall carry out applicable requirements of 49 CFR part 26 in the award and administration of DOT-assisted contracts. Failure by the contractor to carry out these requirements is a material breach of this contract, which may result in the termination of this contract or such other remedy, as the recipient deems appropriate. [Note: This language is to be used verbatim, as it is stated in 26.13(b)]

SECTION 3. ADMINISTRATIVE REQUIREMENTS

3.1 DBE Program Updates

Since the City of Gainesville RTS has received a grant of \$250,000 or more in FTA planning capital, and or operating assistance in a federal fiscal year, we will continue to carry out this program until all funds from DOT financial assistance have been expended. We will provide updates representing significant changes in the program to DOT.

3.2 Disadvantaged Business Enterprise Liaison Officer (DBELO) and Consideration Official

The Transit Director appoints the Disadvantaged Business Enterprise Liaison Officer (DBELO) to administer the DBE Program in RTS contracts. The DBELO, who also serves as the consideration official, shall report and have direct, independent access to the Transit Director concerning all DBE program matters. The current DBELO is:

Kimberly Sweigard
34 SE 13th Road
Gainesville, Florida 32601
Telephone: (352) 393-7852
E-mail: sweigardka@cityofgainesville.org

The DBELO is responsible for the following duties and responsibilities:

1. Developing, managing and implementing the DBE Program on a day-to-day basis;
2. Carrying out technical assistance activities for DBE firms (which may include workshops/seminars on doing business with the City);
3. Disseminating information on available RTS-related business opportunities so that DBE firms are provided an equitable opportunity to bid on all RTS-related contracts as provided by 49 CFR, Part 26;
4. Establishing communication procedures to assure the DBEs are informed concerning available contract opportunities;
5. Maintaining a data bank of DBEs in their local community and accessing the State database of certified DBEs;
6. Assuring liaison duties among the community, contractors, service providers, and the City of Gainesville;
7. Checking to see if businesses are DBE certified;
8. Coordinating with the City of Gainesville Regional Transit System (RTS) staff on the establishment of goals for the DBE Program;
9. Establishing procedures to ensure that bidder/proposers make good faith efforts to meet DBE contract goals;
10. Developing methods by which the City of Gainesville will require contractor compliance with applicable DBE requirements;
11. Making reports to the City of Gainesville on the progress of the DBE Program; and
12. Making reports to the Federal Transportation Administration and the Florida Department of Transportation (FDOT) on the status of DBE procurement.

3.3 DBE Financial Institutions

It is the policy of the City of Gainesville to investigate the full extent of services offered by financial institutions owned and controlled by socially and economically disadvantaged individuals in the community, to make reasonable efforts to use these institutions, and to encourage prime contractors on DOT-assisted contracts to make use of these institutions. We have made the following efforts to identify and use such institutions:

- Participate in small business workshops and trade shows and speak with financial institution representatives
- Reference the Bureau of the United States Department of Treasury, Financial Management Service listing of Minority owned financial institutions (www.fms.treas.gov)

To date RTS has not identified any financial institutions that are owned and controlled by socially or economically disadvantaged individuals in the local community. To re-evaluate the availability of DBE financial institutions annually, RTS will coordinate with City Departments focused on small and minority business development as well as other local and regional small business development organizations to update this list annually. Some local and regional partners include:

- The City of Gainesville Equal Opportunity Office, Small and Minority Business Procurement;
- Jacksonville Transportation Authority (JTA), Contract Compliance & Civil Rights Department
- The FDOT Equal Opportunity Office; and,
- The Florida Small Business Development Center at the University of North Florida.

3.4 Prompt Payment

The City of Gainesville will include the following clause in each DOT-assisted prime contract:

The prime contractor agrees to pay each subcontractor under this prime contract for satisfactory performance of its contract no later than 30 days from the receipt of each payment the prime contract receives from the City of Gainesville. Any delay or postponement of payment from the above referenced time frame may occur only for good cause following written approval on the City of Gainesville. This clause applies to both DBE and non-DBE subcontracts.

Upon contract award, the City of Gainesville Regional Transit System does not count the participation of the DBE subcontractor or DBE supplier toward the prime contractor's achievements or its overall goal until the amount being counted toward the goal has been paid to the DBE. The contractor is required to submit documentation to the City of Gainesville Regional Transit System to validate payment to the DBE and the amount of the DBE achievement or goal achieved to date.

Payment will be due to the Contractor from the City of Gainesville thirty (30) days after receipt of invoice, provided that Contractor shall not submit more than one invoice per thirty-day period. Payment may be withheld by the City of Gainesville due to failure by the contractor to comply with Specifications, because unacceptable equipment or materials were delivered as determined by the City's inspection or failure by the Contractor to comply with the "Prompt Payment: Late Payments by Contractors to Subcontractors and Material Suppliers; penalty:" clause. The City shall notify the Contractor of any unsatisfactory performance or non-compliance with the "Later Payments by Contractors or Subcontractors and Material Suppliers' penalty;" clause as soon as practicable so that it can be corrected without delaying payment if possible.

Prompt Payment: Late Payments by Contractors to Subcontractors and Material Suppliers; penalty:

When a contractor receives from the City of Gainesville any payment for contractual services, commodities, supplies, or construction contracts, the contractor shall pay such moneys received to each subcontractor and material supplier at the time of receipt. If the contractor receives less than full payment, then the contractor shall be required to disburse only the funds received on a pro rata basis with the contractor, subcontractors and material suppliers, each receiving a prorated portion based on the amount due on the payment. If the contractor without reasonable cause fails to make payment as required by this section to subcontractors and material suppliers within 7 working days after the receipt by the contractor of full or partial payment, the contractor shall pay to the subcontractors and material suppliers a penalty in the amount of one-half of 1 percent of the amount due, per day, for the expiration of the period allowed herein for payment. Such penalty shall be in addition to actual payments owed and shall not exceed 15 percent of the outstanding balance due.

3.5 Retainage Mechanisms

The prime contractor agrees to return retainage payments to each subcontractor within 30 days after the subcontractors work is satisfactorily completed. Any delay or postponement of payment from the above reference time frame may occur only for good cause following written approval of the City of Gainesville RTS. This clause applies to both DBE and non-DBE subcontracts.

Retainage is also subject to this prompt payment requirement and must be returned to the subcontractor or material supplier whose work has been completed, even if the prime contract has not been completed.

3.6 Monitoring and Enforcement of Prompt Payment and Retainage

The City of Gainesville RTS has established the following to monitor and enforce that prompt payment and return of retainage is in fact occurring:

The City of Gainesville Regional Transit System has established a contract clause to require prime contractors to pay subcontractors and suppliers for satisfactory performance of their contracts. All contracts shall contain the following provision:

"Failure of any contractor to comply with the City of Gainesville's Disadvantaged Business Enterprise Program shall constitute a breach of this contract. Upon such breach, the City of Gainesville may at its option, terminate this contract and/or pursue any and all other appropriate remedies available under this contract or otherwise under applicable law."

After the contract is awarded, the City of Gainesville RTS will require prime contractors on funded FTA contracts to submit information on the subcontract awards made to DBEs and non-DBEs. The information must be reported within 10 days of the award and includes the firm's name, a description of the Work to be performed, and contract amount.

Records of all progress payments made by prime contractors to DBE subcontractors and DBE suppliers are required on a monthly basis.

3.7 DBE Directory

The City of Gainesville DBELO accesses the FDOT maintained list of certified Disadvantaged Business Enterprises within Gainesville RTS' relative market area. This Directory will be available during normal business hours at the City of Gainesville Regional Transit System Office for use by prospective contractors and the public on request in identifying DBEs with skills particular to their contracting and business needs. Normal business hours will be from 7:00 a.m. to 6:00 p.m., Monday through Thursday. Below is the address of where the DBE Directory is located:

City of Gainesville-Regional Transit System
34 SE 13th Road
Gainesville, FL 32601
Telephone Number: (352) 393-7850

The Directory contains the following minimum information on each firm listed:

1. Company name
2. Address
3. Telephone number
4. Type of commodity or service provided
5. Type of DBE (ownership)
6. Contact person

Information on form of organization, work experience, date business established, and ownership percentage can be obtained from the DBELO.

The Directory will be updated at least annually and will include any additional DBEs certified during that period. In the event a bidder/proposer names other DBEs it desires to use, these firms will be included in the Directory, if and when they become certified.

Firms certified by Federal Agencies will be automatically added to the Directory upon submission and acceptance of the federal certification. Firms certified by a State or other governmental agency will be added to the Directory only after appropriate documentation has been received and reviewed by the DBELO.

In addition to the local Directory, RTS regularly uses a statewide Directory of certified DBEs maintained by the FDOT. That Directory is available at:

www3.dot.state.fl.us/EqualOpportunityOffice/biznet/mainmenu.asp

3.8 Overconcentration

The City of Gainesville RTS has not identified overconcentration in its relative market. The determination of no overconcentration is based on the low number of DBEs within the relative market. This determination is substantiated by the relative availability of DBEs in the 2013 overall DBE goal setting process. The City of Gainesville RTS will re-evaluate for overconcentration every three years to coincide with the overall DBE goal setting process. The next overconcentration analysis will occur on or before by August 1, 2016.

3.9 Business Development Programs

The City of Gainesville RTS has not established a business development program. We will re-evaluate the need for such a program every year. The City of Gainesville RTS will also review current programs and practices to identify opportunities to increase the participation of small businesses in future procurements.

3.10 Monitoring and Enforcement Mechanisms to ensure compliance with 49 CFR part 26

The City of Gainesville RTS will take the following monitoring and enforcement mechanisms to ensure compliance with 49 CFR Part 26.

1. We will bring to the attention of the Department of Transportation any false, fraudulent, or dishonest conduct in connection with the program, so that DOT can take the steps (e.g., referral to the Department of Justice for criminal prosecution, referral to the DOT Inspector General, action under suspension and debarment or Program Fraud and Civil Penalties rules) provided in 26.109.
2. We will consider similar action under our own legal authorities, including responsibility determinations in future contracts. Attachment 3 lists the regulation, provisions, and contract remedies available to us in the events of non-compliance with the DBE regulation by a participant in our procurement activities.
3. We will also provide a monitoring and enforcement mechanism to verify that work committed to DBEs at contract award is actually performed by the DBEs. This will be accomplished a written certification that the DBELO have reviewed contracting records and monitored work sites on which DBEs are performing, and will occur for each contract/project on which DBEs are participating.
4. We will keep a running tally of actual payments to DBE firms for work committed to them at the time of contract award.

SECTION 4: SMALL BUSINESS PARTICIPATION (49 CFR § 26.39)

The City of Gainesville has incorporated the following non-discriminatory elements into its DBE program, in order to facilitate competition on DOT-assisted public works projects by small business concerns for both DBEs and non-DBE small businesses:

4.1 Contracting Requirements

The City of Gainesville RTS will take the following steps to eliminate obstacles to the participation by small business concerns in contracting opportunities including:

- (a) Unbundling contracts whenever possible to create prime contracts for small businesses;
- (b) Eliminating or reducing unnecessary and unjustified bonding of contract requirements, such as restrictive bonding or insurance requirements that may preclude small business participation in procurements as prime contractors.
- (c) Requiring prime contractors on large and/or multi-year design-build contracts to specify elements of the contract or specific subcontracts that are of a size that small businesses, including DBEs, can reasonably perform

4.2 Small Business Definition

The City of Gainesville follows the Small Business Administration's (SBA) definition of Small Business Concern:

SBA defines a small business concern as one that is independently owned and operated, is organized for profit, and is not dominant in its field. Depending on the industry, size standard eligibility is based on the average number of employees for the preceding twelve months or on sales volume averaged over a three-year period.

4.3 Small Business Program

The City of Gainesville will implement a small business development program within 9 months following FTA approval of the DBE program. The program will foster small business participation and will include specific outreach efforts that are coupled with a strategy to create contracting opportunities for small businesses.

4.4 Efforts to Increase Participation and Outreach

The City of Gainesville will increase small business (both DBE and non-DBE small businesses) participation on contracts by:

- Removing unnecessary and unjustified bundling of contract requirements;
- Including race-neutral small business set-asides for prime contracts below values requiring full and open competition;
- Requiring bidders on large contracts to identify and/or provide specific subcontracts appropriate for small business participation;
- Providing outreach, technical assistance and training opportunities for small businesses through various partnerships;
- Sponsoring and participating in business outreach sessions conducted by local municipalities, non-profit agencies, local chamber of commerce, and minority and women owned business organizations, which are designed to introduce small and minority-owned businesses to the City's procurement processes and practices; and,
- Advertising contracting opportunities through various outlets, including local newspapers, minority based publications, trade publications and the City's website.

SECTION 5 GOALS, GOOD FAITH EFFORTS AND COUNTING

5.1 Set-asides or Quotas

The City of Gainesville does not use quotas in any way in the administration of this DBE program.

5.2 Overall Goals

In accordance with Section 26.45, the City of Gainesville RTS will submit its triennial overall DBE goal to the FTA on August 1 of the year specified by FTA. The City of Gainesville RTS is assigned to FTA's Group C, with the next overall DBE Goal for fiscal years 2016/17 to fiscal year 2018/19 due on August 1, 2016.

The City of Gainesville will also request use of project-specific DBE goals as appropriate, and/or will establish project-specific DBE goals as directed by FTA.

General Overall Goal Process

The City of Gainesville RTS overall DBE goal is based on demonstrable evidence of the availability of ready, willing and able DBEs relative to all businesses ready, willing and able to participate on DOT-assisted contracts. The goal must reflect what the City of Gainesville RTS expects the level of DBE participation would be absent the effects of discrimination. The process generally used by the City of Gainesville RTS to establish overall DBE goals is based on the "Two-Step" goal setting process as described in Section 26.45(c) – (d):

Step 1: Develop a Base Figure: to establish the relative availability of DBEs. The relative availability of DBEs is the total number of ready, willing and able DBE firms divided by the total number of all firms for the types of contracts you anticipate awarding during the goal period.

Step 2: If necessary, adjust the base figure based on evidence available in your area to determine the overall goal. Gainesville RTS will consider such evidence as:

- Current capacity of DBEs to perform the work
- Past participation if contracting opportunities are similar
- Input from interested parties (i.e., local chamber of commerce, minority business associations)
- Historical median of past participation
- Disparity studies (if not used in Step One)

Before establishing the overall goal each year, the City of Gainesville RTS will consult with the City of Gainesville's Equal Opportunity Department, the FDOT Equal Opportunity Office's DBE Program staff members, nearby Unified Certification Program (UCP) members, and community organizations. Following this consultation, we will publish a notice of the proposed overall goals, informing the public that the proposed goal and its rationale are available for inspection during normal business hours at your principal office for 30 days following the date of the notice, and inform the public that you and DOT will accept comments on the goals for 45 days from the date of the notice. Gainesville RTS will use a general circulation newspaper such as the Gainesville Sun, a trade publication such as APTA Passenger Transport and a minority-focused media such as The Guardian newspaper to notify citizens and interested businesses about the goal setting process. Normally, we will issue this notice by June 1 or each year. The notice must include addresses to which comments may be sent and addresses (including offices and websites) where the proposal may be reviewed.

Our overall goal submission to DOT will include: the goal (including the breakout of estimated race-neutral and race-conscious participation, as appropriate); a copy of the methodology, worksheets, etc., used to develop the goal; a summary of information and comments received during this public participation process and our responses; and proof of publication of the goal in media outlets listed above.

We will begin using our overall goal on October 1 of the specified year, unless we have received other instructions from DOT. If we establish a goal on a project basis, we will begin using our goal by the time of the first solicitation for a DOT-assisted contract for the project. Our goal will remain effective for the duration of the three-year period established and approved by FTA.

5.3 Goal Setting and Accountability

If the awards and commitments shown on Gainesville RTS' Uniform Report of Awards and Commitments and payments at the end of the year are less than the overall applicable goal to that fiscal year, we will:

1. Analyze in detail the reason for the difference between the overall goal and the actual awards/commitments;
2. Establish specific steps and milestones to correct the problems identified in the analysis; and
3. Submit the goal to FTA within 90 days of the end of the affected fiscal year.

5.4 Transit Vehicle Manufacturers (TVM) Certification

The City of Gainesville RTS requires that each transit vehicle manufacturer, as a condition of being authorized to bid or propose on FTA-assisted transit vehicle procurements, certify that it has complied with the requirements of 49 CFR part 26. The City of Gainesville RTS does not include FTA assistance used in transit vehicle procurements in the base amount from which the overall goal is calculated.

5.5 Meeting Overall Goals/Contract Goals

The City of Gainesville RTS will meet the maximum feasible portion of its overall goal by using race-neutral means of facilitating DBE participation. Race-neutral DBE participation includes anytime a DBE wins a prime contract through customary competitive procurement procedures, is awarded a subcontract on a prime contract that does not carry a DBE goal, or even if there is a DBE goal, wins a subcontract from a prime contractor that did not consider its DBE status in making the award.

The City of Gainesville RTS uses the following race-neutral means to increase DBE participation:

- (1) Arranging solicitations, times for the presentation of bids, quantities, specifications, and delivery schedules in ways that facilitate DBEs, and other small businesses, participation (e.g. unbundling large contracts to make them more accessible to small businesses, requiring or encouraging prime contractors to subcontract portions of work that they might otherwise perform with their own forces);
- (2) Providing assistance in overcoming limitations such as inability to obtain bonding or financing;
- (3) Providing technical assistance and other services;
- (4) Carrying out information and communications programs on contracting procedures and specific contract opportunities;
- (5) Implementing a supportive services program to develop and improve immediate and long-term business management, record keeping, and financial and accounting capability for DBEs and other small businesses;
- (6) Providing services to help DBEs, and other small businesses, improve long-term development, increase opportunities to participate in a variety of kinds of work, handle increasingly significant projects, and achieve eventual self-sufficiency;
- (7) Establishing a program to assist new, start-up firms, particularly in fields in which DBE participation has historically been low;
- (8) Ensuring distribution of the DBE directory, through print and electronic means, to the widest feasible universe of potential prime contractors; and
- (9) Assisting DBEs, and other small businesses, to develop their capability to utilize emerging technology and conduct business through electronic media.

The City of Gainesville RTS estimates that, in meeting its overall DBE goal each year, it obtains the entire goal by race-neutral participation and through race-conscious measures.

The following is a summary of the basis of the City of Gainesville RTS' estimated use of race-neutral and race-conscious DBE participation:

- The City of Gainesville RTS has had a lot of participation of DBEs in local procurement programs in the previous years.
- The City of Gainesville RTS distributes bids to all DBEs and non-DBEs.

The City of Gainesville RTS will adjust the estimated breakout of race-neutral and race-conscious participation as needed to reflect actual DBE participation according to §26.51(f) and it will track and report race-neutral and race-conscious participation separately. For reporting purposes, race-neutral DBE participation includes, but is not necessarily limited to, the following: DBE participation through a prime contract a DBE obtains through customary competitive procurement procedure; DBE participation through a subcontract on a prime contract that does not carry a DBE goal; DBE participation on a prime contract exceeding a contract goal; and DBE participation through a subcontract from a prime contractor that did not consider a firm's DBE status in making the award.

Contract Goals: The City of Gainesville RTS will use contract goals to meet any portion of the overall goal that it does not project being able to meet using race-neutral means. Contract goals are established so that, over the period to which the overall goal applies, they will cumulatively result in meeting any portion of the overall goal that is not projected to be met through the use of race-neutral means.

Contract goals will be established only on those DOT-assisted contracts that have subcontracting possibilities. The City of Gainesville Regional Transit System need not establish a contract goal on every such contract, and the size of contract goals will be adapted to the circumstances of each such contract (e.g., type of location of work, availability of DBEs to perform the particular type of work).

5.6 Breakout of race-neutral and race conscious participation

The breakout of estimated race-neutral and race-conscious participation can be found in Attachment 5 to this program. This section of the program will be updated when the goal calculation is updated.

5.7 Good Faith Efforts Procedures

5.7.1 Award of Contracts with a DBE Contract Goal:

The City of Gainesville Regional Transit System will award the DBE contract only to a bidder/proposer who makes a good faith effort to meet the DBE contract goal. The City of Gainesville RTS will determine whether a bidder/proposer has made good faith efforts if the bidder/proposer does the following:

- (1) Documents commitments for participation by DBE firms sufficient to meet the goal; or
- (2) Documents adequate good faith efforts. The bidder/proposer must provide documentation with its bid/proposal that it took all necessary and reasonable steps to achieve the DBE goal or other requirement of 49 CFR Part 26 which by its scope, quantity, quality, intensity and appropriateness of the different kinds of efforts the bidder/proposer made to meet the objective, could reasonably have been expected to obtain sufficient DBE participation, even if it was not successful.

The City of Gainesville RTS will determine whether a bidder/proposer has put forth adequate good faith efforts. Mere pro forma efforts are not good faith efforts to meet the DBE contract requirements.

5.7.2 Evaluation of Good Faith Efforts

The following list of types of actions will be considered as a part of the bidder/proposer's good faith efforts to obtain DBE participation. The City of Gainesville RTS Consideration Official is the same as the DBELO identified above in Section 3 of this DBE Program. It is not intended to be a mandatory checklist, nor is it intended to be exclusive or exhaustive. Other factors and types of efforts may be relevant in appropriate cases.

A. Soliciting through all reasonable and available means (e.g. attendance at pre-bid meetings, advertising and/or written notices) the interest of all certified DBEs who have the capability to perform the work of the contract. The bidder/proposer must solicit this interest within sufficient time to allow the DBEs to respond

to the solicitation. The bidder/proposer must determine with certainty if the DBEs are interested, by taking appropriate steps to follow up initial solicitations.

B. Selecting portions of the work to be performed by DBEs in order to increase the likelihood that the DBE goals will be achieved. This includes, where appropriate, breaking out contract work items into economically feasible units to facilitate DBE participation, even when the bidder/proposer might otherwise prefer to perform these work items with its own forces.

C. Providing interested DBEs with adequate information about the plans, specifications, and requirements of the contract in a timely manner to assist them in responding to a solicitation.

D. (1) Negotiating in good faith with interested DBEs. It is the bidder/proposer's responsibility to make a portion of the work available to DBE subcontractors and DBE suppliers and to select those portions of the work or material needs consistent with the available DBE subcontractors and DBE suppliers, so as to facilitate DBE participation. Evidence of such negotiation includes the names, addresses, and telephone numbers of DBEs that were considered; a description of the information provided regarding the plans and specifications for the work selected for subcontracting; and evidence as to why additional agreements could not be reached for DBEs to perform the work.

(2) A bidder/proposer using good business judgment would consider a number of factors in negotiating with subcontractors and suppliers, including DBE subcontractors and DBE suppliers, and would take a firm's price and capabilities as well as contract goals into consideration. However, the fact that there may be some additional costs involved in finding and using DBEs is not in itself sufficient reason for a bidder/proposer's failure to meet the contract DBE goal, as long as such costs are reasonable. Also, the ability or desire of a bidder/proposer to perform the work of the contract with its own organization does not relieve the bidder/proposer of the responsibility to make good faith efforts. Bidder/proposers are not, however, required to accept higher quotes from DBEs if the price difference is excessive or unreasonable. These decisions should, however, be supportable and documented as part of the required Good Faith Efforts.

E. Not rejecting DBEs as being unqualified without sound reasons based on a thorough investigation of their capabilities. The bidder/proposer's standing within its industry, membership in specific groups, organizations, or associations and political or social affiliations (for example union vs. non-union employee status) are not legitimate causes for the rejection or non-solicitation of bids in the bidder/proposer's efforts to meet the project goal.

F. Making efforts to assist interested DBEs in obtaining bonding, lines of credit, insurance as required by the City of Gainesville Regional Transit System or bidder/proposer/contractor.

G. Making efforts to assist interested DBEs in obtaining necessary equipment, supplies, materials or related assistance or services.

H. Effectively using the services of available minority/women community organizations; minority/women contractor's groups; local state, and Federal minority/women business assistance offices; and other organizations as allowed on a case-by-case basis to provide assistance in the recruitment and placement of DBEs.

In determining whether a bidder/proposer has made good faith efforts, the City of Gainesville Regional Transit System may take into account the performance of other bidder/proposers in meeting the contract. For example, when the apparent successful bidder/proposer fails to meet the contract goal, but others meet it, the City of Gainesville Regional Transit System may reasonably raise the question of whether, with additional efforts, the apparent successful bidder/proposer could have met the goal. If the apparent successful bidder/proposer fails to meet the goal, but meets or exceeds the average DBE participation obtained by other bidders/proposers, the City of Gainesville Regional Transit System may view this, in conjunction with other factors, as evidence of the apparent successful bidder/proposer having made good faith efforts.

5.7.3 Information to be submitted:

In solicitations for DOT-assisted contracts for which a contract goal has been established, the City of Gainesville RTS requires the following:

- (1) Award of the contract will be conditioned on meeting the requirements of 49 CFR Part 26.
- (2) All bidder/proposers will be required to submit the following information to the City of Gainesville

Regional Transit System:

- i. The names and addresses of DBE firms that will participate in the contract;
- ii. A description of the work that each DBE will perform;
- iii. The dollar amount of the participation of each DBE firm participating;
- iv. Written documentation of the bidder/proposer's commitment to use a DBE subcontractor whose participation it submits to meet a contract goal;
- v. Written confirmation from the DBE that it is participating in the contract as provided in the prime contractor's commitment; and
- vi. If the contract goal is not met, evidence of good faith efforts.

The bidder/proposer must present the information required by paragraph (2) of this section under seal bid procedures as a matter of responsiveness.

Failure to provide the above required information shall result in the bid/proposal being deemed non-responsive. Upon a bid/proposal being deemed non-responsive, the bid/proposal will be rejected. The City of Gainesville RTS reserves the right to accept or reject any or all bids, reserves the right to waive any or all irregularities, and to award the contract to the responsible and responsive bidder/proposer whose bid is determined by the City of Gainesville RTS to be in its best interest.

The City of Gainesville RTS makes sure all information is complete and accurate and adequately documents the bidder/proposer's good faith efforts before committing itself to the performance of the contract by the bidder/proposer.

5.7.4 Administrative Reconsideration

Within 5 working days of being informed by the City of Gainesville Regional Transit System that it is not responsive because it has not documented sufficient good faith efforts, a bidder/proposer may request administrative reconsideration. Bidder/proposers should make this request in writing to the following reconsideration official:

Jesus Gomez
Transit Director
34 SE 13th Road
Gainesville, FL 32601
TEL: (352) 393-7852 FAX: (352) 334-2607
EMAIL: gomezjm@cityofgainesville.org

As part of this reconsideration, the bidder/proposer will have the opportunity to provide written documentation or argument concerning the issue of whether it met the goal or made adequate good faith efforts to do so. The bidder/proposer will have the opportunity to meet in person with their reconsideration official to discuss the issue of whether it met the goal or made adequate good faith efforts to do so. The City of Gainesville Regional Transit System will send the bidder/proposer a written decision on reconsideration, explaining the basis for finding that the bidder did or did not meet the goal or make adequate good faith efforts to do so. The result of the reconsideration process is not administratively appealable to the Department of Transportation.

5.7.5 Good Faith Efforts when a DBE is Terminated/Replaced on a contract with Contract Goals

The City of Gainesville RTS requires that prime contractors not terminate a DBE subcontractor listed on a bid/contract with a DBE contract goal without the City of Gainesville RTS' prior written consent. Prior written consent will only be provided where there is a "good cause" for termination to make good faith

efforts to replace a DBE that is terminated or has otherwise failed to complete its work on a contract with another certified DBE, to the extent needed to meet the contract goal. We will require the prime contractor to notify the DBELO immediately of the DBE's inability or unwillingness to perform and provide reasonable documentation.

In this situation, we will require the prime contractor to obtain our prior approval of the substitute DBE and to provide copies of new or amended subcontracts, or documentation of good faith efforts.

If the contractor fails or refuses to comply in the time specified, our contracting office will issue an order stopping all or part of payment/work until satisfactory action has been taken. If the contractor still fails to comply, the contracting officer may issue a termination for default proceeding.

The City of Gainesville RTS will require a contractor to make good faith efforts to replace a DBE that is terminated or has otherwise failed to complete its work on a contract with another certified DBE, to the extent needed to meet the contract goal. The City of Gainesville RTS will require the prime contractor to notify the DBELO immediately of the DBE's inability or unwillingness to perform and provide reasonable documentation.

5.7.6 Sample Bid Specification:

The requirements of 49 CFR Part 26, Regulations of the U.S. Department of Transportation, apply to this contract. It is the policy of the City of Gainesville RTS to practice nondiscrimination based on race, color, sex, or national origin in the award or performance of this contract. All firms qualifying under this solicitation are encouraged to submit bids/proposals. Award of this contract will be conditioned upon satisfying the requirements of this bid specification. These requirements apply to all bidders/offerors, including those who qualify as a DBE. A DBE contract goal of 1.87% percent has been established for this contract. The bidder/offeror shall make good faith efforts, as defined in Appendix A, 49 CFR Part 26 (Attachment 5), to meet the contract goal for DBE participation in the performance of this contract.

The bidder/offeror will be required to submit the following information: (1) the names and addresses of DBE firms that will participate in the contract; (2) a description of the work that each DBE firm will perform; (3) the dollar amount of the participation of each DBE firm participating; (4) Written documentation of the bidder/offeror's commitment to use a DBE subcontractor whose participation it submits to meet the contract goal; (5) Written confirmation from the DBE that it is participating in the contract as provided in the commitment made under (4); and (5) if the contract goal is not met, evidence of good faith efforts.

5.8 Counting DBE Participation

The City of Gainesville RTS will count DBE participation toward overall and contract goals as provided in 49 CFR 26.55

SECTION 6 CERTIFICATION PROCEDURES

6.1 Unified Certification Programs

The City of Gainesville RTS is a non-certifying member of a Unified Certification Program administered by the FDOT. The UCP will meet all the requirements of this section. The City of Gainesville RTS will use and count for DBE credit only those DBE firms certified by the FDOT or local certifying UCP members, as listed in Attachment 7.

To apply for certification, you may contact the FDOT at:

Ms. Vicki Smith, Certification Mgr. EOO
605 Suwannee St. MS 65
Tallahassee, FL 32399
(850) 414-4746
victoria.smith@dot.state.fl.us

The City of Gainesville Regional System agrees that all obligations with respect to certification and non-discrimination will be carried out by the UCPs that comply with the certification and non-discrimination requirements of 49 CFR Subpart E.

The City of Gainesville Regional Transit System will utilize the unified DBE directory containing all firms certified by the UCP (including those DBEs from other States certified under the provisions of 49 CFR Part 26.31.) The UCP will maintain the directory and make it available as required by the aforementioned part.

6.2 Procedures for Certification Decisions

The City of Gainesville RTS will follow the certification processes of Subpart E of Part 26 to determine the eligibility of firms to participate as DBEs in DOT-assisted contracts. FDOT's certification process can be found the FDOT's Equal Opportunity Office website as follows;

Any firm or complainant may appeal our decision in a certification matter to DOT. Such appeals may be sent to:

U.S. Department of Transportation
Office of Civil Rights Certification Appeals Branch
1200 New Jersey Ave. SE West Building, 7th Floor
Washington, D.C. 20590

We will promptly implement any DOT certification appeal decisions affecting the eligibility of DBEs for our DOT-assisted contracting (e.g., certify a firm if DOT has determined that our denial of its application was erroneous).

SECTION 7 COMPLIANCE AND ENFORCEMENT

Information, Confidentiality, Cooperation

The City of Gainesville RTS will safeguard from disclosure to third parties information that may reasonably be regarded as confidential business information, consistent with federal, state, and local law.

Notwithstanding any contrary provisions of state or local law, we will not release personal financial information submitted in response to the personal net worth requirement to a third party (other than DOT) without the written consent of the submitter.

Monitoring Payments to DBEs

We will require prime contractors to maintain records and documents of payments to DBEs for three years following the performance of the contract. These records will be made available for inspection upon request by any authorized representative of the City of Gainesville RTS or DOT. This reporting requirement also extends to any certified DBE subcontractor.

We will perform interim audits of contract payments to DBEs. The audit will review payments to DBE subcontractors to ensure that the actual amount paid to DBE subcontractors equals or exceeds the dollar amounts stated in the schedule of DBE participation.

SECTION 8 ATTACHMENTS

[List and append; we recommend that a copy of part 26 be attached to the program so that public users to whom we send copies can have it handy]

Attachment 1	Organizational Chart
Attachment 2	DBE Directory
Attachment 3	Monitoring and Enforcement Mechanisms
Attachment 4	Overall Goal Calculation
Attachment 5	Breakout of Estimated Race-Neutral & Race-Conscious Participation

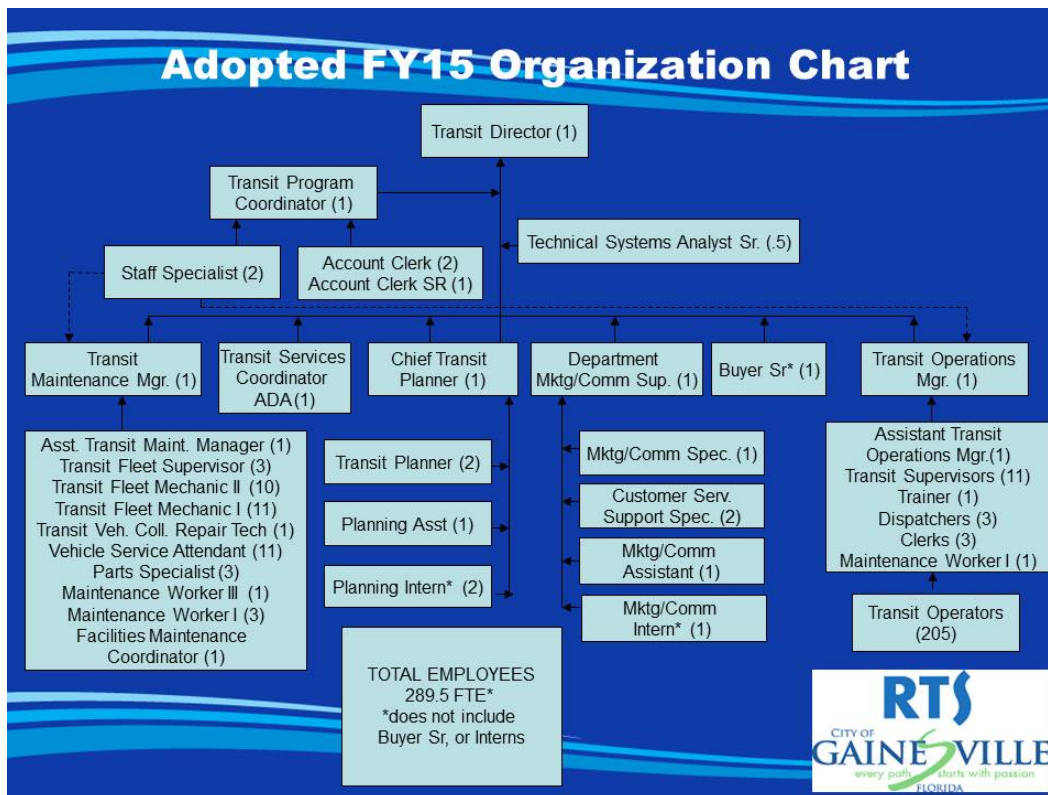
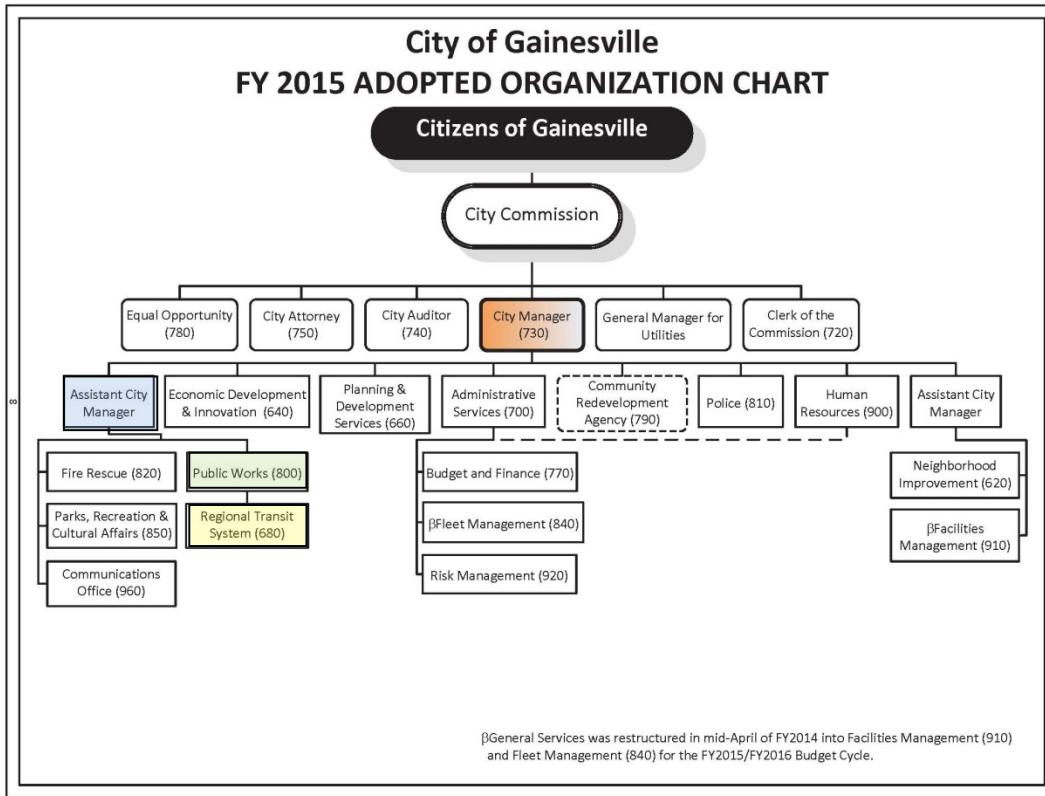
CITY OF GAINESVILLE
REGIONAL TRANSIT SYSTEM

Attachment 6
Attachment 7
Attachment 8

Forms 1, 2 and 3 for Demonstration of Good Faith Efforts
Unified Certification Program Members, prepared by FDOT
Regulations: 49 CFR part 26

CITY OF GAINESVILLE
REGIONAL TRANSIT SYSTEM

Attachment 1
Organizational Chart



Attachment 2

DBE Directory

The City of Gainesville RTS does not maintain its own DBE Directory. Instead, we access the DBE Directory that is maintained by the Florida Department of Transportation (FDOT) Equal Opportunity Office. The Directory can be accessed from FDOT's website at:

<http://www.dot.state.fl.us/equalopportunityoffice/dbeprogram1.shtm>

Alternatively, you may also conduct an internet search for "FDOT Biznet", and then click on the item reading "FDOT's Business Directory – Florida Department of Transportation"

Attachment 3
Monitoring and Enforcement Mechanisms

Monitoring and Enforcement Mechanisms

The City of Gainesville, RTS has available several remedies to enforce the DBE requirements contained in its contracts, including, but not limited to, the following:

Breach of contract action, pursuant to the terms of the contract;

In addition, the Federal government has available several enforcement mechanisms that it may apply to firms participating in the DBE problem, including, but not limited to, the following:

- Suspension or debarment proceedings pursuant to 49 CFR Part 26
- Enforcement action pursuant to 49 CFR Part 31
- Prosecution pursuant to 18 USC 1001.

Additionally, the City of Gainesville, RTS shall monitor and enforce the DBE policy utilizing the following measures:

A. The DBELO may attend the post award project meeting, i.e., preconstruction or kickoff meeting. Note: In some instances of professional services contracts, a post award meeting may not be held. At this meeting, the DBELO discusses any DBE questions and/or procedures and ascertains any corrections or adjustments in the project schedule.

B. The DBELO determines a schedule for random on-site monitoring based upon the work that the DBE subcontractor is to perform and the project schedule. This on-site monitoring verifies the work performed by those contracted DBEs, as only work performed by the DBEs counts.

C. On-site monitoring will be performed by DBELO, construction inspectors or project managers and other designated staff. Observations of the onsite visit will be documented on a monitoring checklist form. The form is to be completed, signed and dated by the staff person conducting the site visit.

Violations and Penalties Enforcement

Penalties for Non-Compliance

A contractor or DBE who fails to comply with any portion of this section of the policy, and whose failure to comply continues for a period of 30 calendar days after the contractor or DBE receives written notice of such non-compliance from the DBELO, shall be subject to any or all of the following penalties:

A. Withholding of all future payments under the eligible project until it is determined that the contractor is in compliance with the DBE policy.

- B. Cancellation of the eligible project.
- C. Refusal of participation on all future contracts or subcontracts with the City for a minimum of one year and a maximum of five years from the date upon which this penalty is imposed.
- D. The DBELO may require such reports, information and documentation from bidders, contractors, DBEs, user departments and the head of any department or office of the City reasonably necessary to determine compliance with the requirements of this chapter.
- E. Criminal sanction for fraud.

If the DBELO determines that evidence is available indicating that fraud or other unlawful activity has been committed:

- A. By a DBE certification applicant;
- B. By a certified DBE or majority prime contractor falsely reporting the utilization of DBE subcontractors; or
- C. By an individual or firm attempting to benefit from or participate in the DBE program, through fronting activity, false representation of a commercially useful function, or other fraudulent or unlawful activity.

The matter shall be referred to the appropriate legal authorities for prosecution. In the event a conviction or guilty plea is obtained stemming from such criminal prosecution, the business entity and principals shall be barred from participation in City contracts for a minimum of one year and a maximum of five years to be determined by the City Purchasing Department.

Alleged violations of the DBE Program shall be addressed as set forth in this Section.

Potential violations during bid or proposal process

Bidders and Proposers that submit bids or proposal on a Contract or Proposal shall not:

- A. Make any false statements or material misrepresentations regarding any matter relevant to the DBE Program; or
- B. Fail to comply with the goal and Good Faith Effort obligations set forth in the DBE Program; or
- C. List an DBE intended to serve as a **Conduit** to satisfy an DBE participation goal; or
- D. Commit any other violations of the DBE Program, or rules and guidelines promulgated there under.

Potential violations during contract performance

A Contractor that has been awarded a Contract based upon a stated level of DBE participation shall not, at any time before or during the performance of such Contract:

- A. Make any false statements or material misrepresentations regarding any matter relevant to the DBE Program; or
- B. Fail to in fact utilize a DBE that was originally listed at bid opening or proposal submission in order to satisfy Contract goals, unless the Proposer or Bidder:

1. Substitutes another DBE performing the same commercially useful function at the same dollar amount with prior approval of the DBELO, or
2. Fails to allow a DBE functioning as a subcontractor, joint venture, supplier, or manufacturer, to perform the commercially useful function, the value of which was originally counted for that DBE in awarding the contract, unless the bidder or proposer shows that the DBE failed to perform in a reasonably satisfactory manner; or
3. Modifies or eliminates all or a portion of the scope of work attributable to a DBE upon which the contract was awarded, unless directed by the City; or
4. Terminates a DBE originally utilized as a subcontractor, joint venture, supplier or manufacturer in order to be awarded the contract without replacing such DBE with prior approval, with another DBE performing the same commercially useful function and dollar amount, or
5. Participates in a conduit relationship with a DBE scheduled to perform work on the contract; or
6. Commits any other violations of the DBE Program, or rules and guidelines promulgated thereunder.

Investigation of Violations and Unfair Practices

DBEs shall report any alleged DBE Program violations or unfair practices involving the DBE Program within three (3) business days after the DBE first became aware of the act or omission in question. The DBELO may reject as untimely any report submitted after such date.

The DBELO shall not accept reports of violations or unfair practices that are submitted more than thirty (30) calendar days after the DBE first became aware of the act or omission in question.

A. The DBELO is empowered to receive and investigate complaints and allegations by DBEs, third parties and/or City personnel, and/or to initiate its own investigations regarding compliance with the requirements and obligations of the DBE Program and the rules and guidelines promulgated there under. In the event the DBELO determines in its sole discretion that an investigation is warranted, the DBELO shall notify the party being investigated. Upon written notice of such investigation, the affected party shall be obligated to cooperate fully with the investigation and shall have a continuing burden of providing complete, truthful information to the DBELO and of otherwise proving compliance with the requirements and obligations of the DBE Program.

B. A violation of the DBE Program in the bid or proposal phase of a Contract shall be grounds for disqualifying such Bidder or Proposer from further consideration for Contract award. If the violation involves bad faith or dishonesty or may otherwise be indicative of the Bidder's or Proposer's qualification to perform certain future Contracts, the City may consider such violation in awarding such future Contracts.

C. A violation of the DBE Program by a Contractor shall constitute a material breach of the Contract, and shall entitle the City to:

- 1) Exercise all rights and remedies that it may have at law or at equity for material breach of the Contract
- 2) Exercise all rights and remedies that it may have under the Contract, including but not limited to termination of the Contract and any other rights set forth in Section below; and
- 3) Any other rights or remedies set forth under this policy.

The remedies set forth herein shall be deemed cumulative and not exclusive and may be exercised successively or concurrently, in addition to any other available remedy.

Remedies for Violation of DBE Program

The parties further agree that in addition to any other remedies the City may have at law under an agreement for material breach, the City shall be entitled to exercise any one or more of the following remedies if the Contractor violates the DBE Program:

- A. Terminate contract for default;
- B. Suspend contract for default;
- C. Withhold all payments due to the Contractor under the contract until such violation has been fully cured or the City and the Contractor have reached a mutually agreeable resolution;
- D. Assess liquidated damages as provided in the contract.
- E. Offset any liquidated damages and / or any amounts necessary to cure any violation of the DBE Program from any retainage being held by the City on the Contract, or from any other amounts due to the Contractor under the Contract.

The remedies set forth herein shall be deemed cumulative and not exclusive and may be exercised successively or concurrently, in addition to any other available remedy.

Liquidated Damages

The City and the Contractor acknowledge and agree that the City will incur costs if the Contractor violates the DBE Program in one or more of the ways set forth below. The parties further acknowledge and agree that the City will incur damages as a result of such failure, but that the costs the City might reasonably be anticipated to accrue as a result of such failures are difficult to ascertain due to their indefiniteness and uncertainty. Accordingly, the Contractor agrees to pay the City liquidated damages at the rates set forth below for each specified violation of the DBE Program. The Contractor further agrees that for each specified violation the agreed upon liquidated damages are reasonably proximate to the loss the City will incur as a result of such violation:

- A. Failing to utilize a DBE that was originally listed at bid opening or proposal submission in order to satisfy Contract goals, or failing to allow such DBE to perform a Commercially Useful Function, in violation of Sections of the DBE Program: 100% of the amount originally counted for the DBE at bid opening or proposal submission;
- B. Modifying or eliminating all or a portion of the scope of work attributable to a DBE upon which the Contract was awarded, in violation of the DBE Program: 100% of the amount of work modified or eliminated;
- C. Terminating a DBE originally listed/utilized as a Subcontractor, Joint Venturer, Supplier, or Manufacturer in order to be awarded the Contract without obtaining prior approval for replacing such DBE with another DBE performing the same Commercially Useful Function and dollar amount: 100% of the amount originally counted for the DBE at bid opening or proposal submission;
- D. Participating in a Conduit relationship with a DBE scheduled to perform work: 100% of the amount counted for the DBE at bid opening or proposal submission;
- E. Failing to provide any documentation or written submissions required under the DBE Program within the time period set forth therein: \$50 per day for each day that such documentation or written submission is overdue.

Attachment 4
Section 26.45: Overall Goal Calculation

Amount of Goal

1. The City of Gainesville RTS's overall goal for the following time period 2013-2016 is the following: _____% of the Federal financial assistance we will expend in DOT-assisted contracts, *exclusive of FTA funds to be used for the purchase of transit vehicles.*
2. _____ is the dollar amount of DOT-assisted contracts that is expected to be awarded during FY2016. This means that City of Gainesville RTS has set a goal of expending _____ with DBEs during this fiscal year/project.

Methodology used to Calculate Overall Goal

Step 1: 26.45(c)

Determine the base figure for the relative availability of DBEs.

The base figure for the relative availability of DBE's was calculated as follows:

$$\text{Base figure} = \frac{\text{Ready, willing, and able DBEs}}{\text{All firms ready, willing and able}}$$

The data source or demonstrable evidence used to derive the numerator was: **DBE Directory**

The data source or demonstrable evidence used to derive the denominator was: **U.S. Census Data, County Business Patterns**

When we divided the numerator by the denominator we arrived at the base figure for our overall goal and that number was _____.

Step 2: 26.45(d)

After calculating a base figure of the relative availability of DBEs, evidence was examined to determine what adjustment was needed to the base figure in order to arrive at the overall goal.

In order to reflect as accurately as possible the DBE participation we would expect in the absence of discrimination we have adjusted our base figure by _____%.

The data used to determine the adjustment to the base figure was: **Median Past Participation**

The reason we chose to adjust our figure using this data was because: **Nature of contracts to be let in fiscal year, median past participation and extent to which previous measures helped to achieve overall goal.**

From this data, we have adjusted our base figure to: _____%

Public Participation

We published our goal information in these publications:

- The Gainesville Sun - local circulation newspaper
- American Public Transportation Association – Passenger Transport - Trade journal

We received comments from these individuals or organizations:

Summaries of these comments are as follows:

CITY OF GAINESVILLE
REGIONAL TRANSIT SYSTEM

Our responses to these comments are:

Attachment 5

Section 26.51: Breakout of Estimated Race-Neutral & Race Conscious Participation

The City of Gainesville RTS will meet the maximum feasible portion of its overall goal by using race-neutral means of facilitating DBE participation. The City of Gainesville RTS uses the following race-neutral means to increase DBE participation:

- (1) Arranging solicitations, times for the presentation of bids, quantities, specifications, and delivery schedules in ways that facilitate participation by DBEs and other small businesses and by making contracts more accessible to small businesses, by means such as those provided under § 26.39 of this part.
- (2) Providing technical assistance and other services;
- (3) Carrying out information and communications programs on contracting procedures and specific contract opportunities (e.g., ensuring the inclusion of DBEs, and other small businesses, on recipient mailing lists for bidders; ensuring the dissemination to bidders on prime contracts of lists of potential subcontractors; provision of information in languages other than English, where appropriate);
- (4) Providing services to help DBEs, and other small businesses, improve long-term development, increase opportunities to participate in a variety of kinds of work, handle increasingly significant projects, and achieve eventual self-sufficiency;

We estimate that, in meeting our overall goal of 1.87%, we will obtain 1.0% from race-neutral participation and .87% through race-conscious measures.

The following is a summary of the basis of our estimated breakout of race-neutral and race-conscious DBE participation: Median past participation on contracts as the prime contractor

In order to ensure that our DBE program will be narrowly tailored to overcome the effects of discrimination, if we use contract goals we will adjust the estimated breakout of race-neutral and race-conscious participation as needed to reflect actual DBE participation (see 26.51(f)) and we will track and report race-neutral and race conscious participation separately. For reporting purposes, race-neutral DBE participation includes, but is not necessarily limited to, the following: DBE participation through a prime contract a DBE obtains through customary competitive procurement procedures; DBE participation through a subcontract on a prime contract that does not carry DBE goal; DBE participation on a prime contract exceeding a contract goal; and DBE participation through a subcontract from a prime contractor that did not consider a firm's DBE status in making the award.

We will maintain data separately on DBE achievements in those contracts with and without contract goals, respectively.

Attachment 6

Forms 1 & 2 for Demonstration of Good Faith Efforts

FORM 1: DISADVANTAGED BUSINESS ENTERPRISE (DBE) UTILIZATION

The undersigned bidder/offeror has satisfied the requirements of the bid specification in the following manner (please check the appropriate space):

_____ The bidder/offeror is committed to a minimum of _____ % DBE utilization on this contract.

_____ The bidder/offeror (if unable to meet the DBE goal of _____%) is committed to a minimum of _____% DBE utilization on this contract a submits documentation demonstrating good faith efforts.

Name of bidder/offeror's firm: _____

State Registration No. _____

By _____
(Signature) Title

FORM 2: Subcontractor/Subconsultant List and Bidder Status

**SUBCONTRACTOR/SUBCONSULTANT LIST
and
BIDDER STATUS**

The Bidder/Proposer shall provide information on ALL prospective subcontractor(s)/subconsultant(s) who submit bids/quotations in support of this solicitation. Use additional sheets as necessary.

IDENTIFY EVERY SUBCONTRACTOR(S)/SUBCONSULTANT(S)	SCOPE OF WORK TO BE PERFORMED	CERTIFIED D/M/WBE FIRM? (Check all that apply)	PERVIOUS YEAR'S ANNUAL GROSS RECEIPT'S	UTILIZING ON THIS PROJECT
NAME: _____ ADDRESS: _____ _____ PHONE: _____ FAX: _____ CONTACT PERSON: _____ _____	SCOPE OF WORK: _____ _____ _____ AGE OF FIRM: _____	YES _____ NO: _____ IF YES, DBE _____ OR MBE _____ OR WBE _____	_____ Less than \$500K _____ \$500K-\$2 mil _____ \$2 mil - \$5 mil _____ more than \$5 mil.	YES or NO
NAME: _____ ADDRESS: _____ _____ PHONE: _____ FAX: _____ CONTACT PERSON: _____ _____	SCOPE OF WORK: _____ _____ _____ AGE OF FIRM: _____	YES _____ NO _____ IF YES, DBE _____ OR MBE _____ OR WBE _____	_____ Less than \$500K _____ \$500K-\$2 mil _____ \$2 mil - \$5 mil _____ more than \$5 mil.	YES or NO
NAME: _____ ADDRESS: _____ _____ PHONE: _____ FAX: _____ CONTACT PERSON: _____ _____	SCOPE OF WORK: _____ _____ _____ AGE OF FIRM: _____	YES _____ NO _____ IF YES, DBE _____ OR MBE _____ OR WBE _____	_____ Less than \$500K _____ \$500K-\$2 mil _____ \$2 mil - \$5 mil _____ more than \$5 mil.	YES Or NO

Check here if use of subcontractor(s)/subconsultant(s) is/are not applicable for this project:

Name of Bidder/Proposer: _____

Name/Title of person completing this form: _____

Is Bidder/Proposer a DBE? ___ Yes ___ No If No, is Bidder/Proposer a M/WBE? ___ Yes ___ No

Signature: _____ Date: _____

THIS FORM MUST BE COMPLETED, SIGNED AND RETURNED WITH YOUR BID RESPONSE.

CITY OF GAINESVILLE
REGIONAL TRANSIT SYSTEM

Form 3: Tabulation of Subcontractors and Material Suppliers

EXHIBIT
Revised: 4/4/2005

TABULATION OF SUBCONTRACTORS AND MATERIAL SUPPLIERS

The Undersigned states that the following is a complete list of the proposed Subcontractors and Material Suppliers on this Project and the class of work to be performed by each, and that such list will not be added to nor altered without written consent of the City of Gainesville. **Completion and submission of this form with the bid is mandatory for the bid to be considered responsive.**

Please TYPE or PRINT legibly. Use additional sheets as necessary.

SUBCONTRACTORS

Company Name	Company Phone Number	Class of Work	% or Price of Work	Disadvantaged Business Entity
1.				<input type="checkbox"/> Yes <input type="checkbox"/> No
2.				<input type="checkbox"/> Yes <input type="checkbox"/> No
3.				<input type="checkbox"/> Yes <input type="checkbox"/> No
4.				<input type="checkbox"/> Yes <input type="checkbox"/> No
5.				<input type="checkbox"/> Yes <input type="checkbox"/> No

MATERIALS SUPPLIERS

Company Name	Company Phone Number	Type of Supply/Material	% or Price of Materials	Disadvantaged Business Entity
1.				<input type="checkbox"/> Yes <input type="checkbox"/> No
2.				<input type="checkbox"/> Yes <input type="checkbox"/> No
3.				<input type="checkbox"/> Yes <input type="checkbox"/> No
4.				<input type="checkbox"/> Yes <input type="checkbox"/> No
5.				<input type="checkbox"/> Yes <input type="checkbox"/> No

Bidding Company Name: _____ Form Completed By: _____

Date: _____ Title: _____

**COMPLETE, SIGN AND RETURN THIS FORM WITH YOUR RESPONSE OR YOUR BID WILL BE CONSIDERED
NON-RESPONSIVE.**

Attachment 7

Unified Certification Program Members, prepared by FDOT

Current directory available at:

<http://www3b.dot.state.fl.us/EqualOpportunityOfficeBusinessDirectory/CustomSearch.aspx>

Attachment 8

Regulations: 49 CFR Part 26

Title 49: Transportation

PART 26—PARTICIPATION BY DISADVANTAGED BUSINESS ENTERPRISES IN DEPARTMENT OF TRANSPORTATION FINANCIAL ASSISTANCE PROGRAMS

Contents

Subpart A—General

- § 26.1 What are the objectives of this part?
- § 26.3 To whom does this part apply?
- § 26.5 What do the terms used in this part mean?
- § 26.7 What discriminatory actions are forbidden?
- § 26.9 How does the Department issue guidance and interpretations under this part?
- § 26.11 What records do recipients keep and report?
- § 26.13 What assurances must recipients and contractors make?
- § 26.15 How can recipients apply for exemptions or waivers?

Subpart B—Administrative Requirements for DBE Programs for Federally-Assisted Contracting

- § 26.21 Who must have a DBE program?
- § 26.23 What is the requirement for a policy statement?
- § 26.25 What is the requirement for a liaison officer?
- § 26.27 What efforts must recipients make concerning DBE financial institutions?
- § 26.29 What prompt payment mechanisms must recipients have?
- § 26.31 What information must you include in your DBE directory?
- § 26.33 What steps must a recipient take to address overconcentration of DBEs in certain types of work?
- § 26.35 What role do business development and mentor-protégé programs have in the DBE program?
- § 26.37 What are a recipient's responsibilities for monitoring the performance of other program participants?
- § 26.39 Fostering small business participation.

Subpart C—Goals, Good Faith Efforts, and Counting

- § 26.41 What is the role of the statutory 10 percent goal in this program?
- § 26.43 Can recipients use set-asides or quotas as part of this program?
- § 26.45 How do recipients set overall goals?
- § 26.47 Can recipients be penalized for failing to meet overall goals?
- § 26.49 How are overall goals established for transit vehicle manufacturers?
- § 26.51 What means do recipients use to meet overall goals?
- § 26.53 What are the good faith efforts procedures recipients follow in situations where there are contract goals?
- § 26.55 How is DBE participation counted toward goals?

Subpart D—Certification Standards

- § 26.61 How are burdens of proof allocated in the certification process?
- § 26.63 What rules govern group membership determinations?
- § 26.65 What rules govern business size determinations?
- § 26.67 What rules determine social and economic disadvantage?
- § 26.69 What rules govern determinations of ownership?
- § 26.71 What rules govern determinations concerning control? § 26.73 What are other rules affecting certification?

Subpart E—Certification Procedures

- § 26.81 What are the requirements for Unified Certification Programs?
- § 26.83 What procedures do recipients follow in making certification decisions?
- § 26.85 Interstate certification.
- § 26.86 What rules govern recipients' denials of initial requests for certification?
- § 26.87 What procedures does a recipient use to remove a DBE's eligibility?
- § 26.89 What is the process for certification appeals to the Department of Transportation?
- § 26.91 What actions do recipients take following DOT certification appeal decisions?

Subpart F—Compliance and Enforcement

- § 26.101 What compliance procedures apply to recipients?
 - § 26.103 What enforcement actions apply in FHWA and FTA programs?
 - § 26.105 What enforcement actions apply in FAA programs?
 - § 26.107 What enforcement actions apply to firms participating in the DBE program?
 - § 26.109 What are the rules governing information, confidentiality, cooperation, and intimidation or retaliation?
- Appendix A to Part 26—Guidance Concerning Good Faith Efforts

Appendix B to Part 26—Uniform Report of DBE Awards or Commitments and Payments Form
Appendix C to Part 26—DBE Business Development Program Guidelines
Appendix D to Part 26—Mentor-Protégé Program Guidelines
Appendix E to Part 26—Individual Determinations of Social and Economic Disadvantage
Appendix F to Part 26—Uniform Certification Application Form

AUTHORITY: 23 U.S.C. 304 and 324; 42 U.S.C. 2000d, *et seq.* ; 49 U.S.C. 47107, 47113, 47123; Sec. 1101(b), Pub. L. 105-178, 112 Stat. 107, 113.

SOURCE: 64 FR 5126, Feb. 2, 1999, unless otherwise noted.

Subpart A—General

§ 26.1 What are the objectives of this part?

This part seeks to achieve several objectives:

- (a) To ensure nondiscrimination in the award and administration of DOT-assisted contracts in the Department's highway, transit, and airport financial assistance programs;
- (b) To create a level playing field on which DBEs can compete fairly for DOT-assisted contracts;
- (c) To ensure that the Department's DBE program is narrowly tailored in accordance with applicable law;
- (d) To ensure that only firms that fully meet this part's eligibility standards are permitted to participate as DBEs;
- (e) To help remove barriers to the participation of DBEs in DOT-assisted contracts;
- (f) To assist the development of firms that can compete successfully in the marketplace outside the DBE program; and
- (g) To provide appropriate flexibility to recipients of Federal financial assistance in establishing and providing opportunities for DBEs.

§ 26.3 To whom does this part apply?

(a) If you are a recipient of any of the following types of funds, this part applies to you:

- (1) Federal-aid highway funds authorized under Titles I (other than Part B) and V of the Intermodal Surface Transportation Efficiency Act of 1991 (ISTEA), Pub. L. 102-240, 105 Stat. 1914, or Titles I, III, and V of the Transportation Equity Act for the 21st Century (TEA-21), Pub. L. 105-178, 112 Stat. 107.
- (2) Federal transit funds authorized by Titles I, III, V and VI of ISTEA, Pub. L. 102-240 or by Federal transit laws in Title 49, U.S. Code, or Titles I, III, and V of the TEA-21, Pub. L. 105-178.
- (3) Airport funds authorized by 49 U.S.C. 47101, *et seq.*

(b) [Reserved]

(c) If you are letting a contract, and that contract is to be performed entirely outside the United States, its territories and possessions, Puerto Rico, Guam, or the Northern Marianas Islands, this part does not apply to the contract.

(d) If you are letting a contract in which DOT financial assistance does not participate, this part does not apply to the contract.

§ 26.5 What do the terms used in this part mean?

Affiliation has the same meaning the term has in the Small Business Administration (SBA) regulations, 13 CFR part 121.

(1) Except as otherwise provided in 13 CFR part 121, concerns are affiliates of each other when, either directly or indirectly:

(i) One concern controls or has the power to control the other; or

(ii) A third party or parties controls or has the power to control both; or

(iii) An identity of interest between or among parties exists such that affiliation may be found.

(2) In determining whether affiliation exists, it is necessary to consider all appropriate factors, including common ownership, common management, and contractual relationships. Affiliates must be considered together in determining whether a concern meets small business size criteria and the statutory cap on the participation of firms in the DBE program.

Alaska Native means a citizen of the United States who is a person of one-fourth degree or more Alaskan Indian (including Tsimshian Indians not enrolled in the Metlaktla Indian Community), Eskimo, or Aleut blood, or a combination of those bloodlines. The term includes, in the absence of proof of a minimum blood quantum, any citizen whom a Native village or Native group regards as an Alaska Native if their father or mother is regarded as an Alaska Native.

Alaska Native Corporation (ANC) means any Regional Corporation, Village Corporation, Urban Corporation, or Group Corporation organized under the laws of the State of Alaska in accordance with the Alaska Native Claims Settlement Act, as amended (43 U.S.C. 1601, *et seq.*).

Compliance means that a recipient has correctly implemented the requirements of this part.

Contract means a legally binding relationship obligating a seller to furnish supplies or services (including, but not limited to, construction and professional services) and the buyer to pay for them. For purposes of this part, a lease is considered to be a contract.

Contractor means one who participates, through a contract or subcontract (at any tier), in a DOT-assisted highway, transit, or airport program.

Department or DOT means the U.S. Department of Transportation, including the Office of the Secretary, the Federal Highway Administration (FHWA), the Federal Transit Administration (FTA), and the Federal Aviation Administration (FAA).

Disadvantaged business enterprise or DBE means a for-profit small business concern—

(1) That is at least 51 percent owned by one or more individuals who are both socially and economically disadvantaged or, in the case of a corporation, in which 51 percent of the stock is owned by one or more such individuals; and

(2) Whose management and daily business operations are controlled by one or more of the socially and economically disadvantaged individuals who own it.

DOT-assisted contract means any contract between a recipient and a contractor (at any tier) funded in whole or in part with DOT financial assistance, including letters of credit or loan guarantees, except a contract solely for the purchase of land.

DOT/SBA Memorandum of Understanding or MOU, refers to the agreement signed on November 23, 1999, between the Department of Transportation (DOT) and the Small Business Administration (SBA) streamlining certification procedures for participation in SBA's 8(a) Business Development (8(a) BD) and Small Disadvantaged Business (SDB) programs, and DOT's Disadvantaged Business Enterprise (DBE) program for small and disadvantaged businesses.

Good faith efforts means efforts to achieve a DBE goal or other requirement of this part which, by their scope, intensity, and appropriateness to the objective, can reasonably be expected to fulfill the program requirement.

Home state means the state in which a DBE firm or applicant for DBE certification maintains its principal place of business.

Immediate family member means father, mother, husband, wife, son, daughter, brother, sister, grandmother, grandfather, grandson, granddaughter, mother-in-law, or father-in-law.

Indian tribe means any Indian tribe, band, nation, or other organized group or community of Indians, including any ANC, which is recognized as eligible for the special programs and services provided by the United States to Indians because of their status as Indians, or is recognized as such by the State in which the tribe, band, nation, group, or community resides. See definition of "tribally-owned concern" in this section.

Joint venture means an association of a DBE firm and one or more other firms to carry out a single, for-profit business enterprise, for which the parties combine their property, capital, efforts, skills and knowledge, and in which the DBE is responsible for a distinct, clearly defined portion of the work of the contract and whose share in the capital contribution, control, management, risks, and profits of the joint venture are commensurate with its ownership interest.

Native Hawaiian means any individual whose ancestors were natives, prior to 1778, of the area which now comprises the State of Hawaii.

Native Hawaiian Organization means any community service organization serving Native Hawaiians in the State of Hawaii which is a not-for-profit organization chartered by the State of Hawaii, is controlled by Native Hawaiians, and whose business activities will principally benefit such Native Hawaiians.

Noncompliance means that a recipient has not correctly implemented the requirements of this part.

Operating Administration or OA means any of the following parts of DOT: the Federal Aviation Administration (FAA), Federal Highway Administration (FHWA), and Federal Transit Administration (FTA). The "Administrator" of an operating administration includes his or her designees.

Personal net worth means the net value of the assets of an individual remaining after total liabilities are deducted. An individual's personal net worth does not include: The individual's ownership interest in an applicant or participating DBE firm; or the individual's equity in his or her primary place of residence. An individual's personal net worth includes only his or her own share of assets held jointly or as community property with the individual's spouse.

Primary industry classification means the North American Industrial Classification System (NAICS) designation which best describes the primary business of a firm. The NAICS is described in the *North American Industry Classification Manual—United States, 1997* which is available from the National Technical Information Service, 5285 Port Royal Road, Springfield, VA, 22161; by calling 1 (800) 553-6847; or via the Internet at: <http://www.ntis.gov/product/naics.htm>.

Primary recipient means a recipient which receives DOT financial assistance and passes some or all of it on to another recipient.

Principal place of business means the business location where the individuals who manage the firm's day-to-day operations spend most working hours and where top management's business records are kept. If the offices from which management is directed and where business records are kept are in different locations, the recipient will determine the principal place of business for DBE program purposes.

Program means any undertaking on a recipient's part to use DOT financial assistance, authorized by the laws to which this part applies.

Race-conscious measure or program is one that is focused specifically on assisting only DBEs, including women-owned DBEs.

Race-neutral measure or program is one that is, or can be, used to assist all small businesses. For the purposes of this part, *race-neutral* includes gender-neutrality.

Recipient is any entity, public or private, to which DOT financial assistance is extended, whether directly or through another recipient, through the programs of the FAA, FHWA, or FTA, or who has applied for such assistance.

Secretary means the Secretary of Transportation or his/her designee.

Set-aside means a contracting practice restricting eligibility for the competitive award of a contract solely to DBE firms.

Small Business Administration or *SBA* means the United States Small Business Administration.

SBA certified firm refers to firms that have a current, valid certification from or recognized by the SBA under the 8(a) BD or SDB programs.

Small business concern means, with respect to firms seeking to participate as DBEs in DOT-assisted contracts, a small business concern as defined pursuant to section 3 of the Small Business Act and Small Business Administration regulations implementing it (13 CFR part 121) that also does not exceed the cap on average annual gross receipts specified in § 26.65(b).

Socially and economically disadvantaged individual means any individual who is a citizen (or lawfully admitted permanent resident) of the United States and who is—

(1) Any individual who a recipient finds to be a socially and economically disadvantaged individual on a case-by-case basis.

(2) Any individual in the following groups, members of which are rebuttably presumed to be socially and economically disadvantaged:

(i) "Black Americans," which includes persons having origins in any of the Black racial groups of Africa;

(ii) "Hispanic Americans," which includes persons of Mexican, Puerto Rican, Cuban, Dominican, Central or South American, or other Spanish or Portuguese culture or origin, regardless of race;

(iii) "Native Americans," which includes persons who are American Indians, Eskimos, Aleuts, or Native Hawaiians;

(iv) "Asian-Pacific Americans," which includes persons whose origins are from Japan, China, Taiwan, Korea, Burma (Myanmar), Vietnam, Laos, Cambodia (Kampuchea), Thailand, Malaysia, Indonesia, the Philippines, Brunei, Samoa, Guam, the U.S. Trust Territories of the Pacific Islands (Republic of Palau), the Commonwealth of the Northern Marianas Islands, Macao, Fiji, Tonga, Kiribati, Juvalu, Nauru, Federated States of Micronesia, or Hong Kong;

(v) "Subcontinent Asian Americans," which includes persons whose origins are from India, Pakistan, Bangladesh, Bhutan, the Maldives Islands, Nepal or Sri Lanka; (vi) Women;

(vii) Any additional groups whose members are designated as socially and economically disadvantaged by the SBA, at such time as the SBA designation becomes effective.

Tribally-owned concern means any concern at least 51 percent owned by an Indian tribe as defined in this section.

You refers to a recipient, unless a statement in the text of this part or the context requires otherwise (i.e., 'You must do XYZ' means that recipients must do XYZ).

[64 FR 5126, Feb. 2, 1999, as amended at 64 FR 34570, June 28, 1999; 68 FR 35553, June 16, 2003; 76 FR 5096, Jan. 28, 2011]

§ 26.7 What discriminatory actions are forbidden?

(a) You must never exclude any person from participation in, deny any person the benefits of, or otherwise discriminate against anyone in connection with the award and performance of any contract covered by this part on the basis of race, color, sex, or national origin.

(b) In administering your DBE program, you must not, directly or through contractual or other arrangements, use criteria or methods of administration that have the effect of defeating or substantially impairing accomplishment of the objectives of the program with respect to individuals of a particular race, color, sex, or national origin.

§ 26.9 How does the Department issue guidance and interpretations under this part?

(a) Only guidance and interpretations (including interpretations set forth in certification appeal decisions) consistent with this part 26 and issued after March 4, 1999 express the official positions and views of the Department of Transportation or any of its operating administrations.

(b) The Secretary of Transportation, Office of the Secretary of Transportation, FHWA, FTA, and FAA may issue written interpretations of or written guidance concerning this part. Written interpretations and guidance are valid, and express the official positions and views of the Department of Transportation or any of its operating administrations, only if they are issued over the signature of the Secretary of Transportation or if they contain the following statement: The General Counsel of the Department of Transportation has reviewed this document and approved it as consistent with the language and intent of 49 CFR part 26.
[72 FR 15617, Apr. 2, 2007]

§ 26.11 What records do recipients keep and report?

(a) You must transmit the Uniform Report of DBE Awards or Commitments and Payments, found in Appendix B to this part, at the intervals stated on the form.

(b) You must continue to provide data about your DBE program to the Department as directed by DOT operating administrations

(c) You must create and maintain a bidders list.

(1) The purpose of this list is to provide you as accurate data as possible about the universe of DBE and non-DBE contractors and subcontractors who seek to work on your Federally-assisted contracts for use in helping you set your overall goals.

(2) You must obtain the following information about DBE and non-DBE contractors and subcontractors who seek to work on your Federally-assisted contracts:

(i) Firm name;

(ii) Firm address;

(iii) Firm's status as a DBE or non-DBE;

(iv) Age of the firm; and

(v) The annual gross receipts of the firm. You may obtain this information by asking each firm to indicate into what gross receipts bracket they fit (*e.g.*, less than \$500,000; \$500,000-\$1 million; \$1-2 million; \$2-5 million; etc.) rather than requesting an exact figure from the firm.

(3) You may acquire the information for your bidders list in a variety of ways. For example, you can collect the data from all bidders, before or after the bid due date. You can conduct a survey that will result in statistically sound estimate of the universe of DBE and non-DBE contractors and subcontractors who seek to work on your Federally-assisted contracts. You may combine different data collection approaches (*e.g.*, collect name and address information from all bidders, while conducting a survey with respect to age and gross receipts information).

[64 FR 5126, Feb. 2, 1999, as amended at 65 FR 68951, Nov. 15, 2000; 76 FR 5096, Jan. 28, 2011]

§ 26.13 What assurances must recipients and contractors make?

(a) Each financial assistance agreement you sign with a DOT operating administration (or a primary recipient) must include the following assurance:

The recipient shall not discriminate on the basis of race, color, national origin, or sex in the award and performance of any DOT-assisted contract or in the administration of its DBE program or the requirements of 49 CFR part 26. The recipient shall take all necessary and reasonable steps under 49 CFR part 26 to ensure nondiscrimination in the award and administration of DOT-assisted contracts. The recipient's DBE program, as required by 49 CFR part 26 and as approved by DOT, is incorporated by reference in this agreement. Implementation of this program is a legal obligation and failure to carry out its terms shall be treated as a violation of this agreement. Upon notification to the recipient of its failure to carry out its approved program, the Department may impose sanctions as provided for under part 26 and may, in appropriate cases, refer the matter for enforcement under 18 U.S.C. 1001 and/or the Program Fraud Civil Remedies Act of 1986 (31 U.S.C. 3801 *et seq.*).

(b) Each contract you sign with a contractor (and each subcontract the prime contractor signs with a subcontractor) must include the following assurance:

The contractor, sub recipient or subcontractor shall not discriminate on the basis of race, color, national origin, or sex in the performance of this contract. The contractor shall carry out applicable requirements of 49 CFR part 26 in the award and administration of DOT-assisted contracts. Failure by the contractor to carry out these requirements is a material breach of this contract, which may result in the termination of this contract or such other remedy as the recipient deems appropriate.

§ 26.15 How can recipients apply for exemptions or waivers?

(a) You can apply for an exemption from any provision of this part. To apply, you must request the exemption in writing from the Office of the Secretary of Transportation, FHWA, FTA, or FAA. The Secretary will grant the request only if it documents special or exceptional circumstances, not likely to be generally applicable, and not contemplated in connection with the rulemaking that

established this part, that make your compliance with a specific provision of this part impractical. You must agree to take any steps that the Department specifies to comply with the intent of the provision from which an exemption is granted. The Secretary will issue a written response to all exemption requests.

(b) You can apply for a waiver of any provision of Subpart B or C of this part including, but not limited to, any provisions regarding administrative requirements, overall goals, contract goals or good faith efforts. Program waivers are for the purpose of authorizing you to operate a DBE program that achieves the objectives of this part by means that may differ from one or more of the requirements of Subpart B or C of this part. To receive a program waiver, you must follow these procedures:

(1) You must apply through the concerned operating administration. The application must include a specific program proposal and address how you will meet the criteria of paragraph (b)(2) of this section. Before submitting your application, you must have had public participation in developing your proposal, including consultation with the DBE community and at least one public hearing. Your application must include a summary of the public participation process and the information gathered through it.

(2) Your application must show that—

(i) There is a reasonable basis to conclude that you could achieve a level of DBE participation consistent with the objectives of this part using different or innovative means other than those that are provided in subpart B or C of this part;

(ii) Conditions in your jurisdiction are appropriate for implementing the proposal;

(iii) Your proposal would prevent discrimination against any individual or group in access to contracting opportunities or other benefits of the program; and

(iv) Your proposal is consistent with applicable law and program requirements of the concerned operating administration's financial assistance program.

(3) The Secretary has the authority to approve your application. If the Secretary grants your application, you may administer your DBE program as provided in your proposal, subject to the following conditions:

(i) DBE eligibility is determined as provided in subparts D and E of this part, and DBE participation is counted as provided in § 26.49;

(ii) Your level of DBE participation continues to be consistent with the objectives of this part; (iii) There is a reasonable limitation on the duration of your modified program; and

(iv) Any other conditions the Secretary makes on the grant of the waiver.

(4) The Secretary may end a program waiver at any time and require you to comply with this part's provisions. The Secretary may also extend the waiver, if he or she determines that all requirements of paragraphs (b)(2) and (3) of this section continue to be met. Any such extension shall be for no longer than period originally set for the duration of the program.

Subpart B—Administrative Requirements for DBE Programs for Federally-Assisted Contracting

§ 26.21 Who must have a DBE program?

(a) If you are in one of these categories and let DOT-assisted contracts, you must have a DBE program meeting the requirements of this part:

- (1) All FHWA recipients receiving funds authorized by a statute to which this part applies;
 - (2) FTA recipients receiving planning, capital and/or operating assistance who will award prime contracts (excluding transit vehicle purchases) exceeding \$250,000 in FTA funds in a Federal fiscal year;
 - (3) FAA recipients receiving grants for airport planning or development who will award prime contracts exceeding \$250,000 in FAA funds in a Federal fiscal year.
- (b)(1) You must submit a DBE program conforming to this part by August 31, 1999 to the concerned operating administration (OA). Once the OA has approved your program, the approval counts for all of your DOT-assisted programs (except that goals are reviewed by the particular operating administration that provides funding for your DOT-assisted contracts).
- (2) You do not have to submit regular updates of your DBE programs, as long as you remain in compliance. However, you must submit significant changes in the program for approval.
- (c) You are not eligible to receive DOT financial assistance unless DOT has approved your DBE program and you are in compliance with it and this part. You must continue to carry out your program until all funds from DOT financial assistance have been expended.

[64 FR 5126, Feb. 2, 1999, as amended at 64 FR 34570, June 28, 1999; 65 FR 68951, Nov. 15, 2000]

§ 26.23 What is the requirement for a policy statement?

You must issue a signed and dated policy statement that expresses your commitment to your DBE program, states its objectives, and outlines responsibilities for its implementation. You must circulate the statement throughout your organization and to the DBE and non-DBE business communities that perform work on your DOT-assisted contracts.

§ 26.25 What is the requirement for a liaison officer?

You must have a DBE liaison officer, who shall have direct, independent access to your Chief Executive Officer concerning DBE program matters. The liaison officer shall be responsible for implementing all aspects of your DBE program. You must also have adequate staff to administer the program in compliance with this part.

§ 26.27 What efforts must recipients make concerning DBE financial institutions?

You must thoroughly investigate the full extent of services offered by financial institutions owned and controlled by socially and economically disadvantaged individuals in your community and make reasonable efforts to use these institutions. You must also encourage prime contractors to use such institutions.

§ 26.29 What prompt payment mechanisms must recipients have?

- (a) You must establish, as part of your DBE program, a contract clause to require prime contractors to pay subcontractors for satisfactory performance of their contracts no later than 30 days from receipt of each payment you make to the prime contractor.
- (b) You must ensure prompt and full payment of retainage from the prime contractor to the subcontractor within 30 days after the subcontractor's work is satisfactorily completed. You must use one of the following methods to comply with this requirement:
 - (1) You may decline to hold retainage from prime contractors and prohibit prime contractors from holding retainage from subcontractors.

(2) You may decline to hold retainage from prime contractors and require a contract clause obligating prime contractors to make prompt and full payment of any retainage kept by prime contractor to the subcontractor within 30 days after the subcontractor's work is satisfactorily completed.

(3) You may hold retainage from prime contractors and provide for prompt and regular incremental acceptances of portions of the prime contract, pay retainage to prime contractors based on these acceptances, and require a contract clause obligating the prime contractor to pay all retainage owed to the subcontractor for satisfactory completion of the accepted work within 30 days after your payment to the prime contractor.

(c) For purposes of this section, a subcontractor's work is satisfactorily completed when all the tasks called for in the subcontract have been accomplished and documented as required by the recipient. When a recipient has made an incremental acceptance of a portion of a prime contract, the work of a subcontractor covered by that acceptance is deemed to be satisfactorily completed.

(d) Your DBE program must provide appropriate means to enforce the requirements of this section. These means may include appropriate penalties for failure to comply, the terms and conditions of which you set. Your program may also provide that any delay or postponement of payment among the parties may take place only for good cause, with your prior written approval.

(e) You may also establish, as part of your DBE program, any of the following additional mechanisms to ensure prompt payment:

(1) A contract clause that requires prime contractors to include in their subcontracts language providing that prime contractors and subcontractors will use appropriate alternative dispute resolution mechanisms to resolve payment disputes. You may specify the nature of such mechanisms.

(2) A contract clause providing that the prime contractor will not be reimbursed for work performed by subcontractors unless and until the prime contractor ensures that the subcontractors are promptly paid for the work they have performed.

(3) Other mechanisms, consistent with this part and applicable state and local law, to ensure that DBEs and other contractors are fully and promptly paid.

[68 FR 35553, June 16, 2003]

§ 26.31 What information must you include in your DBE directory?

(a) In the directory required under § 26.81(g) of this Part, you must list all firms eligible to participate as DBEs in your program. In the listing for each firm, you must include its address, phone number, and the types of work the firm has been certified to perform as a DBE.

(b) You must list each type of work for which a firm is eligible to be certified by using the most specific NAICS code available to describe each type of work. You must make any changes to your current directory entries necessary to meet the requirement of this paragraph (a) by August 26, 2011.

[76 FR 5096, Jan. 28, 2011]

§ 26.33 What steps must a recipient take to address overconcentration of DBEs in certain types of work?

(a) If you determine that DBE firms are so overconcentrated in a certain type of work as to unduly burden the opportunity of non-DBE firms to participate in this type of work, you must devise appropriate measures to address this overconcentration.

(b) These measures may include the use of incentives, technical assistance, business development programs, mentor-protégé programs, and other appropriate measures designed to assist DBEs in performing work outside of the specific field in which you have determined that non-DBEs are unduly burdened. You may also consider varying your use of contract goals, to the extent consistent with § 26.51, to ensure that non-DBEs are not unfairly prevented from competing for subcontracts.

(c) You must obtain the approval of the concerned DOT operating administration for your determination of overconcentration and the measures you devise to address it. Once approved, the measures become part of your DBE program.

§ 26.35 What role do business development and mentor-protégé programs have in the DBE program?

(a) You may or, if an operating administration directs you to, you must establish a DBE business development program (BDP) to assist firms in gaining the ability to compete successfully in the marketplace outside the DBE program. You may require a DBE firm, as a condition of receiving assistance through the BDP, to agree to terminate its participation in the DBE program after a certain time has passed or certain objectives have been reached. See Appendix C of this part for guidance on administering BDP programs.

(b) As part of a BDP or separately, you may establish a “mentor-protégé” program, in which another DBE or non-DBE firm is the principal source of business development assistance to a DBE firm.

(1) Only firms you have certified as DBEs before they are proposed for participation in a mentor-protégé program are eligible to participate in the mentor-protégé program.

(2) During the course of the mentor-protégé relationship, you must:

(i) Not award DBE credit to a non-DBE mentor firm for using its own protégé firm for more than one half of its goal on any contract let by the recipient; and

(ii) Not award DBE credit to a non-DBE mentor firm for using its own protégé firm for more than every other contract performed by the protégé firm.

(3) For purposes of making determinations of business size under this part, you must not treat protégé firms as affiliates of mentor firms, when both firms are participating under an approved mentor-protégé program. See Appendix D of this part for guidance concerning the operation of mentor-protégé programs.

(c) Your BDPs and mentor-protégé programs must be approved by the concerned operating administration before you implement them. Once approved, they become part of your DBE program.

§ 26.37 What are a recipient's responsibilities for monitoring the performance of other program participants?

(a) You must implement appropriate mechanisms to ensure compliance with the part's requirements by all program participants (e.g., applying legal and contract remedies available under Federal, state and local law). You must set forth these mechanisms in your DBE program.

(b) Your DBE program must also include a monitoring and enforcement mechanism to ensure that work committed to DBEs at contract award or subsequently (e.g., as the result of modification to the contract) is actually performed by the DBEs to which the work was committed. This mechanism must include a written certification that you have reviewed contracting records and monitored work sites in your state for this purpose. The monitoring to which this paragraph

refers may be conducted in conjunction with monitoring of contract performance for other purposes (e.g., close-out reviews for a contract).

(c) This mechanism must provide for a running tally of actual DBE attainments (e.g., payments actually made to DBE firms), including a means of comparing these attainments to commitments. In your reports of DBE participation to the Department, you must display both commitments and attainments.

[64 FR 5126, Feb. 2, 1999, as amended at 65 FR 68951, Nov. 15, 2000; 68 FR 35554, June 16, 2003; 76 FR 5097, Jan. 28, 2011]

§ 26.39 Fostering small business participation.

(a) Your DBE program must include an element to structure contracting requirements to facilitate competition by small business concerns, taking all reasonable steps to eliminate obstacles to their participation, including unnecessary and unjustified bundling of contract requirements that may preclude small business participation in procurements as prime contractors or subcontractors.

(b) This element must be submitted to the appropriate DOT operating administration for approval as a part of your DBE program by February 28, 2012. As part of this program element you may include, but are not limited to, the following strategies:

(1) Establishing a race-neutral small business set-aside for prime contracts under a stated amount (e.g., \$1 million).

(2) In multi-year design-build contracts or other large contracts (e.g., for “megaprojects”) requiring bidders on the prime contract to specify elements of the contract or specific subcontracts that are of a size that small businesses, including DBEs, can reasonably perform.

(3) On prime contracts not having DBE contract goals, requiring the prime contractor to provide subcontracting opportunities of a size that small businesses, including DBEs, can reasonably perform, rather than self-performing all the work involved.

(4) Identifying alternative acquisition strategies and structuring procurements to facilitate the ability of consortia or joint ventures consisting of small businesses, including DBEs, to compete for and perform prime contracts.

(5) To meet the portion of your overall goal you project to meet through race-neutral measures, ensuring that a reasonable number of prime contracts are of a size that small businesses, including DBEs, can reasonably perform.

(c) You must actively implement your program elements to foster small business participation. Doing so is a requirement of good faith implementation of your DBE program.

[76 FR 5097, Jan. 28, 2011]

Subpart C—Goals, Good Faith Efforts, and Counting

§ 26.41 What is the role of the statutory 10 percent goal in this program?

(a) The statutes authorizing this program provide that, except to the extent the Secretary determines otherwise, not less than 10 percent of the authorized funds are to be expended with DBEs.

(b) This 10 percent goal is an aspirational goal at the national level, which the Department uses as a tool in evaluating and monitoring DBEs' opportunities to participate in DOT-assisted contracts.

(c) The national 10 percent goal does not authorize or require recipients to set overall or contract goals at the 10 percent level, or any other particular level, or to take any special administrative steps if their goals are above or below 10 percent.

§ 26.43 Can recipients use set-asides or quotas as part of this program?

(a) You are not permitted to use quotas for DBEs on DOT-assisted contracts subject to this part.

(b) You may not set-aside contracts for DBEs on DOT-assisted contracts subject to this part, except that, in limited and extreme circumstances, you may use set-asides when no other method could be reasonably expected to redress egregious instances of discrimination.

§ 26.45 How do recipients set overall goals?

(a)(1) Except as provided in paragraph (a)(2) of this section, you must set an overall goal for DBE participation in your DOT-assisted contracts.

(2) If you are a FTA or FAA recipient who reasonably anticipates awarding (excluding transit vehicle purchases) \$250,000 or less in FTA or FAA funds in prime contracts in a Federal fiscal year, you are not required to develop overall goals for FTA or FAA respectively for that fiscal year. However, if you have an existing DBE program, it must remain in effect and you must seek to fulfill the objectives outlined in § 26.1.

(b) Your overall goal must be based on demonstrable evidence of the availability of ready, willing and able DBEs relative to all businesses ready, willing and able to participate on your DOT-assisted contracts (hereafter, the "relative availability of DBEs"). The goal must reflect your determination of the level of DBE participation you would expect absent the effects of discrimination. You cannot simply rely on either the 10 percent national goal, your previous overall goal or past DBE participation rates in your program without reference to the relative availability of DBEs in your market.

(c) *Step 1.* You must begin your goal setting process by determining a base figure for the relative availability of DBEs. The following are examples of approaches that you may take toward determining a base figure. These examples are provided as a starting point for your goal setting process. Any percentage figure derived from one of these examples should be considered a basis from which you begin when examining all evidence available in your jurisdiction. These examples are not intended as an exhaustive list. Other methods or combinations of methods to determine a base figure may be used, subject to approval by the concerned operating administration.

(1) *Use DBE Directories and Census Bureau Data.* Determine the number of ready, willing and able DBEs in your market from your DBE directory. Using the Census Bureau's County Business Pattern (CBP) data base, determine the number of all ready, willing and able businesses available in your market that perform work in the same NAICS codes. (Information about the CBP data base may be obtained from the Census Bureau at their web site, www.census.gov/epcd/cbp/view/cbpview.html.) Divide the number of DBEs by the number of all businesses to derive a base figure for the relative availability of DBEs in your market.

(2) *Use a bidders list.* Determine the number of DBEs that have bid or quoted on your DOT-assisted prime contracts or subcontracts in the previous year. Determine the number of all businesses that have bid or quoted on prime or subcontracts in the same time period. Divide the number of DBE bidders and quoters by the number for all businesses to derive a base figure for the relative availability of DBEs in your market.

(3) *Use data from a disparity study.* Use a percentage figure derived from data in a valid, applicable disparity study.

(4) *Use the goal of another DOT recipient.* If another DOT recipient in the same, or substantially similar, market has set an overall goal in compliance with this rule, you may use that goal as a base figure for your goal.

(5) *Alternative methods.* You may use other methods to determine a base figure for your overall goal. Any methodology you choose must be based on demonstrable evidence of local market conditions and be designed to ultimately attain a goal that is rationally related to the relative availability of DBEs in your market.

(d) *Step 2.* Once you have calculated a base figure, you must examine all of the evidence available in your jurisdiction to determine what adjustment, if any, is needed to the base figure in order to arrive at your overall goal.

(1) There are many types of evidence that must be considered when adjusting the base figure. These include:

(i) The current capacity of DBEs to perform work in your DOT-assisted contracting program, as measured by the volume of work DBEs have performed in recent years;

(ii) Evidence from disparity studies conducted anywhere within your jurisdiction, to the extent it is not already accounted for in your base figure; and

(iii) If your base figure is the goal of another recipient, you must adjust it for differences in your local market and your contracting program.

(2) If available, you must consider evidence from related fields that affect the opportunities for DBEs to form, grow and compete. These include, but are not limited to:

(i) Statistical disparities in the ability of DBEs to get the financing, bonding and insurance required to participate in your program;

(ii) Data on employment, self-employment, education, training and union apprenticeship programs, to the extent you can relate it to the opportunities for DBEs to perform in your program.

(3) If you attempt to make an adjustment to your base figure to account for the continuing effects of past discrimination (often called the "but for" factor) or the effects of an ongoing DBE program, the adjustment must be based on demonstrable evidence that is logically and directly related to the effect for which the adjustment is sought.

(e) Once you have determined a percentage figure in accordance with paragraphs (c) and (d) of this section, you should express your overall goal as follows:

(1) If you are an FHWA recipient, as a percentage of all Federal-aid highway funds you will expend in FHWA-assisted contracts in the forthcoming three fiscal years.

(2) If you are an FTA or FAA recipient, as a percentage of all FT or FAA funds (exclusive of FTA funds to be used for the purchase of transit vehicles) that you will expend in FTA or FAA-assisted contracts in the three forthcoming fiscal years.

(3) In appropriate cases, the FHWA, FTA or FAA Administrator may permit or require you to express your overall goal as a percentage of funds for a particular grant or project or group of grants and/or projects. Like other overall goals, a project goal may be adjusted to reflect changed circumstances, with the concurrence of the appropriate operating administration.

(i) A project goal is an overall goal, and must meet all the substantive and procedural requirements of this section pertaining to overall goals.

(ii) A project goal covers the entire length of the project to which it applies.

- (iii) The project goal should include a projection of the DBE participation anticipated to be obtained during each fiscal year covered by the project goal.
- (iv) The funds for the project to which the project goal pertains are separated from the base from which your regular overall goal, applicable to contracts not part of the project covered by a project goal, is calculated.
- (f)(1)(i) If you set your overall goal on a fiscal year basis, you must submit it to the applicable DOT operating administration by August 1 at three-year intervals, based on a schedule established by the FHWA, FTA, or FAA, as applicable, and posted on that agency's Web site.
- (ii) You may adjust your three-year overall goal during the three-year period to which it applies, in order to reflect changed circumstances. You must submit such an adjustment to the concerned operating administration for review and approval.
- (iii) The operating administration may direct you to undertake a review of your goal if necessary to ensure that the goal continues to fit your circumstances appropriately.
- (iv) While you are required to submit an overall goal to FHWA, FTA, or FAA only every three years, the overall goal and the provisions of Sec. 26.47(c) apply to each year during that three-year period.
- (v) You may make, for informational purposes, projections of your expected DBE achievements during each of the three years covered by your overall goal. However, it is the overall goal itself, and not these informational projections, to which the provisions of section 26.47(c) of this part apply.
- (2) If you are a recipient and set your overall goal on a project or grant basis as provided in paragraph (e)(3) of this section, you must submit the goal for review at a time determined by the FHWA, FTA or FAA Administrator, as applicable.
- (3) You must include with your overall goal submission a description of the methodology you used to establish the goal, including your base figure and the evidence with which it was calculated, and the adjustments you made to the base figure and the evidence you relied on for the adjustments. You should also include a summary listing of the relevant available evidence in your jurisdiction and, where applicable, an explanation of why you did not use that evidence to adjust your base figure. You must also include your projection of the portions of the overall goal you expect to meet through race-neutral and race-conscious measures, respectively (see 26.51(c)).
- (4) You are not required to obtain prior operating administration concurrence with your overall goal. However, if the operating administration's review suggests that your overall goal has not been correctly calculated, or that your method for calculating goals is inadequate, the operating administration may, after consulting with you, adjust your overall goal or require that you do so. The adjusted overall goal is binding on you.
- (5) If you need additional time to collect data or take other steps to develop an approach to setting overall goals, you may request the approval of the concerned operating administration for an interim goal and/or goal-setting mechanism. Such a mechanism must:
- (i) Reflect the relative availability of DBEs in your local market to the maximum extent feasible given the data available to you; and
- (ii) Avoid imposing undue burdens on non-DBEs.
- (6) Timely submission and operating administration approval of your overall goal is a condition of eligibility for DOT financial assistance.

(7) If you fail to establish and implement goals as provided in this section, you are not in compliance with this part. If you establish and implement goals in a way different from that provided in this part, you are not in compliance with this part. If you fail to comply with this requirement, you are not eligible to receive DOT financial assistance.

(g) In establishing an overall goal, you must provide for public participation. This public participation must include:

(1) Consultation with minority, women's and general contractor groups, community organizations, and other officials or organizations which could be expected to have information concerning the availability of disadvantaged and non-disadvantaged businesses, the effects of discrimination on opportunities for DBEs, and your efforts to establish a level playing field for the participation of DBEs.

(2) A published notice announcing your proposed overall goal, informing the public that the proposed goal and its rationale are available for inspection during normal business hours at your principal office for 30 days following the date of the notice, and informing the public that you and the Department will accept comments on the goals for 45 days from the date of the notice. The notice must include addresses to which comments may be sent, and you must publish it in general circulation media and available minority-focused media and trade association publications.

(h) Your overall goals must provide for participation by all certified DBEs and must not be subdivided into group-specific goals.

[64 FR 5126, Feb. 2, 1999, as amended at 64 FR 34570, June 28, 1999; 65 FR 68951, Nov. 15, 2000; 68 FR 35553, June 16, 2003; 75 FR 5536, Feb. 3, 2010; 76 FR 5097, Jan. 28, 2011]

§ 26.47 Can recipients be penalized for failing to meet overall goals?

(a) You cannot be penalized, or treated by the Department as being in noncompliance with this rule, because your DBE participation falls short of your overall goal, unless you have failed to administer your program in good faith.

(b) If you do not have an approved DBE program or overall goal, or if you fail to implement your program in good faith, you are in noncompliance with this part.

(c) If the awards and commitments shown on your Uniform Report of Awards or Commitments and Payments at the end of any fiscal year are less than the overall goal applicable to that fiscal year, you must do the following in order to be regarded by the Department as implementing your DBE program in good faith:

(1) Analyze in detail the reasons for the difference between the overall goal and your awards and commitments in that fiscal year;

(2) Establish specific steps and milestones to correct the problems you have identified in your analysis and to enable you to meet fully your goal for the new fiscal year;

(3)(i) If you are a state highway agency; one of the 50 largest transit authorities as determined by the FTA; or an Operational Evolution Partnership Plan airport or other airport designated by the FAA, you must submit, within 90 days of the end of the fiscal year, the analysis and corrective actions developed under paragraphs (c)(1) and (2) of this section to the appropriate operating administration for approval. If the operating administration approves the report, you will be regarded as complying with the requirements of this section for the remainder of the fiscal year.

(ii) As a transit authority or airport not meeting the criteria of paragraph (c)(3)(i) of this section, you must retain analysis and corrective actions in your records for three years and make it available to FTA or FAA on request for their review.

(4) FHWA, FTA, or FAA may impose conditions on the recipient as part of its approval of the recipient's analysis and corrective actions including, but not limited to, modifications to your overall goal methodology, changes in your race-conscious/race-neutral split, or the introduction of additional race-neutral or race-conscious measures.

(5) You may be regarded as being in noncompliance with this Part, and therefore subject to the remedies in § 26.103 or § 26.105 of this part and other applicable regulations, for failing to implement your DBE program in good faith if any of the following things occur:

(i) You do not submit your analysis and corrective actions to FHWA, FTA, or FAA in a timely manner as required under paragraph (c)(3) of this section;

(ii) FHWA, FTA, or FAA disapproves your analysis or corrective actions; or

(iii) You do not fully implement the corrective actions to which you have committed or conditions that FHWA, FTA, or FAA has imposed following review of your analysis and corrective actions.

(d) If, as recipient, your Uniform Report of DBE Awards or Commitments and Payments or other information coming to the attention of FTA, FHWA, or FAA, demonstrates that current trends make it unlikely that you will achieve DBE awards and commitments that would be necessary to allow you to meet your overall goal at the end of the fiscal year, FHWA, FTA, or FAA, as applicable, may require you to make further good faith efforts, such as by modifying your race-conscious/race-neutral split or introducing additional race-neutral or race-conscious measures for the remainder of the fiscal year.

[64 FR 5126, Feb. 2, 1999, as amended at 76 FR 5098, Jan. 28, 2011]

§ 26.49 How are overall goals established for transit vehicle manufacturers?

(a) If you are an FTA recipient, you must require in your DBE program that each transit vehicle manufacturer, as a condition of being authorized to bid or propose on FTA-assisted transit vehicle procurements, certify that it has complied with the requirements of this section. You do not include FTA assistance used in transit vehicle procurements in the base amount from which your overall goal is calculated.

(b) If you are a transit vehicle manufacturer, you must establish and submit for FTA's approval an annual overall percentage goal. In setting your overall goal, you should be guided, to the extent applicable, by the principles underlying § 26.45. The base from which you calculate this goal is the amount of FTA financial assistance included in transit vehicle contracts you will perform during the fiscal year in question. You must exclude from this base funds attributable to work performed outside the United States and its territories, possessions, and commonwealths. The requirements and procedures of this part with respect to submission and approval of overall goals apply to you as they do to recipients.

(c) As a transit vehicle manufacturer, you may make the certification required by this section if you have submitted the goal this section requires and FTA has approved it or not disapproved it.

(d) As a recipient, you may, with FTA approval, establish project-specific goals for DBE participation in the procurement of transit vehicles in lieu of complying through the procedures of this section.

(e) If you are an FHWA or FAA recipient, you may, with FHWA or FAA approval, use the procedures of this section with respect to procurements of vehicles or specialized equipment. If you choose to do so, then the manufacturers of this equipment must meet the same requirements (including goal approval by FHWA or FAA) as transit vehicle manufacturers must meet in FTA-assisted procurements.

§ 26.51 What means do recipients use to meet overall goals?

(a) You must meet the maximum feasible portion of your overall goal by using race-neutral means of facilitating DBE participation. Race-neutral DBE participation includes any time a DBE wins a prime contract through customary competitive procurement procedures, is awarded a subcontract on a prime contract that does not carry a DBE goal, or even if there is a DBE goal, wins a subcontract from a prime contractor that did not consider its DBE status in making the award (e.g., a prime contractor that uses a strict low bid system to award subcontracts).

(b) Race-neutral means include, but are not limited to, the following:

(1) Arranging solicitations, times for the presentation of bids, quantities, specifications, and delivery schedules in ways that facilitate participation by DBEs and other small businesses and by making contracts more accessible to small businesses, by means such as those provided under § 26.39 of this part.

(2) Providing assistance in overcoming limitations such as inability to obtain bonding or financing (e.g., by such means as simplifying the bonding process, reducing bonding requirements, eliminating the impact of surety costs from bids, and providing services to help DBEs, and other small businesses, obtain bonding and financing);

(3) Providing technical assistance and other services;

(4) Carrying out information and communications programs on contracting procedures and specific contract opportunities (e.g., ensuring the inclusion of DBEs, and other small businesses, on recipient mailing lists for bidders; ensuring the dissemination to bidders on prime contracts of lists of potential subcontractors; provision of information in languages other than English, where appropriate);

(5) Implementing a supportive services program to develop and improve immediate and long-term business management, record keeping, and financial and accounting capability for DBEs and other small businesses;

(6) Providing services to help DBEs, and other small businesses, improve long-term development, increase opportunities to participate in a variety of kinds of work, handle increasingly significant projects, and achieve eventual self-sufficiency;

(7) Establishing a program to assist new, start-up firms, particularly in fields in which DBE participation has historically been low;

(8) Ensuring distribution of your DBE directory, through print and electronic means, to the widest feasible universe of potential prime contractors; and

(9) Assisting DBEs, and other small businesses, to develop their capability to utilize emerging technology and conduct business through electronic media.

(c) Each time you submit your overall goal for review by the concerned operating administration, you must also submit your projection of the portion of the goal that you expect to meet through race-neutral means and your basis for that projection. This projection is subject to approval by the concerned operating administration, in conjunction with its review of your overall goal.

(d) You must establish contract goals to meet any portion of your overall goal you do not project being able to meet using race-neutral means.

(e) The following provisions apply to the use of contract goals:

(1) You may use contract goals only on those DOT-assisted contracts that have subcontracting possibilities.

(2) You are not required to set a contract goal on every DOT-assisted contract. You are not required to set each contract goal at the same percentage level as the overall goal. The goal for a specific contract may be higher or lower than that percentage level of the overall goal, depending on such factors as the type of work involved, the location of the work, and the availability of DBEs for the work of the particular contract. However, over the period covered by your overall goal, you must set contract goals so that they will cumulatively result in meeting any portion of your overall goal you do not project being able to meet through the use of race-neutral means.

(3) Operating administration approval of each contract goal is not necessarily required. However, operating administrations may review and approve or disapprove any contract goal you establish.

(4) Your contract goals must provide for participation by all certified DBEs and must not be subdivided into group-specific goals.

(f) To ensure that your DBE program continues to be narrowly tailored to overcome the effects of discrimination, you must adjust your use of contract goals as follows:

(1) If your approved projection under paragraph (c) of this section estimates that you can meet your entire overall goal for a given year through race-neutral means, you must implement your program without setting contract goals during that year, unless it becomes necessary in order to meet your overall goal.

Example to paragraph (f)(1): Your overall goal for Year 1 is 12 percent. You estimate that you can obtain 12 percent or more DBE participation through the use of race-neutral measures, without any use of contract goals. In this case, you do not set any contract goals for the contracts that will be performed in Year 1. However, if part way through Year 1, your DBE awards or commitments are not at a level that would permit you to achieve your overall goal for Year 1, you could begin setting race-conscious DBE contract goals during the remainder of the year as part of your obligation to implement your program in good faith.

(2) If, during the course of any year in which you are using contract goals, you determine that you will exceed your overall goal, you must reduce or eliminate the use of contract goals to the extent necessary to ensure that the use of contract goals does not result in exceeding the overall goal. If you determine that you will fall short of your overall goal, then you must make appropriate modifications in your use of race-neutral and/or race-conscious measures to allow you to meet the overall goal.

Example to paragraph (f)(2): In Year II, your overall goal is 12 percent. You have estimated that you can obtain 5 percent DBE participation through use of race-neutral measures. You therefore plan to obtain the remaining 7 percent participation through use of DBE goals. By September, you have already obtained 11 percent DBE participation for the year. For contracts let during the remainder of the year, you use contract goals only to the extent necessary to obtain an additional one percent DBE participation. However, if you determine in September that your participation for the year is likely to be only 8 percent total, then you would increase your use of race-neutral and/or race-conscious means during the remainder of the year in order to achieve your overall goal.

(3) If the DBE participation you have obtained by race-neutral means alone meets or exceeds your overall goals for two consecutive years, you are not required to make a projection of the amount of your goal you can meet using such means in the next year. You do not set contract goals on any contracts in the next year. You continue using only race-neutral means to meet your overall goals unless and until you do not meet your overall goal for a year.

Example to paragraph (f)(3): Your overall goal for Years I and Year II is 10 percent. The DBE participation you obtain through race-neutral means alone is 10 percent or more in each year. (For this purpose, it does not matter whether you obtained additional DBE participation through using contract goals in these years.) In Year III and following years, you do not need to make a projection under paragraph (c) of this section of the portion of your overall goal you expect to meet using race-neutral means. You simply use race-neutral means to achieve your overall goals. However, if in Year VI your DBE participation falls short of your overall goal, then you must make a paragraph (c) projection for Year VII and, if necessary, resume use of contract goals in that year.

(4) If you obtain DBE participation that exceeds your overall goal in two consecutive years through the use of contract goals (*i.e.* , not through the use of race-neutral means alone), you must reduce your use of contract goals proportionately in the following year.

Example to paragraph (f)(4): In Years I and II, your overall goal is 12 percent, and you obtain 14 and 16 percent DBE participation, respectively. You have exceeded your goals over the two-year period by an average of 25 percent. In Year III, your overall goal is again 12 percent, and your paragraph (c) projection estimates that you will obtain 4 percent DBE participation through race-neutral means and 8 percent through contract goals. You then reduce the contract goal projection by 25 percent (*i.e.* , from 8 to 6 percent) and set contract goals accordingly during the year. If in Year III you obtain 11 percent participation, you do not use this contract goal adjustment mechanism for Year IV, because there have not been two *consecutive* years of exceeding overall goals.

(g) In any year in which you project meeting part of your goal through race-neutral means and the remainder through contract goals, you must maintain data separately on DBE achievements in those contracts with and without contract goals, respectively. You must report this data to the concerned operating administration as provided in § 26.11.

[64 FR 5126, Feb. 2, 1999, as amended at 76 FR 5098, Jan. 28, 2011]

§ 26.53 What are the good faith efforts procedures recipients follow in situations where there are contract goals?

(a) When you have established a DBE contract goal, you must award the contract only to a bidder/offeror who makes good faith efforts to meet it. You must determine that a bidder/offeror has made good faith efforts if the bidder/offeror does either of the following things:

(1) Documents that it has obtained enough DBE participation to meet the goal; or

(2) Documents that it made adequate good faith efforts to meet the goal, even though it did not succeed in obtaining enough DBE participation to do so. If the bidder/offeror does document adequate good faith efforts, you must not deny award of the contract on the basis that the bidder/offeror failed to meet the goal. See Appendix A of this part for guidance in determining the adequacy of a bidder/offeror's good faith efforts.

(b) In your solicitations for DOT-assisted contracts for which a contract goal has been established, you must require the following:

(1) Award of the contract will be conditioned on meeting the requirements of this section;

(2) All bidders/offerors will be required to submit the following information to the recipient, at the time provided in paragraph (b)(3) of this section:

(i) The names and addresses of DBE firms that will participate in the contract;

(ii) A description of the work that each DBE will perform;

(iii) The dollar amount of the participation of each DBE firm participating;

(iv) Written documentation of the bidder/offeror's commitment to use a DBE subcontractor whose participation it submits to meet a contract goal;

(v) Written confirmation from the DBE that it is participating in the contract as provided in the prime contractor's commitment; and

(vi) If the contract goal is not met, evidence of good faith efforts (see Appendix A of this part); and

(3) At your discretion, the bidder/offeror must present the information required by paragraph (b)(2) of this section—

(i) Under sealed bid procedures, as a matter of responsiveness, or with initial proposals, under contract negotiation procedures; or

(ii) At any time before you commit yourself to the performance of the contract by the bidder/offeror, as a matter of responsibility.

(c) You must make sure all information is complete and accurate and adequately documents the bidder/offeror's good faith efforts before committing yourself to the performance of the contract by the bidder/offeror.

(d) If you determine that the apparent successful bidder/offeror has failed to meet the requirements of paragraph (a) of this section, you must, before awarding the contract, provide the bidder/offeror an opportunity for administrative reconsideration.

(1) As part of this reconsideration, the bidder/offeror must have the opportunity to provide written documentation or argument concerning the issue of whether it met the goal or made adequate good faith efforts to do so.

(2) Your decision on reconsideration must be made by an official who did not take part in the original determination that the bidder/offeror failed to meet the goal or make adequate good faith efforts to do so.

(3) The bidder/offeror must have the opportunity to meet in person with your reconsideration official to discuss the issue of whether it met the goal or made adequate good faith efforts to do so.

(4) You must send the bidder/offeror a written decision on reconsideration, explaining the basis for finding that the bidder did or did not meet the goal or make adequate good faith efforts to do so.

(5) The result of the reconsideration process is not administratively appealable to the Department of Transportation.

(e) In a "design-build" or "turnkey" contracting situation, in which the recipient lets a master contract to a contractor, who in turn lets subsequent subcontracts for the work of the project, a recipient may establish a goal for the project. The master contractor then establishes contract goals, as appropriate, for the subcontracts it lets. Recipients must maintain oversight of the master contractor's activities to ensure that they are conducted consistent with the requirements of this part.

(f)(1) You must require that a prime contractor not terminate a DBE subcontractor listed in response to paragraph (b)(2) of this section (or an approved substitute DBE firm) without your prior written consent. This includes, but is not limited to, instances in which a prime contractor seeks to perform work originally designated for a DBE subcontractor with its own forces or those of an affiliate, a non-DBE firm, or with another DBE firm.

(2) You may provide such written consent only if you agree, for reasons stated in your concurrence document, that the prime contractor has good cause to terminate the DBE firm.

(3) For purposes of this paragraph, good cause includes the following circumstances:

(i) The listed DBE subcontractor fails or refuses to execute a written contract;

(ii) The listed DBE subcontractor fails or refuses to perform the work of its subcontract in a way consistent with normal industry standards. Provided, however, that good cause does not exist if

the failure or refusal of the DBE subcontractor to perform its work on the subcontract results from the bad faith or discriminatory action of the prime contractor;

(iii) The listed DBE subcontractor fails or refuses to meet the prime contractor's reasonable, nondiscriminatory bond requirements.

(iv) The listed DBE subcontractor becomes bankrupt, insolvent, or exhibits credit unworthiness;

(v) The listed DBE subcontractor is ineligible to work on public works projects because of suspension and debarment proceedings pursuant 2 CFR Parts 180, 215 and 1,200 or applicable state law;

(vi) You have determined that the listed DBE subcontractor is not a responsible contractor;

(vii) The listed DBE subcontractor voluntarily withdraws from the project and provides to you written notice of its withdrawal;

(viii) The listed DBE is ineligible to receive DBE credit for the type of work required;

(ix) A DBE owner dies or becomes disabled with the result that the listed DBE contractor is unable to complete its work on the contract;

(x) Other documented good cause that you determine compels the termination of the DBE subcontractor.

Provided, that good cause does not exist if the prime contractor seeks to terminate a DBE it relied upon to obtain the contract so that the prime contractor can self-perform the work for which the DBE contractor was engaged or so that the prime contractor can substitute another DBE or non-DBE contractor after contract award.

(4) Before transmitting to you its request to terminate and/or substitute a DBE subcontractor, the prime contractor must give notice in writing to the DBE subcontractor, with a copy to you, of its intent to request to terminate and/or substitute, and the reason for the request.

(5) The prime contractor must give the DBE five days to respond to the prime contractor's notice and advise you and the contractor of the reasons, if any, why it objects to the proposed termination of its subcontract and why you should not approve the prime contractor's action. If required in a particular case as a matter of public necessity (e.g., safety), you may provide a response period shorter than five days.

(6) In addition to post-award terminations, the provisions of this section apply to preaward deletions of or substitutions for DBE firms put forward by offerors in negotiated procurements.

(g) When a DBE subcontractor is terminated, or fails to complete its work on the contract for any reason, you must require the prime contractor to make good faith efforts to find another DBE subcontractor to substitute for the original DBE. These good faith efforts shall be directed at finding another DBE to perform at least the same amount of work under the contract as the DBE that was terminated, to the extent needed to meet the contract goal you established for the procurement.

(h) You must include in each prime contract a provision for appropriate administrative remedies that you will invoke if the prime contractor fails to comply with the requirements of this section.

(i) You must apply the requirements of this section to DBE bidders/offerors for prime contracts. In determining whether a DBE bidder/offeror for a prime contract has met a contract goal, you count the work the DBE has committed to performing with its own forces as well as the work that it has committed to be performed by DBE subcontractors and DBE suppliers.

[64 FR 5126, Feb. 2, 1999, as amended at 76 FR 5098, Jan. 28, 2011]

§ 26.55 How is DBE participation counted toward goals?

(a) When a DBE participates in a contract, you count only the value of the work actually performed by the DBE toward DBE goals.

(1) Count the entire amount of that portion of a construction contract (or other contract not covered by paragraph (a)(2) of this section) that is performed by the DBE's own forces. Include the cost of supplies and materials obtained by the DBE for the work of the contract, including supplies purchased or equipment leased by the DBE (except supplies and equipment the DBE subcontractor purchases or leases from the prime contractor or its affiliate).

(2) Count the entire amount of fees or commissions charged by a DBE firm for providing a bona fide service, such as professional, technical, consultant, or managerial services, or for providing bonds or insurance specifically required for the performance of a DOT-assisted contract, toward DBE goals, provided you determine the fee to be reasonable and not excessive as compared with fees customarily allowed for similar services.

(3) When a DBE subcontracts part of the work of its contract to another firm, the value of the subcontracted work may be counted toward DBE goals only if the DBE's subcontractor is itself a DBE. Work that a DBE subcontracts to a non-DBE firm does not count toward DBE goals.

(b) When a DBE performs as a participant in a joint venture, count a portion of the total dollar value of the contract equal to the distinct, clearly defined portion of the work of the contract that the DBE performs with its own forces toward DBE goals.

(c) Count expenditures to a DBE contractor toward DBE goals only if the DBE is performing a commercially useful function on that contract.

(1) A DBE performs a commercially useful function when it is responsible for execution of the work of the contract and is carrying out its responsibilities by actually performing, managing, and supervising the work involved. To perform a commercially useful function, the DBE must also be responsible, with respect to materials and supplies used on the contract, for negotiating price, determining quality and quantity, ordering the material, and installing (where applicable) and paying for the material itself. To determine whether a DBE is performing a commercially useful function, you must evaluate the amount of work subcontracted, industry practices, whether the amount the firm is to be paid under the contract is commensurate with the work it is actually performing and the DBE credit claimed for its performance of the work, and other relevant factors.

(2) A DBE does not perform a commercially useful function if its role is limited to that of an extra participant in a transaction, contract, or project through which funds are passed in order to obtain the appearance of DBE participation. In determining whether a DBE is such an extra participant, you must examine similar transactions, particularly those in which DBEs do not participate.

(3) If a DBE does not perform or exercise responsibility for at least 30 percent of the total cost of its contract with its own work force, or the DBE subcontracts a greater portion of the work of a contract than would be expected on the basis of normal industry practice for the type of work involved, you must presume that it is not performing a commercially useful function.

(4) When a DBE is presumed not to be performing a commercially useful function as provided in paragraph (c)(3) of this section, the DBE may present evidence to rebut this presumption. You may determine that the firm is performing a commercially useful function given the type of work involved and normal industry practices.

(5) Your decisions on commercially useful function matters are subject to review by the concerned operating administration, but are not administratively appealable to DOT.

(d) Use the following factors in determining whether a DBE trucking company is performing a commercially useful function:

(1) The DBE must be responsible for the management and supervision of the entire trucking operation for which it is responsible on a particular contract, and there cannot be a contrived arrangement for the purpose of meeting DBE goals.

(2) The DBE must itself own and operate at least one fully licensed, insured, and operational truck used on the contract.

(3) The DBE receives credit for the total value of the transportation services it provides on the contract using trucks it owns, insures, and operates using drivers it employs.

(4) The DBE may lease trucks from another DBE firm, including an owner-operator who is certified as a DBE. The DBE who leases trucks from another DBE receives credit for the total value of the transportation services the lessee DBE provides on the contract.

(5) The DBE may also lease trucks from a non-DBE firm, including from an owner-operator. The DBE who leases trucks from a non-DBE is entitled to credit for the total value of transportation services provided by non-DBE lessees not to exceed the value of transportation services provided by DBE-owned trucks on the contract. Additional participation by non-DBE lessees receives credit only for the fee or commission it receives as a result of the lease arrangement. If a recipient chooses this approach, it must obtain written consent from the appropriate Department Operating Administration.

Example to this paragraph (d)(5): DBE Firm X uses two of its own trucks on a contract. It leases two trucks from DBE Firm Y and six trucks from non-DBE Firm Z. DBE credit would be awarded for the total value of transportation services provided by Firm X and Firm Y, and may also be awarded for the total value of transportation services provided by four of the six trucks provided by Firm Z. In all, full credit would be allowed for the participation of eight trucks. With respect to the other two trucks provided by Firm Z, DBE credit could be awarded only for the fees or commissions pertaining to those trucks Firm X receives as a result of the lease with Firm Z.

(6) For purposes of this paragraph (d), a lease must indicate that the DBE has exclusive use of and control over the truck. This does not preclude the leased truck from working for others during the term of the lease with the consent of the DBE, so long as the lease gives the DBE absolute priority for use of the leased truck. Leased trucks must display the name and identification number of the DBE.

(e) Count expenditures with DBEs for materials or supplies toward DBE goals as provided in the following:

(1)(i) If the materials or supplies are obtained from a DBE manufacturer, count 100 percent of the cost of the materials or supplies toward DBE goals.

(ii) For purposes of this paragraph (e)(1), a manufacturer is a firm that operates or maintains a factory or establishment that produces, on the premises, the materials, supplies, articles, or equipment required under the contract and of the general character described by the specifications.

(2)(i) If the materials or supplies are purchased from a DBE regular dealer, count 60 percent of the cost of the materials or supplies toward DBE goals.

(ii) For purposes of this section, a regular dealer is a firm that owns, operates, or maintains a store, warehouse, or other establishment in which the materials, supplies, articles or equipment of the general character described by the specifications and required under the contract are bought, kept in stock, and regularly sold or leased to the public in the usual course of business.

(A) To be a regular dealer, the firm must be an established, regular business that engages, as its principal business and under its own name, in the purchase and sale or lease of the products in question.

(B) A person may be a regular dealer in such bulk items as petroleum products, steel, cement, gravel, stone, or asphalt without owning, operating, or maintaining a place of business as provided in this paragraph (e)(2)(ii) if the person both owns and operates distribution equipment for the products. Any supplementing of regular dealers' own distribution equipment shall be by a long-term lease agreement and not on an ad hoc or contract-by-contract basis.

(C) Packagers, brokers, manufacturers' representatives, or other persons who arrange or expedite transactions are not regular dealers within the meaning of this paragraph (e)(2).

(3) With respect to materials or supplies purchased from a DBE which is neither a manufacturer nor a regular dealer, count the entire amount of fees or commissions charged for assistance in the procurement of the materials and supplies, or fees or transportation charges for the delivery of materials or supplies required on a job site, toward DBE goals, provided you determine the fees to be reasonable and not excessive as compared with fees customarily allowed for similar services. Do not count any portion of the cost of the materials and supplies themselves toward DBE goals, however.

(f) If a firm is not currently certified as a DBE in accordance with the standards of subpart D of this part at the time of the execution of the contract, do not count the firm's participation toward any DBE goals, except as provided for in § 26.87(i).

(g) Do not count the dollar value of work performed under a contract with a firm after it has ceased to be certified toward your overall goal.

(h) Do not count the participation of a DBE subcontractor toward a contractor's final compliance with its DBE obligations on a contract until the amount being counted has actually been paid to the DBE.

[64 FR 5126, Feb. 2, 1999, as amended at 65 FR 68951, Nov. 15, 2000; 68 FR 35554, June 16, 2003]

Subpart D—Certification Standards

§ 26.61 How are burdens of proof allocated in the certification process?

(a) In determining whether to certify a firm as eligible to participate as a DBE, you must apply the standards of this subpart.

(b) The firm seeking certification has the burden of demonstrating to you, by a preponderance of the evidence, that it meets the requirements of this subpart concerning group membership or individual disadvantage, business size, ownership, and control.

(c) You must rebuttably presume that members of the designated groups identified in § 26.67(a) are socially and economically disadvantaged. This means they do not have the burden of proving to you that they are socially and economically disadvantaged. In order to obtain the benefit of the rebuttable presumption, individuals must submit a signed, notarized statement that they are a member of one of the groups in § 26.67(a). Applicants do have the obligation to provide you information concerning their economic disadvantage (see § 26.67).

(d) Individuals who are not presumed to be socially and economically disadvantaged, and individuals concerning whom the presumption of disadvantage has been rebutted, have the burden of proving to you, by a preponderance of the evidence, that they are socially and economically disadvantaged. (See Appendix E of this part.)

(e) You must make determinations concerning whether individuals and firms have met their burden of demonstrating group membership, ownership, control, and social and economic disadvantage (where disadvantage must be demonstrated on an individual basis) by considering all the facts in the record, viewed as a whole.

[64 FR 5126, Feb. 2, 1999, as amended at 68 FR 35554, June 16, 2003]

§ 26.63 What rules govern group membership determinations?

(a)(1) If, after reviewing the signed notarized statement of membership in a presumptively disadvantaged group (see § 26.61(c)), you have a well founded reason to question the individual's claim of membership in that group, you must require the individual to present additional evidence that he or she is a member of the group.

(2) You must provide the individual a written explanation of your reasons for questioning his or her group membership and a written request for additional evidence as outlined in paragraph (b) of this section.

(3) In implementing this section, you must take special care to ensure that you do not impose a disproportionate burden on members of any particular designated group. Imposing a disproportionate burden on members of a particular group could violate § 26.7(b) and/or Title VI of the Civil Rights Act of 1964 and 49 CFR part 21.

(b) In making such a determination, you must consider whether the person has held himself out to be a member of the group over a long period of time prior to application for certification and whether the person is regarded as a member of the group by the relevant community. You may require the applicant to produce appropriate documentation of group membership.

(1) If you determine that an individual claiming to be a member of a group presumed to be disadvantaged is not a member of a designated disadvantaged group, the individual must demonstrate social and economic disadvantage on an individual basis.

(2) Your decisions concerning membership in a designated group are subject to the certification appeals procedure of § 26.89.

[64 FR 5126, Feb. 2, 1999, as amended at 68 FR 35554, June 16, 2003]

§ 26.65 What rules govern business size determinations?

(a) To be an eligible DBE, a firm (including its affiliates) must be an existing small business, as defined by Small Business Administration (SBA) standards. As a recipient, you must apply current SBA business size standard(s) found in 13 CFR part 121 appropriate to the type(s) of work the firm seeks to perform in DOT-assisted contracts.

(b) Even if it meets the requirements of paragraph (a) of this section, a firm is not an eligible DBE in any Federal fiscal year if the firm (including its affiliates) has had average annual gross receipts, as defined by SBA regulations (see 13 CFR 121.402), over the firm's previous three fiscal years, in excess of \$22.41 million.

(c) The Department adjusts the number in paragraph (b) of this section annually using the Department of Commerce price deflators for purchases by State and local governments as the basis for this adjustment.

[74 FR 15224, Apr. 3, 2009]

§ 26.67 What rules determine social and economic disadvantage?

(a) *Presumption of disadvantage.* (1) You must rebuttably presume that citizens of the United States (or lawfully admitted permanent residents) who are women, Black Americans, Hispanic Americans, Native Americans, Asian-Pacific Americans, Subcontinent Asian Americans, or other minorities found to be disadvantaged by the SBA, are socially and economically disadvantaged individuals. You must require applicants to submit a signed, notarized certification that each presumptively disadvantaged owner is, in fact, socially and economically disadvantaged.

(2)(i) You must require each individual owner of a firm applying to participate as a DBE, whose ownership and control are relied upon for DBE certification to certify that he or she has a personal net worth that does not exceed \$1.32 million.

(ii) You must require each individual who makes this certification to support it with a signed, notarized statement of personal net worth, with appropriate supporting documentation. This statement and documentation must not be unduly lengthy, burdensome, or intrusive.

(iii) In determining an individual's net worth, you must observe the following requirements:

(A) Exclude an individual's ownership interest in the applicant firm;

(B) Exclude the individual's equity in his or her primary residence (except any portion of such equity that is attributable to excessive withdrawals from the applicant firm).

(C) Do not use a contingent liability to reduce an individual's net worth.

(D) With respect to assets held in vested pension plans, Individual Retirement Accounts, 401(k) accounts, or other retirement savings or investment programs in which the assets cannot be distributed to the individual at the present time without significant adverse tax or interest consequences, include only the present value of such assets, less the tax and interest penalties that would accrue if the asset were distributed at the present time.

(iv) Notwithstanding any provision of Federal or state law, you must not release an individual's personal net worth statement nor any documents pertaining to it to any third party without the written consent of the submitter. Provided, that you must transmit this information to DOT in any certification appeal proceeding under section 26.89 of this part or to any other state to which the individual's firm has applied for certification under § 26.85 of this part.

(b) *Rebuttal of presumption of disadvantage.* (1) If the statement of personal net worth that an individual submits under paragraph (a)(2) of this section shows that the individual's personal net worth exceeds \$1.32 million, the individual's presumption of economic disadvantage is rebutted. You are not required to have a proceeding under paragraph (b)(2) of this section in order to rebut the presumption of economic disadvantage in this case.

(2) If you have a reasonable basis to believe that an individual who is a member of one of the designated groups is not, in fact, socially and/or economically disadvantaged you may, at any time, start a proceeding to determine whether the presumption should be regarded as rebutted with respect to that individual. Your proceeding must follow the procedures of § 26.87.

(3) In such a proceeding, you have the burden of demonstrating, by a preponderance of the evidence, that the individual is not socially and economically disadvantaged. You may require the individual to produce information relevant to the determination of his or her disadvantage.

(4) When an individual's presumption of social and/or economic disadvantage has been rebutted, his or her ownership and control of the firm in question cannot be used for purposes of DBE eligibility under this subpart unless and until he or she makes an individual showing of social and/or economic disadvantage. If the basis for rebutting the presumption is a determination that the individual's personal net worth exceeds \$1.32 million, the individual is no longer eligible for participation in the program and cannot regain eligibility by making an individual showing of disadvantage.

(c) [Reserved]

(d) *Individual determinations of social and economic disadvantage.* Firms owned and controlled by individuals who are not presumed to be socially and economically disadvantaged (including individuals whose presumed disadvantage has been rebutted) may apply for DBE certification. You must make a case-by-case determination of whether each individual whose ownership and control are relied upon for DBE certification is socially and economically disadvantaged. In such a proceeding, the applicant firm has the burden of demonstrating to you, by a preponderance of the evidence, that the individuals who own and control it are socially and economically disadvantaged. An individual whose personal net worth exceeds \$1.32 million shall not be deemed to be economically disadvantaged. In making these determinations, use the guidance found in Appendix E of this part. You must require that applicants provide sufficient information to permit determinations under the guidance of Appendix E of this part.

[64 FR 5126, Feb. 2, 1999, as amended at 64 FR 34570, June 28, 1999; 68 FR 35554, June 16, 2003; 76 FR 5099, Jan. 28, 2011]

§ 26.69 What rules govern determinations of ownership?

(a) In determining whether the socially and economically disadvantaged participants in a firm own the firm, you must consider all the facts in the record, viewed as a whole.

(b) To be an eligible DBE, a firm must be at least 51 percent owned by socially and economically disadvantaged individuals.

(1) In the case of a corporation, such individuals must own at least 51 percent of the each class of voting stock outstanding and 51 percent of the aggregate of all stock outstanding.

(2) In the case of a partnership, 51 percent of each class of partnership interest must be owned by socially and economically disadvantaged individuals. Such ownership must be reflected in the firm's partnership agreement.

(3) In the case of a limited liability company, at least 51 percent of each class of member interest must be owned by socially and economically disadvantaged individuals.

(c) The firm's ownership by socially and economically disadvantaged individuals must be real, substantial, and continuing, going beyond pro forma ownership of the firm as reflected in ownership documents. The disadvantaged owners must enjoy the customary incidents of ownership, and share in the risks and profits commensurate with their ownership interests, as demonstrated by the substance, not merely the form, of arrangements.

(d) All securities that constitute ownership of a firm shall be held directly by disadvantaged persons. Except as provided in this paragraph (d), no securities or assets held in trust, or by any guardian for a minor, are considered as held by disadvantaged persons in determining the ownership of a firm. However, securities or assets held in trust are regarded as held by a disadvantaged individual for purposes of determining ownership of the firm, if—

(1) The beneficial owner of securities or assets held in trust is a disadvantaged individual, and the trustee is the same or another such individual; or

(2) The beneficial owner of a trust is a disadvantaged individual who, rather than the trustee, exercises effective control over the management, policy-making, and daily operational activities of the firm. Assets held in a revocable living trust may be counted only in the situation where the same disadvantaged individual is the sole grantor, beneficiary, and trustee.

(e) The contributions of capital or expertise by the socially and economically disadvantaged owners to acquire their ownership interests must be real and substantial. Examples of insufficient

contributions include a promise to contribute capital, an unsecured note payable to the firm or an owner who is not a disadvantaged individual, or mere participation in a firm's activities as an employee. Debt instruments from financial institutions or other organizations that lend funds in the normal course of their business do not render a firm ineligible, even if the debtor's ownership interest is security for the loan.

(f) The following requirements apply to situations in which expertise is relied upon as part of a disadvantaged owner's contribution to acquire ownership:

(1) The owner's expertise must be—

(i) In a specialized field;

(ii) Of outstanding quality;

(iii) In areas critical to the firm's operations;

(iv) Indispensable to the firm's potential success;

(v) Specific to the type of work the firm performs; and

(vi) Documented in the records of the firm. These records must clearly show the contribution of expertise and its value to the firm.

(2) The individual whose expertise is relied upon must have a significant financial investment in the firm.

(g) You must always deem as held by a socially and economically disadvantaged individual, for purposes of determining ownership, all interests in a business or other assets obtained by the individual—

(1) As the result of a final property settlement or court order in a divorce or legal separation, provided that no term or condition of the agreement or divorce decree is inconsistent with this section; or

(2) Through inheritance, or otherwise because of the death of the former owner.

(h)(1) You must presume as not being held by a socially and economically disadvantaged individual, for purposes of determining ownership, all interests in a business or other assets obtained by the individual as the result of a gift, or transfer without adequate consideration, from any non-disadvantaged individual or non-DBE firm who is—

(i) Involved in the same firm for which the individual is seeking certification, or an affiliate of that firm;

(ii) Involved in the same or a similar line of business; or

(iii) Engaged in an ongoing business relationship with the firm, or an affiliate of the firm, for which the individual is seeking certification.

(2) To overcome this presumption and permit the interests or assets to be counted, the disadvantaged individual must demonstrate to you, by clear and convincing evidence, that

(i) The gift or transfer to the disadvantaged individual was made for reasons other than obtaining certification as a DBE; and

(ii) The disadvantaged individual actually controls the management, policy, and operations of the firm, notwithstanding the continuing participation of a non-disadvantaged individual who provided the gift or transfer.

(i) You must apply the following rules in situations in which marital assets form a basis for ownership of a firm:

(1) When marital assets (other than the assets of the business in question), held jointly or as community property by both spouses, are used to acquire the ownership interest asserted by one spouse, you must deem the ownership interest in the firm to have been acquired by that spouse with his or her own individual resources, provided that the other spouse irrevocably renounces and transfers all rights in the ownership interest in the manner sanctioned by the laws of the state in which either spouse or the firm is domiciled. You do not count a greater portion of joint or community property assets toward ownership than state law would recognize as belonging to the socially and economically disadvantaged owner of the applicant firm.

(2) A copy of the document legally transferring and renouncing the other spouse's rights in the jointly owned or community assets used to acquire an ownership interest in the firm must be included as part of the firm's application for DBE certification.

(j) You may consider the following factors in determining the ownership of a firm. However, you must not regard a contribution of capital as failing to be real and substantial, or find a firm ineligible, solely because—

(1) A socially and economically disadvantaged individual acquired his or her ownership interest as the result of a gift, or transfer without adequate consideration, other than the types set forth in paragraph (h) of this section;

(2) There is a provision for the co-signature of a spouse who is not a socially and economically disadvantaged individual on financing agreements, contracts for the purchase or sale of real or personal property, bank signature cards, or other documents; or

(3) Ownership of the firm in question or its assets is transferred for adequate consideration from a spouse who is not a socially and economically disadvantaged individual to a spouse who is such an individual. In this case, you must give particularly close and careful scrutiny to the ownership and control of a firm to ensure that it is owned and controlled, in substance as well as in form, by a socially and economically disadvantaged individual.

§ 26.71 What rules govern determinations concerning control?

(a) In determining whether socially and economically disadvantaged owners control a firm, you must consider all the facts in the record, viewed as a whole.

(b) Only an independent business may be certified as a DBE. An independent business is one the viability of which does not depend on its relationship with another firm or firms.

(1) In determining whether a potential DBE is an independent business, you must scrutinize relationships with non-DBE firms, in such areas as personnel, facilities, equipment, financial and/or bonding support, and other resources.

(2) You must consider whether present or recent employer/employee relationships between the disadvantaged owner(s) of the potential DBE and non-DBE firms or persons associated with non-DBE firms compromise the independence of the potential DBE firm.

(3) You must examine the firm's relationships with prime contractors to determine whether a pattern of exclusive or primary dealings with a prime contractor compromises the independence of the potential DBE firm.

(4) In considering factors related to the independence of a potential DBE firm, you must consider the consistency of relationships between the potential DBE and non-DBE firms with normal industry practice.

(c) A DBE firm must not be subject to any formal or informal restrictions which limit the customary discretion of the socially and economically disadvantaged owners. There can be no restrictions through corporate charter provisions, by-law provisions, contracts or any other formal or informal devices (e.g., cumulative voting rights, voting powers attached to different classes of stock, employment contracts, requirements for concurrence by non-disadvantaged partners, conditions precedent or subsequent, executory agreements, voting trusts, restrictions on or assignments of voting rights) that prevent the socially and economically disadvantaged owners, without the cooperation or vote of any non-disadvantaged individual, from making any business decision of the firm. This paragraph does not preclude a spousal co-signature on documents as provided for in § 26.69(j)(2).

(d) The socially and economically disadvantaged owners must possess the power to direct or cause the direction of the management and policies of the firm and to make day-to-day as well as long-term decisions on matters of management, policy and operations.

(1) A disadvantaged owner must hold the highest officer position in the company (e.g., chief executive officer or president).

(2) In a corporation, disadvantaged owners must control the board of directors.

(3) In a partnership, one or more disadvantaged owners must serve as general partners, with control over all partnership decisions.

(e) Individuals who are not socially and economically disadvantaged may be involved in a DBE firm as owners, managers, employees, stockholders, officers, and/or directors. Such individuals must not, however, possess or exercise the power to control the firm, or be disproportionately responsible for the operation of the firm.

(f) The socially and economically disadvantaged owners of the firm may delegate various areas of the management, policymaking, or daily operations of the firm to other participants in the firm, regardless of whether these participants are socially and economically disadvantaged individuals. Such delegations of authority must be revocable, and the socially and economically disadvantaged owners must retain the power to hire and fire any person to whom such authority is delegated. The managerial role of the socially and economically disadvantaged owners in the firm's overall affairs must be such that the recipient can reasonably conclude that the socially and economically disadvantaged owners actually exercise control over the firm's operations, management, and policy.

(g) The socially and economically disadvantaged owners must have an overall understanding of, and managerial and technical competence and experience directly related to, the type of business in which the firm is engaged and the firm's operations. The socially and economically disadvantaged owners are not required to have experience or expertise in every critical area of the firm's operations, or to have greater experience or expertise in a given field than managers or key employees. The socially and economically disadvantaged owners must have the ability to intelligently and critically evaluate information presented by other participants in the firm's activities and to use this information to make independent decisions concerning the firm's daily operations, management, and policymaking. Generally, expertise limited to office management, administration, or bookkeeping functions unrelated to the principal business activities of the firm is insufficient to demonstrate control.

(h) If state or local law requires the persons to have a particular license or other credential in order to own and/or control a certain type of firm, then the socially and economically disadvantaged persons who own and control a potential DBE firm of that type must possess the required license or credential. If state or local law does not require such a person to have such a

license or credential to own and/or control a firm, you must not deny certification solely on the ground that the person lacks the license or credential. However, you may take into account the absence of the license or credential as one factor in determining whether the socially and economically disadvantaged owners actually control the firm.

(i)(1) You may consider differences in remuneration between the socially and economically disadvantaged owners and other participants in the firm in determining whether to certify a firm as a DBE. Such consideration shall be in the context of the duties of the persons involved, normal industry practices, the firm's policy and practice concerning reinvestment of income, and any other explanations for the differences proffered by the firm. You may determine that a firm is controlled by its socially and economically disadvantaged owner although that owner's remuneration is lower than that of some other participants in the firm.

(2) In a case where a non-disadvantaged individual formerly controlled the firm, and a socially and economically disadvantaged individual now controls it, you may consider a difference between the remuneration of the former and current controller of the firm as a factor in determining who controls the firm, particularly when the non-disadvantaged individual remains involved with the firm and continues to receive greater compensation than the disadvantaged individual.

(j) In order to be viewed as controlling a firm, a socially and economically disadvantaged owner cannot engage in outside employment or other business interests that conflict with the management of the firm or prevent the individual from devoting sufficient time and attention to the affairs of the firm to control its activities. For example, absentee ownership of a business and part-time work in a full-time firm are not viewed as constituting control. However, an individual could be viewed as controlling a part-time business that operates only on evenings and/or weekends, if the individual controls it all the time it is operating.

(k)(1) A socially and economically disadvantaged individual may control a firm even though one or more of the individual's immediate family members (who themselves are not socially and economically disadvantaged individuals) participate in the firm as a manager, employee, owner, or in another capacity. Except as otherwise provided in this paragraph, you must make a judgment about the control the socially and economically disadvantaged owner exercises vis-a-vis other persons involved in the business as you do in other situations, without regard to whether or not the other persons are immediate family members.

(2) If you cannot determine that the socially and economically disadvantaged owners—as distinct from the family as a whole—control the firm, then the socially and economically disadvantaged owners have failed to carry their burden of proof concerning control, even though they may participate significantly in the firm's activities.

(l) Where a firm was formerly owned and/or controlled by a non-disadvantaged individual (whether or not an immediate family member), ownership and/or control were transferred to a socially and economically disadvantaged individual, and the non-disadvantaged individual remains involved with the firm in any capacity, the disadvantaged individual now owning the firm must demonstrate to you, by clear and convincing evidence, that:

(1) The transfer of ownership and/or control to the disadvantaged individual was made for reasons other than obtaining certification as a DBE; and

(2) The disadvantaged individual actually controls the management, policy, and operations of the firm, notwithstanding the continuing participation of a non-disadvantaged individual who formerly owned and/or controlled the firm.

(m) In determining whether a firm is controlled by its socially and economically disadvantaged owners, you may consider whether the firm owns equipment necessary to perform its work. However, you must not determine that a firm is not controlled by socially and economically disadvantaged individuals solely because the firm leases, rather than owns, such equipment,

where leasing equipment is a normal industry practice and the lease does not involve a relationship with a prime contractor or other party that compromises the independence of the firm.

(n) You must grant certification to a firm only for specific types of work in which the socially and economically disadvantaged owners have the ability to control the firm. To become certified in an additional type of work, the firm need demonstrate to you only that its socially and economically disadvantaged owners are able to control the firm with respect to that type of work. You must not require that the firm be recertified or submit a new application for certification, but you must verify the disadvantaged owner's control of the firm in the additional type of work.

(1) The types of work a firm can perform (whether on initial certification or when a new type of work is added) must be described in terms of the most specific available NAICS code for that type of work. If you choose, you may also, in addition to applying the appropriate NAICS code, apply a descriptor from a classification scheme of equivalent detail and specificity. A correct NAICS code is one that describes, as specifically as possible, the principal goods or services which the firm would provide to DOT recipients. Multiple NAICS codes may be assigned where appropriate. Program participants must rely on, and not depart from, the plain meaning of NAICS code descriptions in determining the scope of a firm's certification. If your Directory does not list types of work for any firm in a manner consistent with this paragraph (a)(1), you must update the Directory entry for that firm to meet the requirements of this paragraph (a)(1) by August 28, 2011.

(2) Firms and recipients must check carefully to make sure that the NAICS codes cited in a certification are kept up-to-date and accurately reflect work which the UCP has determined the firm's owners can control. The firm bears the burden of providing detailed company information the certifying agency needs to make an appropriate NAICS code designation.

(3) If a firm believes that there is not a NAICS code that fully or clearly describes the type(s) of work in which it is seeking to be certified as a DBE, the firm may request that the certifying agency, in its certification documentation, supplement the assigned NAICS code(s) with a clear, specific, and detailed narrative description of the type of work in which the firm is certified. A vague, general, or confusing description is not sufficient for this purpose, and recipients should not rely on such a description in determining whether a firm's participation can be counted toward DBE goals.

(4) A certifier is not precluded from changing a certification classification or description if there is a factual basis in the record. However, certifiers must not make after-the-fact statements about the scope of a certification, not supported by evidence in the record of the certification action.

(o) A business operating under a franchise or license agreement may be certified if it meets the standards in this subpart and the franchiser or licensor is not affiliated with the franchisee or licensee. In determining whether affiliation exists, you should generally not consider the restraints relating to standardized quality, advertising, accounting format, and other provisions imposed on the franchisee or licensee by the franchise agreement or license, provided that the franchisee or licensee has the right to profit from its efforts and bears the risk of loss commensurate with ownership. Alternatively, even though a franchisee or licensee may not be controlled by virtue of such provisions in the franchise agreement or license, affiliation could arise through other means, such as common management or excessive restrictions on the sale or transfer of the franchise interest or license.

(p) In order for a partnership to be controlled by socially and economically disadvantaged individuals, any non-disadvantaged partners must not have the power, without the specific written concurrence of the socially and economically disadvantaged partner(s), to contractually bind the partnership or subject the partnership to contract or tort liability.

(q) The socially and economically disadvantaged individuals controlling a firm may use an employee leasing company. The use of such a company does not preclude the socially and economically disadvantaged individuals from controlling their firm if they continue to maintain an employer-employee relationship with the leased employees. This includes being responsible for

hiring, firing, training, assigning, and otherwise controlling the on-the-job activities of the employees, as well as ultimate responsibility for wage and tax obligations related to the employees.

[64 FR 5126, Feb. 2, 1999, as amended at 76 FR 5099, Jan. 28, 2011]

§ 26.73 What are other rules affecting certification?

(a)(1) Consideration of whether a firm performs a commercially useful function or is a regular dealer pertains solely to counting toward DBE goals the participation of firms that have already been certified as DBEs. Except as provided in paragraph (a)(2) of this section, you must not consider commercially useful function issues in any way in making decisions about whether to certify a firm as a DBE.

(2) You may consider, in making certification decisions, whether a firm has exhibited a pattern of conduct indicating its involvement in attempts to evade or subvert the intent or requirements of the DBE program.

(b)(1) You must evaluate the eligibility of a firm on the basis of present circumstances. You must not refuse to certify a firm based solely on historical information indicating a lack of ownership or control of the firm by socially and economically disadvantaged individuals at some time in the past, if the firm currently meets the ownership and control standards of this part.

(2) You must not refuse to certify a firm solely on the basis that it is a newly formed firm, has not completed projects or contracts at the time of its application, has not yet realized profits from its activities, or has not demonstrated a potential for success. If the firm meets disadvantaged, size, ownership, and control requirements of this Part, the firm is eligible for certification.

(c) DBE firms and firms seeking DBE certification shall cooperate fully with your requests (and DOT requests) for information relevant to the certification process. Failure or refusal to provide such information is a ground for a denial or removal of certification.

(d) Only firms organized for profit may be eligible DBEs. Not-for-profit organizations, even though controlled by socially and economically disadvantaged individuals, are not eligible to be certified as DBEs.

(e) An eligible DBE firm must be owned by individuals who are socially and economically disadvantaged. Except as provided in this paragraph, a firm that is not owned by such individuals, but instead is owned by another firm—even a DBE firm—cannot be an eligible DBE.

(1) If socially and economically disadvantaged individuals own and control a firm through a parent or holding company, established for tax, capitalization or other purposes consistent with industry practice, and the parent or holding company in turn owns and controls an operating subsidiary, you may certify the subsidiary if it otherwise meets all requirements of this subpart. In this situation, the individual owners and controllers of the parent or holding company are deemed to control the subsidiary through the parent or holding company.

(2) You may certify such a subsidiary only if there is cumulatively 51 percent ownership of the subsidiary by socially and economically disadvantaged individuals. The following examples illustrate how this cumulative ownership provision works:

Example 1: Socially and economically disadvantaged individuals own 100 percent of a holding company, which has a wholly-owned subsidiary. The subsidiary may be certified, if it meets all other requirements.

Example 2: Disadvantaged individuals own 100 percent of the holding company, which owns 51 percent of a subsidiary. The subsidiary may be certified, if all other requirements are met.

Example 3: Disadvantaged individuals own 80 percent of the holding company, which in turn owns 70 percent of a subsidiary. In this case, the cumulative ownership of the subsidiary by disadvantaged individuals is 56 percent (80 percent of the 70 percent). This is more than 51 percent, so you may certify the subsidiary, if all other requirements are met.

Example 4: Same as Example 2 or 3, but someone other than the socially and economically disadvantaged owners of the parent or holding company controls the subsidiary. Even though the subsidiary is owned by disadvantaged individuals, through the holding or parent company, you cannot certify it because it fails to meet control requirements.

Example 5: Disadvantaged individuals own 60 percent of the holding company, which in turn owns 51 percent of a subsidiary. In this case, the cumulative ownership of the subsidiary by disadvantaged individuals is about 31 percent. This is less than 51 percent, so you cannot certify the subsidiary.

Example 6: The holding company, in addition to the subsidiary seeking certification, owns several other companies. The combined gross receipts of the holding companies and its subsidiaries are greater than the size standard for the subsidiary seeking certification and/or the gross receipts cap of § 26.65(b). Under the rules concerning affiliation, the subsidiary fails to meet the size standard and cannot be certified.

(f) Recognition of a business as a separate entity for tax or corporate purposes is not necessarily sufficient to demonstrate that a firm is an independent business, owned and controlled by socially and economically disadvantaged individuals.

(g) You must not require a DBE firm to be prequalified as a condition for certification unless the recipient requires all firms that participate in its contracts and subcontracts to be prequalified.

(h) A firm that is owned by an Indian tribe or Native Hawaiian organization, rather than by Indians or Native Hawaiians as individuals, may be eligible for certification. Such a firm must meet the size standards of § 26.35. Such a firm must be controlled by socially and economically disadvantaged individuals, as provided in § 26.71.

(i) The following special rules apply to the certification of firms related to Alaska Native Corporations (ANCs).

(1) Notwithstanding any other provisions of this subpart, a direct or indirect subsidiary corporation, joint venture, or partnership entity of an ANC is eligible for certification as a DBE if it meets all of the following requirements:

(i) The Settlement Common Stock of the underlying ANC and other stock of the ANC held by holders of the Settlement Common Stock and by Natives and descendants of Natives represents a majority of both the total equity of the ANC and the total voting power of the corporation for purposes of electing directors;

(ii) The shares of stock or other units of common ownership interest in the subsidiary, joint venture, or partnership entity held by the ANC and by holders of its Settlement Common Stock represent a majority of both the total equity of the entity and the total voting power of the entity for the purpose of electing directors, the general partner, or principal officers; and

(iii) The subsidiary, joint venture, or partnership entity has been certified by the Small Business Administration under the 8(a) or small disadvantaged business program.

(2) As a recipient to whom an ANC-related entity applies for certification, you do not use the DOT uniform application form (see Appendix F of this part). You must obtain from the firm documentation sufficient to demonstrate that entity meets the requirements of paragraph (i)(1) of this section. You must also obtain sufficient information about the firm to allow you to administer your program (e.g., information that would appear in your DBE Directory).

(3) If an ANC-related firm does not meet all the conditions of paragraph (i)(1) of this section, then it must meet the requirements of paragraph (h) of this section in order to be certified, on the same basis as firms owned by Indian Tribes or Native Hawaiian Organizations.

[64 FR 5126, Feb. 2, 1999, as amended at 68 FR 35555, June 16, 2003; 76 FR 5099, Jan. 28, 2011]

Subpart E—Certification Procedures

§ 26.81 What are the requirements for Unified Certification Programs?

(a) You and all other DOT recipients in your state must participate in a Unified Certification Program (UCP).

(1) Within three years of March 4, 1999, you and the other recipients in your state must sign an agreement establishing the UCP for that state and submit the agreement to the Secretary for approval. The Secretary may, on the basis of extenuating circumstances shown by the recipients in the state, extend this deadline for no more than one additional year.

(2) The agreement must provide for the establishment of a UCP meeting all the requirements of this section. The agreement must specify that the UCP will follow all certification procedures and standards of this part, on the same basis as recipients; that the UCP shall cooperate fully with oversight, review, and monitoring activities of DOT and its operating administrations; and that the UCP shall implement DOT directives and guidance concerning certification matters. The agreement shall also commit recipients to ensuring that the UCP has sufficient resources and expertise to carry out the requirements of this part. The agreement shall include an implementation schedule ensuring that the UCP is fully operational no later than 18 months following the approval of the agreement by the Secretary.

(3) Subject to approval by the Secretary, the UCP in each state may take any form acceptable to the recipients in that state.

(4) The Secretary shall review the UCP and approve it, disapprove it, or remand it to the recipients in the state for revisions. A complete agreement which is not disapproved or remanded within 180 days of its receipt is deemed to be accepted.

(5) If you and the other recipients in your state fail to meet the deadlines set forth in this paragraph (a), you shall have the opportunity to make an explanation to the Secretary why a deadline could not be met and why meeting the deadline was beyond your control. If you fail to make such an explanation, or the explanation does not justify the failure to meet the deadline, the Secretary shall direct you to complete the required action by a date certain. If you and the other recipients fail to carry out this direction in a timely manner, you are collectively in noncompliance with this part.

(b) The UCP shall make all certification decisions on behalf of all DOT recipients in the state with respect to participation in the DOT DBE Program.

(1) Certification decisions by the UCP shall be binding on all DOT recipients within the state.

(2) The UCP shall provide “one-stop shopping” to applicants for certification, such that an applicant is required to apply only once for a DBE certification that will be honored by all recipients in the state.

(3) All obligations of recipients with respect to certification and nondiscrimination must be carried out by UCPs, and recipients may use only UCPs that comply with the certification and nondiscrimination requirements of this part.

(c) All certifications by UCPs shall be pre-certifications; i.e., certifications that have been made final before the due date for bids or offers on a contract on which a firm seeks to participate as a DBE.

(d) A UCP is not required to process an application for certification from a firm having its principal place of business outside the state if the firm is not certified by the UCP in the state in which it maintains its principal place of business. The "home state" UCP shall share its information and documents concerning the firm with other UCPs that are considering the firm's application.

(e) Subject to DOT approval as provided in this section, the recipients in two or more states may form a regional UCP. UCPs may also enter into written reciprocity agreements with other UCPs. Such an agreement shall outline the specific responsibilities of each participant. A UCP may accept the certification of any other UCP or DOT recipient.

(f) Pending the establishment of UCPs meeting the requirements of this section, you may enter into agreements with other recipients, on a regional or inter-jurisdictional basis, to perform certification functions required by this part. You may also grant reciprocity to other recipient's certification decisions.

(g) Each UCP shall maintain a unified DBE directory containing, for all firms certified by the UCP (including those from other states certified under the provisions of this part), the information required by § 26.31. The UCP shall make the directory available to the public electronically, on the internet, as well as in print. The UCP shall update the electronic version of the directory by including additions, deletions, and other changes as soon as they are made and shall revise the print version of the Directory at least once a year.

(h) Except as otherwise specified in this section, all provisions of this subpart and subpart D of this part pertaining to recipients also apply to UCPs.

[64 FR 5126, Feb. 2, 1999, as amended at 76 FR 5100, Jan. 28, 2011]

§ 26.83 What procedures do recipients follow in making certification decisions?

(a) You must ensure that only firms certified as eligible DBEs under this section participate as DBEs in your program.

(b) You must determine the eligibility of firms as DBEs consistent with the standards of subpart D of this part. When a UCP is formed, the UCP must meet all the requirements of subpart D of this part and this subpart that recipients are required to meet.

(c) You must take all the following steps in determining whether a DBE firm meets the standards of subpart D of this part:

(1) Perform an on-site visit to the offices of the firm. You must interview the principal officers of the firm and review their résumés and/or work histories. You must also perform an on-site visit to job sites if there are such sites on which the firm is working at the time of the eligibility investigation in your jurisdiction or local area. You may rely upon the site visit report of any other recipient with respect to a firm applying for certification;

(2) If the firm is a corporation, analyze the ownership of stock in the firm;

(3) Analyze the bonding and financial capacity of the firm;

(4) Determine the work history of the firm, including contracts it has received and work it has completed;

(5) Obtain a statement from the firm of the type of work it prefers to perform as part of the DBE program and its preferred locations for performing the work, if any;

(6) Obtain or compile a list of the equipment owned by or available to the firm and the licenses the firm and its key personnel possess to perform the work it seeks to do as part of the DBE program;

- (7) Require potential DBEs to complete and submit an appropriate application form, unless the potential DBE is an SBA certified firm applying pursuant to the DOT/SBA MOU.
- (i) You must use the application form provided in Appendix F to this part without change or revision. However, you may provide in your DBE program, with the approval of the concerned operating administration, for supplementing the form by requesting additional information not inconsistent with this part.
- (ii) You must make sure that the applicant attests to the accuracy and truthfulness of the information on the application form. This shall be done either in the form of an affidavit sworn to by the applicant before a person who is authorized by state law to administer oaths or in the form of an unsworn declaration executed under penalty of perjury of the laws of the United States.
- (iii) You must review all information on the form prior to making a decision about the eligibility of the firm.
- (d) When another recipient, in connection with its consideration of the eligibility of a firm, makes a written request for certification information you have obtained about that firm (e.g., including application materials or the report of a site visit, if you have made one to the firm), you must promptly make the information available to the other recipient.
- (e) [Reserved]
- (f) Subject to the approval of the concerned operating administration as part of your DBE program, you may impose a reasonable application fee for certification. Fee waivers shall be made in appropriate cases.
- (g) You must safeguard from disclosure to unauthorized persons information gathered as part of the certification process that may reasonably be regarded as proprietary or other confidential business information, consistent with applicable Federal, state, and local law.
- (h) Once you have certified a DBE, it shall remain certified until and unless you have removed its certification, in whole or in part, through the procedures of section 26.87. You may not require DBEs to reapply for certification or require "recertification" of currently certified firms. However, you may conduct a certification review of a certified DBE firm, including a new on-site review, three years from the date of the firm's most recent certification, or sooner if appropriate in light of changed circumstances (e.g., of the kind requiring notice under paragraph (i) of this section), a complaint, or other information concerning the firm's eligibility. If you have grounds to question the firm's eligibility, you may conduct an on-site review on an unannounced basis, at the firm's offices and jobsites.
- (i) If you are a DBE, you must inform the recipient or UCP in writing of any change in circumstances affecting your ability to meet size, disadvantaged status, ownership, or control requirements of this part or any material change in the information provided in your application form.
- (1) Changes in management responsibility among members of a limited liability company are covered by this requirement.

- (2) You must attach supporting documentation describing in detail the nature of such changes.
- (3) The notice must take the form of an affidavit sworn to by the applicant before a person who is authorized by state law to administer oaths or of an unsworn declaration executed under penalty of perjury of the laws of the United States. You must provide the written notification within 30 days of the occurrence of the change. If you fail to make timely notification of such a change, you will be deemed to have failed to cooperate under § 26.109(c).
- (j) If you are a DBE, you must provide to the recipient, every year on the anniversary of the date of your certification, an affidavit sworn to by the firm's owners before a person who is authorized by state law to administer oaths or an unsworn declaration executed under penalty of perjury of the laws of the United States. This affidavit must affirm that there have been no changes in the firm's circumstances affecting its ability to meet size, disadvantaged status, ownership, or control requirements of this part or any material changes in the information provided in its application form, except for changes about which you have notified the recipient under paragraph (i) of this section. The affidavit shall specifically affirm that your firm continues to meet SBA business size criteria and the overall gross receipts cap of this part, documenting this affirmation with supporting documentation of your firm's size and gross receipts. If you fail to provide this affidavit in a timely manner, you will be deemed to have failed to cooperate under § 26.109(c).
- (k) If you are a recipient, you must make decisions on applications for certification within 90 days of receiving from the applicant firm all information required under this part. You may extend this time period once, for no more than an additional 60 days, upon written notice to the firm, explaining fully and specifically the reasons for the extension. You may establish a different time frame in your DBE program, upon a showing that this time frame is not feasible, and subject to the approval of the concerned operating administration. Your failure to make a decision by the applicable deadline under this paragraph is deemed a constructive denial of the application, on the basis of which the firm may appeal to DOT under § 26.89.
- (l) As a recipient or UCP, you must advise each applicant within 30 days from your receipt of the application whether the application is complete and suitable for evaluation and, if not, what additional information or action is required.
- (m) Except as otherwise provided in this paragraph, if an applicant for DBE certification withdraws its application before you have issued a decision on the application, the applicant can resubmit the application at any time. As a recipient or UCP, you may not apply the waiting period provided under § 26.86(c) of this part before allowing the applicant to resubmit its application. However, you may place the reapplication at the "end of the line," behind other applications that have been made since the firm's previous application was withdrawn. You may also apply the waiting period provided under § 26.86(c) of this part to a firm that has established a pattern of frequently withdrawing applications before you make a decision.

[64 FR 5126, Feb. 2, 1999, as amended at 68 FR 35555, June 16, 2003; 76 FR 5100, Jan. 28, 2011]

§ 26.85 Interstate certification.

- (a) This section applies with respect to any firm that is currently certified in its home state.
- (b) When a firm currently certified in its home state ("State A") applies to another State ("State B") for DBE certification, State B may, at its discretion, accept State A's certification and certify the firm, without further procedures.
- (1) To obtain certification in this manner, the firm must provide to State B a copy of its certification notice from State A.
- (2) Before certifying the firm, State B must confirm that the firm has a current valid certification from State A. State B can do so by reviewing State A's electronic directory or obtaining written confirmation from State A.

(c) In any situation in which State B chooses not to accept State A's certification of a firm as provided in paragraph (b) of this section, as the applicant firm you must provide the information in paragraphs (c)(1) through (4) of this section to State B.

(1) You must provide to State B a complete copy of the application form, all supporting documents, and any other information you have submitted to State A or any other state related to your firm's certification. This includes affidavits of no change (see § 26.83(j)) and any notices of changes (see § 26.83(i)) that you have submitted to State A, as well as any correspondence you have had with State A's UCP or any other recipient concerning your application or status as a DBE firm.

(2) You must also provide to State B any notices or correspondence from states other than State A relating to your status as an applicant or certified DBE in those states. For example, if you have been denied certification or decertified in State C, or subject to a decertification action there, you must inform State B of this fact and provide all documentation concerning this action to State B.

(3) If you have filed a certification appeal with DOT (see § 26.89), you must inform State B of the fact and provide your letter of appeal and DOT's response to State B.

(4) You must submit an affidavit sworn to by the firm's owners before a person who is authorized by State law to administer oaths or an unsworn declaration executed under penalty of perjury of the laws of the United States.

(i) This affidavit must affirm that you have submitted all the information required by 49 CFR 26.85(c) and the information is complete and, in the case of the information required by § 26.85(c)(1), is an identical copy of the information submitted to State A.

(ii) If the on-site report from State A supporting your certification in State A is more than three years old, as of the date of your application to State B, State B may require that your affidavit also affirm that the facts in the on-site report remain true and correct.

(d) As State B, when you receive from an applicant firm all the information required by paragraph (c) of this section, you must take the following actions:

(1) Within seven days contact State A and request a copy of the site visit review report for the firm (see § 26.83(c)(1)), any updates to the site visit review, and any evaluation of the firm based on the site visit. As State A, you must transmit this information to State B within seven days of receiving the request. A pattern by State B of not making such requests in a timely manner or by "State A" or any other State of not complying with such requests in a timely manner is noncompliance with this Part.

(2) Determine whether there is good cause to believe that State A's certification of the firm is erroneous or should not apply in your State. Reasons for making such a determination may include the following:

(i) Evidence that State A's certification was obtained by fraud;

(ii) New information, not available to State A at the time of its certification, showing that the firm does not meet all eligibility criteria;

(iii) State A's certification was factually erroneous or was inconsistent with the requirements of this part;

(iv) The State law of State B requires a result different from that of the State law of State A.

(v) The information provided by the applicant firm did not meet the requirements of paragraph (c) of this section.

(3) If, as State B, unless you have determined that there is good cause to believe that State A's certification is erroneous or should not apply in your State, you must, no later than 60 days from the date on which you received from the applicant firm all the information required by paragraph (c) of this section, send to the applicant firm a notice that it is certified and place the firm on your directory of certified firms.

(4) If, as State B, you have determined that there is good cause to believe that State A's certification is erroneous or should not apply in your State, you must, no later than 60 days from the date on which you received from the applicant firm all the information required by paragraph (c) of this section, send to the applicant firm a notice stating the reasons for your determination.

(i) This notice must state with particularity the specific reasons why State B believes that the firm does not meet the requirements of this Part for DBE eligibility and must offer the firm an opportunity to respond to State B with respect to these reasons.

(ii) The firm may elect to respond in writing, to request an in-person meeting with State B's decision maker to discuss State B's objections to the firm's eligibility, or both. If the firm requests a meeting, as State B you must schedule the meeting to take place within 30 days of receiving the firm's request.

(iii) The firm bears the burden of demonstrating, by a preponderance of evidence, that it meets the requirements of this Part with respect to the particularized issues raised by State B's notice. The firm is not otherwise responsible for further demonstrating its eligibility to State B.

(iv) The decision maker for State B must be an individual who is thoroughly familiar with the provisions of this Part concerning certification.

(v) State B must issue a written decision within 30 days of the receipt of the written response from the firm or the meeting with the decision maker, whichever is later.

(vi) The firm's application for certification is stayed pending the outcome of this process.

(vii) A decision under this paragraph (d)(4) may be appealed to the Departmental Office of Civil Rights under s§ 26.89 of this part.

(e) As State B, if you have not received from State A a copy of the site visit review report by a date 14 days after you have made a timely request for it, you may hold action required by paragraphs (d)(2) through (4) of this section in abeyance pending receipt of the site visit review report. In this event, you must, no later than 30 days from the date on which you received from an applicant firm all the information required by paragraph (c) of this section, notify the firm in writing of the delay in the process and the reason for it.

(f)(1) As a UCP, when you deny a firm's application, reject the application of a firm certified in State A or any other State in which the firm is certified, through the procedures of paragraph (d)(4) of this section, or decertify a firm, in whole or in part, you must make an entry in the Department of Transportation Office of Civil Rights' (DOCR's) Ineligibility Determination Online Database. You must enter the following information:

(i) The name of the firm;

(ii) The name(s) of the firm's owner(s);

(iii) The type and date of the action;

(iv) The reason for the action.

(2) As a UCP, you must check the DOCR Web site at least once every month to determine whether any firm that is applying to you for certification or that you have already certified is on the list.

(3) For any such firm that is on the list, you must promptly request a copy of the listed decision from the UCP that made it. As the UCP receiving such a request, you must provide a copy of the decision to the requesting UCP within 7 days of receiving the request. As the UCP receiving the decision, you must then consider the information in the decision in determining what, if any, action to take with respect to the certified DBE firm or applicant.

(g) You must implement the requirements of this section beginning January 1, 2012.

[76 FR 5100, Jan. 28, 2011]

§ 26.86 What rules govern recipients' denials of initial requests for certification?

(a) When you deny a request by a firm, which is not currently certified with you, to be certified as a DBE, you must provide the firm a written explanation of the reasons for the denial, specifically referencing the evidence in the record that supports each reason for the denial. All documents and other information on which the denial is based must be made available to the applicant, on request.

(b) When you deny DBE certification to a firm certified by the SBA, you must notify the SBA in writing. The notification must include the reason for denial.

(c) When a firm is denied certification, you must establish a time period of no more than twelve months that must elapse before the firm may reapply to the recipient for certification. You may provide, in your DBE program, subject to approval by the concerned operating administration, a shorter waiting period for reapplication. The time period for reapplication begins to run on the date the explanation required by paragraph (a) of this section is received by the firm.

(d) When you make an administratively final denial of certification concerning a firm, the firm may appeal the denial to the Department under § 26.89.

[64 FR 5126, Feb. 2, 1999. Redesignated and amended at 68 FR 35555, June 16, 2003]

§ 26.87 What procedures does a recipient use to remove a DBE's eligibility?

(a) *Ineligibility complaints.*

(1) Any person may file with you a written complaint alleging that a currently-certified firm is ineligible and specifying the alleged reasons why the firm is ineligible. You are not required to accept a general allegation that a firm is ineligible or an anonymous complaint. The complaint may include any information or arguments supporting the complainant's assertion that the firm is ineligible and should not continue to be certified. Confidentiality of complainants' identities must be protected as provided in § 26.109(b).

(2) You must review your records concerning the firm, any material provided by the firm and the complainant, and other available information. You may request additional information from the firm or conduct any other investigation that you deem necessary.

(3) If you determine, based on this review, that there is reasonable cause to believe that the firm is ineligible, you must provide written notice to the firm that you propose to find the firm ineligible, setting forth the reasons for the proposed determination. If you determine that such reasonable cause does not exist, you must notify the complainant and the firm in writing of this determination and the reasons for it. All statements of reasons for findings on the issue of reasonable cause must specifically reference the evidence in the record on which each reason is based.

(b) *Recipient-initiated proceedings.* If, based on notification by the firm of a change in its circumstances or other information that comes to your attention, you determine that there is reasonable cause to believe that a currently certified firm is ineligible, you must provide written notice to the firm that you propose to find the firm ineligible, setting forth the reasons for the proposed determination. The statement of reasons for the finding of reasonable cause must specifically reference the evidence in the record on which each reason is based.

(c) *DOT directive to initiate proceeding.*

(1) If the concerned operating administration determines that information in your certification records, or other information available to the concerned operating administration, provides reasonable cause to believe that a firm you certified does not meet the eligibility criteria of this part, the concerned operating administration may direct you to initiate a proceeding to remove the firm's certification.

(2) The concerned operating administration must provide you and the firm a notice setting forth the reasons for the directive, including any relevant documentation or other information.

(3) You must immediately commence and prosecute a proceeding to remove eligibility as provided by paragraph (b) of this section.

(d) *Hearing.* When you notify a firm that there is reasonable cause to remove its eligibility, as provided in paragraph (a), (b), or (c) of this section, you must give the firm an opportunity for an informal hearing, at which the firm may respond to the reasons for the proposal to remove its eligibility in person and provide information and arguments concerning why it should remain certified.

(1) In such a proceeding, you bear the burden of proving, by a preponderance of the evidence, that the firm does not meet the certification standards of this part.

(2) You must maintain a complete record of the hearing, by any means acceptable under state law for the retention of a verbatim record of an administrative hearing. If there is an appeal to DOT under § 26.89, you must provide a transcript of the hearing to DOT and, on request, to the firm. You must retain the original record of the hearing. You may charge the firm only for the cost of copying the record.

(3) The firm may elect to present information and arguments in writing, without going to a hearing. In such a situation, you bear the same burden of proving, by a preponderance of the evidence, that the firm does not meet the certification standards, as you would during a hearing.

(e) *Separation of functions.* You must ensure that the decision in a proceeding to remove a firm's eligibility is made by an office and personnel that did not take part in actions leading to or seeking to implement the proposal to remove the firm's eligibility and are not subject, with respect to the matter, to direction from the office or personnel who did take part in these actions.

(1) Your method of implementing this requirement must be made part of your DBE program.

(2) The decisionmaker must be an individual who is knowledgeable about the certification requirements of your DBE program and this part.

(3) Before a UCP is operational in its state, a small airport or small transit authority (*i.e.*, an airport or transit authority serving an area with less than 250,000 population) is required to meet this requirement only to the extent feasible.

(f) *Grounds for decision.* You must not base a decision to remove eligibility on a reinterpretation or changed opinion of information available to the recipient at the time of its certification of the firm. You may base such a decision only on one or more of the following:

- (1) Changes in the firm's circumstances since the certification of the firm by the recipient that render the firm unable to meet the eligibility standards of this part;
 - (2) Information or evidence not available to you at the time the firm was certified;
 - (3) Information that was concealed or misrepresented by the firm in previous certification actions by a recipient;
 - (4) A change in the certification standards or requirements of the Department since you certified the firm; or
 - (5) A documented finding that your determination to certify the firm was factually erroneous.
- (g) *Notice of decision.* Following your decision, you must provide the firm written notice of the decision and the reasons for it, including specific references to the evidence in the record that supports each reason for the decision. The notice must inform the firm of the consequences of your decision and of the availability of an appeal to the Department of Transportation under § 26.89. You must send copies of the notice to the complainant in an ineligibility complaint or the concerned operating administration that had directed you to initiate the proceeding.
- (h) [Reserved]
- (i) *Status of firm during proceeding.*
- (1) A firm remains an eligible DBE during the pendency of your proceeding to remove its eligibility.

- (2) The firm does not become ineligible until the issuance of the notice provided for in paragraph (4 FR 5126, Feb. 2, 1999, as amended at 68 FR 35556, June 16, 2003; 76 FR 5101, Jan. 28, 2011)

§ 26.89 What is the process for certification appeals to the Department of Transportation?

- (a)(1) If you are a firm that is denied certification or whose eligibility is removed by a recipient, including SBA-certified firms applying pursuant to the DOT/SBA MOU, you may make an administrative appeal to the Department.
- (2) If you are a complainant in an ineligibility complaint to a recipient (including the concerned operating administration in the circumstances provided in § 26.87(c)), you may appeal to the Department if the recipient does not find reasonable cause to propose removing the firm's eligibility or, following a removal of eligibility proceeding, determines that the firm is eligible.
- (3) Send appeals to the following address: Department of Transportation, Office of Civil Rights, 1200 New Jersey Avenue, SE., Washington, DC 20590.
- (b) Pending the Department's decision in the matter, the recipient's decision remains in effect. The Department does not stay the effect of the recipient's decision while it is considering an appeal.
- (c) If you want to file an appeal, you must send a letter to the Department within 90 days of the date of the recipient's final decision, including information and arguments concerning why the recipient's decision should be reversed. The Department may accept an appeal filed later than 90 days after the date of the decision if the Department determines that there was good cause for the late filing of the appeal.
- (1) If you are an appellant who is a firm which has been denied certification, whose certification has been removed, whose owner is determined not to be a member of a designated disadvantaged group, or concerning whose owner the presumption of disadvantage has been rebutted, your letter must state the name and address of any other recipient which currently

certifies the firm, which has rejected an application for certification from the firm or removed the firm's eligibility within one year prior to the date of the appeal, or before which an application for certification or a removal of eligibility is pending. Failure to provide this information may be deemed a failure to cooperate under § 26.109(c).

(2) If you are an appellant other than one described in paragraph (c)(1) of this section, the Department will request, and the firm whose certification has been questioned shall promptly provide, the information called for in paragraph (c)(1) of this section. Failure to provide this information may be deemed a failure to cooperate under § 26.109(c).

(d) When it receives an appeal, the Department requests a copy of the recipient's complete administrative record in the matter. If you are the recipient, you must provide the administrative record, including a hearing transcript, within 20 days of the Department's request. The Department may extend this time period on the basis of a recipient's showing of good cause. To facilitate the Department's review of a recipient's decision, you must ensure that such administrative records are well organized, indexed, and paginated. Records that do not comport with these requirements are not acceptable and will be returned to you to be corrected immediately. If an appeal is brought concerning one recipient's certification decision concerning a firm, and that recipient relied on the decision and/or administrative record of another recipient, this requirement applies to both recipients involved.

(e) The Department makes its decision based solely on the entire administrative record. The Department does not make a de novo review of the matter and does not conduct a hearing. The Department may supplement the administrative record by adding relevant information made available by the DOT Office of Inspector General; Federal, state, or local law enforcement authorities; officials of a DOT operating administration or other appropriate DOT office; a recipient; or a firm or other private party.

(f) As a recipient, when you provide supplementary information to the Department, you shall also make this information available to the firm and any third-party complainant involved, consistent with Federal or applicable state laws concerning freedom of information and privacy. The Department makes available, on request by the firm and any third-party complainant involved, any supplementary information it receives from any source.

(1) The Department affirms your decision unless it determines, based on the entire administrative record, that your decision is unsupported by substantial evidence or inconsistent with the substantive or procedural provisions of this part concerning certification.

(2) If the Department determines, after reviewing the entire administrative record, that your decision was unsupported by substantial evidence or inconsistent with the substantive or procedural provisions of this part concerning certification, the Department reverses your decision and directs you to certify the firm or remove its eligibility, as appropriate. You must take the action directed by the Department's decision immediately upon receiving written notice of it.

(3) The Department is not required to reverse your decision if the Department determines that a procedural error did not result in fundamental unfairness to the appellant or substantially prejudice the opportunity of the appellant to present its case.

(4) If it appears that the record is incomplete or unclear with respect to matters likely to have a significant impact on the outcome of the case, the Department may remand the record to you with instructions seeking clarification or augmentation of the record before making a finding. The Department may also remand a case to you for further proceedings consistent with Department instructions concerning the proper application of the provisions of this part.

(5) The Department does not uphold your decision based on grounds not specified in your decision.

(6) The Department's decision is based on the status and circumstances of the firm as of the date of the decision being appealed.

(7) The Department provides written notice of its decision to you, the firm, and the complainant in an ineligibility complaint. A copy of the notice is also sent to any other recipient whose administrative record or decision has been involved in the proceeding (see paragraph (d) of this section). The Department will also notify the SBA in writing when DOT takes an action on an appeal that results in or confirms a loss of eligibility to any SBA-certified firm. The notice includes the reasons for the Department's decision, including specific references to the evidence in the record that supports each reason for the decision.

(8) The Department's policy is to make its decision within 180 days of receiving the complete administrative record. If the Department does not make its decision within this period, the Department provides written notice to concerned parties, including a statement of the reason for the delay and a date by which the appeal decision will be made.

(g) All decisions under this section are administratively final, and are not subject to petitions for reconsideration.

[64 FR 5126, Feb. 2, 1999, as amended at 65 FR 68951, Nov. 15, 2000; 68 FR 35556, June 16, 2003; 73 FR 33329, June 12, 2008]

§ 26.91 What actions do recipients take following DOT certification appeal decisions?

(a) If you are the recipient from whose action an appeal under § 26.89 is taken, the decision is binding. It is not binding on other recipients.

(b) If you are a recipient to which a DOT determination under § 26.89 is applicable, you must take the following action:

(1) If the Department determines that you erroneously certified a firm, you must remove the firm's eligibility on receipt of the determination, without further proceedings on your part. Effective on the date of your receipt of the Department's determination, the consequences of a removal of eligibility set forth in § 26.87(i) take effect.

(2) If the Department determines that you erroneously failed to find reasonable cause to remove the firm's eligibility, you must expeditiously commence a proceeding to determine whether the firm's eligibility should be removed, as provided in § 26.87.

(3) If the Department determines that you erroneously declined to certify or removed the eligibility of the firm, you must certify the firm, effective on the date of your receipt of the written notice of Department's determination.

(4) If the Department determines that you erroneously determined that the presumption of social and economic disadvantage either should or should not be deemed rebutted, you must take appropriate corrective action as determined by the Department.

(5) If the Department affirms your determination, no further action is necessary.

(c) Where DOT has upheld your denial of certification to or removal of eligibility from a firm, or directed the removal of a firm's eligibility, other recipients with whom the firm is certified may commence a proceeding to remove the firm's eligibility under § 26.87. Such recipients must not remove the firm's eligibility absent such a proceeding. Where DOT has reversed your denial of certification to or removal of eligibility from a firm, other recipients must take the DOT action into account in any certification action involving the firm. However, other recipients are not required to certify the firm based on the DOT decision.

Subpart F—Compliance and Enforcement

§ 26.101 What compliance procedures apply to recipients?

(a) If you fail to comply with any requirement of this part, you may be subject to formal enforcement action under § 26.103 or § 26.105 or appropriate program sanctions by the concerned operating administration, such as the suspension or termination of Federal funds, or refusal to approve projects, grants or contracts until deficiencies are remedied. Program sanctions may include, in the case of the FHWA program, actions provided for under 23 CFR 1.36; in the case of the FAA program, actions consistent with 49 U.S.C. 47106(d), 47111(d), and 47122; and in the case of the FTA program, any actions permitted under 49 U.S.C. chapter 53 or applicable FTA program requirements.

(b) As provided in statute, you will not be subject to compliance actions or sanctions for failing to carry out any requirement of this part because you have been prevented from complying because a Federal court has issued a final order in which the court found that the requirement is unconstitutional.

§ 26.103 What enforcement actions apply in FHWA and FTA programs?

The provisions of this section apply to enforcement actions under FHWA and FTA programs:

(a) *Noncompliance complaints.* Any person who believes that a recipient has failed to comply with its obligations under this part may file a written complaint with the concerned operating administration's Office of Civil Rights. If you want to file a complaint, you must do so no later than 180 days after the date of the alleged violation or the date on which you learned of a continuing course of conduct in violation of this part. In response to your written request, the Office of Civil Rights may extend the time for filing in the interest of justice, specifying in writing the reason for so doing. The Office of Civil Rights may protect the confidentiality of your identity as provided in § 26.109(b). Complaints under this part are limited to allegations of violation of the provisions of this part.

(b) *Compliance reviews.* The concerned operating administration may review the recipient's compliance with this part at any time, including reviews of paperwork and on-site reviews, as appropriate. The Office of Civil Rights may direct the operating administration to initiate a compliance review based on complaints received.

(c) *Reasonable cause notice.* If it appears, from the investigation of a complaint or the results of a compliance review, that you, as a recipient, are in noncompliance with this part, the appropriate DOT office promptly sends you, return receipt requested, a written notice advising you that there is reasonable cause to find you in noncompliance. The notice states the reasons for this finding and directs you to reply within 30 days concerning whether you wish to begin conciliation.

(d) *Conciliation.*

(1) If you request conciliation, the appropriate DOT office shall pursue conciliation for at least 30, but not more than 120, days from the date of your request. The appropriate DOT office may extend the conciliation period for up to 30 days for good cause, consistent with applicable statutes.

(2) If you and the appropriate DOT office sign a conciliation agreement, then the matter is regarded as closed and you are regarded as being in compliance. The conciliation agreement sets forth the measures you have taken or will take to ensure compliance. While a conciliation agreement is in effect, you remain eligible for FHWA or FTA financial assistance.

(3) The concerned operating administration shall monitor your implementation of the conciliation agreement and ensure that its terms are complied with. If you fail to carry out the terms of a conciliation agreement, you are in noncompliance.

(4) If you do not request conciliation, or a conciliation agreement is not signed within the time provided in paragraph (d)(1) of this section, then enforcement proceedings begin.

(e) *Enforcement actions.*

(1) Enforcement actions are taken as provided in this subpart.

(2) Applicable findings in enforcement proceedings are binding on all DOT offices.

§ 26.105 What enforcement actions apply in FAA programs?

(a) Compliance with all requirements of this part by airport sponsors and other recipients of FAA financial assistance is enforced through the procedures of Title 49 of the United States Code, including 49 U.S.C. 47106(d), 47111(d), and 47122, and regulations implementing them.

(b) The provisions of § 26.103(b) and this section apply to enforcement actions in FAA programs.

(c) Any person who knows of a violation of this part by a recipient of FAA funds may file a complaint under 14 CFR part 16 with the Federal Aviation Administration Office of Chief Counsel.

§ 26.107 What enforcement actions apply to firms participating in the DBE program?

(a) If you are a firm that does not meet the eligibility criteria of subpart D of this part and that attempts to participate in a DOT-assisted program as a DBE on the basis of false, fraudulent, or deceitful statements or representations or under circumstances indicating a serious lack of business integrity or honesty, the Department may initiate suspension or debarment proceedings against you under 2 CFR parts 180 and 1200.

(b) If you are a firm that, in order to meet DBE contract goals or other DBE program requirements, uses or attempts to use, on the basis of false, fraudulent or deceitful statements or representations or under circumstances indicating a serious lack of business integrity or honesty, another firm that does not meet the eligibility criteria of subpart D of this part, the Department may initiate suspension or debarment proceedings against you under 2 CFR parts 180 and 1200.

(c) In a suspension or debarment proceeding brought under paragraph (a) or (b) of this section, the concerned operating administration may consider the fact that a purported DBE has been certified by a recipient. Such certification does not preclude the Department from determining that the purported DBE, or another firm that has used or attempted to use it to meet DBE goals, should be suspended or debarred.

(d) The Department may take enforcement action under 49 CFR Part 31, Program Fraud and Civil Remedies, against any participant in the DBE program whose conduct is subject to such action under 49 CFR part 31.

(e) The Department may refer to the Department of Justice, for prosecution under 18 U.S.C. 1001 or other applicable provisions of law, any person who makes a false or fraudulent statement in connection with participation of a DBE in any DOT-assisted program or otherwise violates applicable Federal statutes.

[64 FR 5126, Feb. 2, 1999, as amended at 76 FR 5101, Jan. 28, 2011]

§ 26.109 What are the rules governing information, confidentiality, cooperation, and intimidation or retaliation?

(a) *Availability of records.*

(1) In responding to requests for information concerning any aspect of the DBE program, the Department complies with provisions of the Federal Freedom of Information and Privacy Acts (5

U.S.C. 552 and 552a). The Department may make available to the public any information concerning the DBE program release of which is not prohibited by Federal law.

(2) Notwithstanding any provision of Federal or state law, you must not release any information that may reasonably be construed as confidential business information to any third party without the written consent of the firm that submitted the information. This includes applications for DBE certification and supporting information. However, you must transmit this information to DOT in any certification appeal proceeding under § 26.89 of this part or to any other state to which the individual's firm has applied for certification under § 26.85 of this part.

(b) *Confidentiality of information on complainants.* Notwithstanding the provisions of paragraph (a) of this section, the identity of complainants shall be kept confidential, at their election. If such confidentiality will hinder the investigation, proceeding or hearing, or result in a denial of appropriate administrative due process to other parties, the complainant must be advised for the purpose of waiving the privilege. Complainants are advised that, in some circumstances, failure to waive the privilege may result in the closure of the investigation or dismissal of the proceeding or hearing. FAA follows the procedures of 14 CFR part 16 with respect to confidentiality of information in complaints.

(c) *Cooperation.* All participants in the Department's DBE program (including, but not limited to, recipients, DBE firms and applicants for DBE certification, complainants and appellants, and contractors using DBE firms to meet contract goals) are required to cooperate fully and promptly with DOT and recipient compliance reviews, certification reviews, investigations, and other requests for information. Failure to do so shall be a ground for appropriate action against the party involved (e.g., with respect to recipients, a finding of noncompliance; with respect to DBE firms, denial of certification or removal of eligibility and/or suspension and debarment; with respect to a complainant or appellant, dismissal of the complaint or appeal; with respect to a contractor which uses DBE firms to meet goals, findings of non-responsibility for future contracts and/or suspension and debarment).

(d) *Intimidation and retaliation.* If you are a recipient, contractor, or any other participant in the program, you must not intimidate, threaten, coerce, or discriminate against any individual or firm for the purpose of interfering with any right or privilege secured by this part or because the individual or firm has made a complaint, testified, assisted, or participated in any manner in an investigation, proceeding, or hearing under this part. If you violate this prohibition, you are in noncompliance with this part.

[64 FR 5126, Feb. 2, 1999, as amended at 68 FR 35556, June 16, 2003; 76 FR 5101, Jan. 28, 2011]