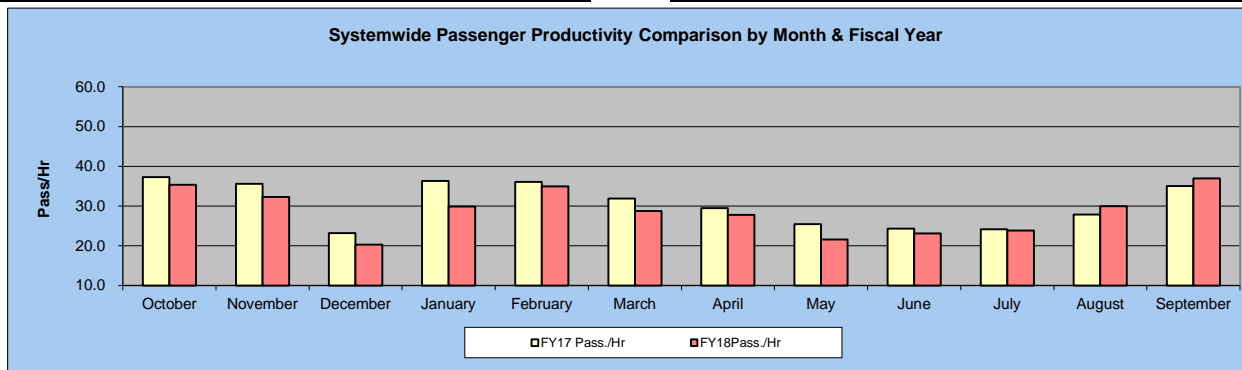


Gainesville-RTS Passenger Productivity by Month and Fiscal Year

FY 2018 Monthly Passenger Productivity Report Summary			
Month	Passenger Trips	Revenue Hours	FY18Pass./Hr
October	1,125,284	31,818	35.4
November	921,572	28,547	32.3
December	468,995	23,119	20.3
January	910,272	30,485	29.9
February	983,113	28,121	35.0
March	840,882	29,265	28.7
April	892,604	32,079	27.8
May	460,494	21,331	21.6
June	421,074	18,218	23.1
July	483,653	20,315	23.8
August	752,253	25,132	29.9
September	1,091,282	29,522	37.0
FY 18 YTD	9,351,478	317,952	29.4
YTD Δ%	-1%	5%	-6%

FY 2017 Monthly Passenger Productivity Report Summary			
Month	Passenger Trips	Revenue Hours	FY17 Pass./Hr
October	1,055,633	28,324	37.3
November	944,626	26,550	35.6
December	556,581	23,961	23.2
January	1,019,597	28,050	36.3
February	1,023,601	28,356	36.1
March	912,657	28,602	31.9
April	849,410	28,818	29.5
May	467,398	18,355	25.5
June	445,986	18,335	24.3
July	467,100	19,316	24.2
August	760,072	27,260	27.9
September	941,276	26,863	35.0
FY 17 YTD	9,443,937	302,791	31.2
FY 17 YTD	9,443,937	302,791	31.2



* October 19th 2017 Cancelled routes 117, 118, 119 and 125. Detours on routes 20, 21, 28, 33, 34 Due to the R.Spencer at Phillips Center.

*November 22nd Santa Fe Service was Regular Service, except routes 23 and 43 in the night time.

*** December 2017 5 Saturdays and 5 Sundays

**** January 2017 had 19 Regular Weekdays service, 1 Reduced Service, 4 Saturdays and 5 Sundays. Just Missed trips No Cancelled Runs.

*****February 2018 To many hours on cancelled runs

*****March 2018 "Rebids" March 19th, 2018 new bids by cutting service hours.

*****April 2018 has no Final Exam in the last week. April 2017 had 5 Saturdays and April 2018 just 4 Saturdays Service and Final Exams.

*****May 2018 has 4 weekdays, 1 Saturday and 1 Sunday from Spring Schedule. First week Spring Schedule

*****June 2018 has Summer Break reduced service week this year.

*****July 2018 has one more weekday and one Saturday less than July 2017. No cancelled runs on July 2018

*****August 2018 has one more week on Summer Schedule than August 2017.

Gainesville-RTS Passenger Productivity by Month and Fiscal Year
Monthly Passenger Productivity Report (September 2018)

Route	City	Passengers	Hours	Pass./Hr	FY 2018 Pass.	FY 2018 Hours	FY 2018 Pass./Hr
1	Downtown Station to Butler Plaza	52,217	1,503	34.7	543,190	17,680	30.7
2	Downtown Station to NE Walmart Supercenter	6,421	304	21.1	71,201	3,933	18.1
3	Downtown Station to N Main Post Office	2,735	149	18.3	27,875	1,973	14.1
5	Downtown Station to Oaks Mall	34,277	1,225	28.0	387,329	14,436	26.8
6	Downtown Station to Plaza Verde	7,029	309	22.8	90,131	4,022	22.4
7	Downtown Station to Eastwood Meadows	7,044	263	26.8	69,791	3,484	20.0
8	Shands to North Walmart Supercenter	28,558	986	29.0	294,874	12,618	23.4
9	Reitz Union to Hunters Run	55,625	1,198	46.4	462,636	13,127	35.2
10	Downtown Station to Santa Fe	10,887	462	23.6	99,165	5,860	16.9
11	Downtown Station to Eastwood Meadows	8,167	425	19.2	100,970	5,612	18.0
12	Reitz Union to Butler Plaza	57,965	1,382	42.0	505,721	15,792	32.0
13	Beaty Towers to CareerSource	43,395	803	54.1	342,307	8,952	38.2
15	Downtown Station to NW 13th St (@ NW 23rd Ave)	20,371	650	31.4	244,473	8,402	29.1
16	Beaty Towers to Sugar Hill	11,282	392	28.8	107,111	4,947	21.7
17	Beaty Towers to Downtown Station	11,439	253	45.2	104,742	3,385	30.9
19	Reitz Union to SW 23rd Terr @ SW 35th Place	1,177	45	26.0	7,140	261	27.3
20	Reitz Union to Oaks Mall	87,090	1,773	49.1	846,141	20,115	42.1
21	Reitz Union to Cabana Beach	36,521	858	42.6	280,449	7,212	38.9
23	Oaks Mall to Santa Fe	10,666	470	22.7	106,176	5,095	20.8
24	Downtown Station to Job Corps	1,237	147	8.4	15,139	1,950	7.8
25	UF Commuter Lot to Airport	6,450	282	22.8	71,293	3,571	20.0
26	Downtown Station to Airport	9,239	293	31.6	115,271	3,936	29.3
27	Downtown Station to NE Walmart Supercenter	850	74	11.4	11,771	1,131	10.4
28	The Hub to Forest Park	23,858	661	36.1	193,142	5,405	35.7
29	Beaty Towers to Kiwanis Park	7,310	203	36.0	41,141	1,348	30.5
33	Butler Plaza to Midtown	44,232	1,294	34.2	319,849	14,024	22.8
34	The HUB to Lexington Crossing	28,570	808	35.4	222,080	8,999	24.7
35	Reitz Union to SW 35th Place	66,407	1,433	46.3	614,451	16,264	37.8
36	Reitz Union to SW 34th St Post Office	13,462	376	35.8	96,546	3,201	30.2
37	Reitz Union to Butler Plaza (via SW 35th Place)	24,616	533	46.1	194,536	5,368	36.2
38	The Hub to Gainesville Place	77,940	951	82.0	578,826	9,910	58.4
39	Santa Fe to Airport	3,132	191	16.4	21,995	1,619	13.6
40	HUB to Hunters Crossing	4,283	308	13.9	30,679	2,443	12.6
43	Shands to Santa Fe	18,923	733	25.8	191,516	10,048	19.1
46	Reitz Union to Downtown Station	20,214	339	59.5	155,979	3,404	45.8
62	Oaks Mall to Lexington Crossing				17,401	1,305	13.3
75	Oaks Mall to Butler Plaza	18,434	742	24.8	230,791	9,555	24.2
76	Santa Fe to Haile Square Market	3,935	189	20.9	31,414	1,614	19.5
77	Santa Fe to Cabana Beach Apts	3,760	156	24.0	27,959	1,339	20.9
711	Downtown to E. Meadows	2,913	159	18.3	32,985	1,862	17.7
800X	Santa Fe to Butler Plaza	1,730	188	9.2	2,359	288	8.2
	City totals	874,361	23,510	37.2	7,908,545	265,488	29.8

Route	Campus	Passengers	Hours	Pass./Hr	FY 2018 Pass.	FY 2018 Hours	FY 2018 Pass./Hr
117	Park-N-Ride 2 (SW 34th St.)	9,438	232	40.7	115,777	3,408	34.0
118	Park-N-Ride 1 (Cultural Plaza)	52,568	843	62.3	350,261	8,678	40.4
119	Family Housing	6,163	197	31.3	69,733	2,621	26.6
120	West Circulator (Fraternity Row)	27,219	403	67.6	225,001	6,467	34.8
121	Commuter Lot	7,635	404	18.9	65,530	4,940	13.3
122	UF North/South Circulator	9,169	377	24.3	48,689	2,552	19.1
125	Lakeside	17,336	377	46.0	131,479	3,958	33.2
126	UF East/West Circulator	14,100	691	20.4	78,946	5,322	14.8
127	East Circulator (Sorority Row)	42,938	417	102.9	246,788	5,474	45.1
128	Reitz Union to Lake Wauburg			#DIV/0!	1,586	222	7.2
	Campus totals	186,566	3,942	47.3	1,333,790	43,642	30.6

Route	Later Gator Service	Passengers	Hours	Pass./Hr	FY 2018 Pass.	FY 2018 Hours	FY 2018 Pass./Hr
300	Later Gator A (Fraternity Row to and from Downtown Station)	1,635	310	5.3	13,770	2,430	5.7
301	Later Gator B (SW Gainesville to and from Downtown Station)	1,633	234	7.0	15,910	1,840	8.6
302	Later Gator C (Oaks Mall to and from Downtown Station)	2,519	244	10.3	22,397	1,818	12.3
303	Later Gator D (CareerSource to and from Downtown Station)	140	59	2.4	1,673	368	4.5
305	Later Gator F (Butler Plaza to and from Downtown Station)	274	66	4.2	3,508	422	8.3
	Later Gator Totals	6,201	913	6.8	57,258	6,878	8.3

Route	Other Services	Passengers	Hours	Pass./Hr	FY 2018 Pass.	FY 2018 Hours	FY 2018 Pass./Hr
98-99	Special Services	-	-	-	-	-	-
198-203	Gator Aider	24,154	1,157	21	51,885	1,943	26.7
	Other Services Totals	24,154	1,157	21	51,885	1,943	26.7
	System-wide Totals	1,091,282	29,522	37.0	9,351,478	317,952	29.4

Gainesville-RTS Passenger Productivity by Month and Fiscal Year
Weekday Passenger Productivity Report (September 2018)

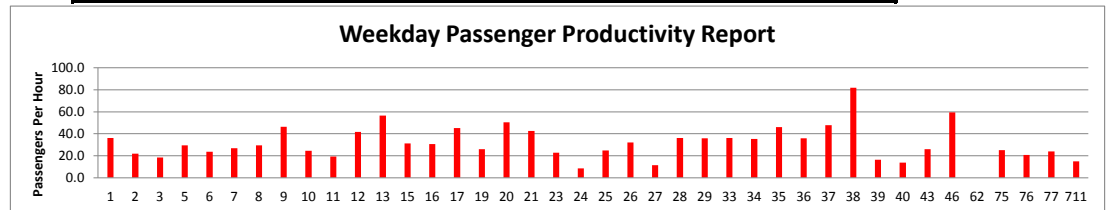
Route	City	Passengers	Hours	Pass./Hr	FY 2018 Pass.	FY 2018 Hours	FY 2018 Pass./Hr
1	Downtown Station to Butler Plaza	45,406	1,253	36.2	482,621	15,323	31.5
2	Downtown Station to NE Walmart Supercenter	5,272	240	22.0	62,680	3,304	19.0
3	Downtown Station to N Main Post Office	2,735	149	18.3	27,875	1,973	14.1
5	Downtown Station to Oaks Mall	29,320	993	29.5	335,213	12,253	27.4
6	Downtown Station to Plaza Verde	6,715	284	23.7	86,605	3,762	23.0
7	Downtown Station to Eastwood Meadows	7,044	263	26.8	69,791	3,484	20.0
8	Shands to North Walmart Supercenter	26,072	882	29.5	275,299	11,523	23.9
9	Reitz Union to Hunters Run	55,625	1,198	46.4	462,636	13,127	35.2
10	Downtown Station to Santa Fe	10,346	422	24.5	95,532	5,483	17.4
11	Downtown Station to Eastwood Meadows	8,167	425	19.2	100,970	5,612	18.0
12	Reitz Union to Butler Plaza	51,369	1,230	41.7	460,368	14,289	32.2
13	Beaty Towers to CareerSource	42,112	746	56.5	329,797	8,408	39.2
15	Downtown Station to NW 13th St (@ NW 23rd Ave)	17,106	546	31.3	209,952	7,355	28.5
16	Beaty Towers to Sugar Hill	10,261	333	30.8	97,020	4,392	22.1
17	Beaty Towers to Downtown Station	11,439	253	45.2	104,742	3,385	30.9
19	Reitz Union to SW 23rd Terr @ SW 35th Place	1,177	45	26.0	7,140	261	27.3
20	Reitz Union to Oaks Mall	75,885	1,505	50.4	763,112	17,663	43.2
21	Reitz Union to Cabana Beach	36,521	858	42.6	280,449	7,212	38.9
23	Oaks Mall to Santa Fe	10,666	470	22.7	106,176	5,095	20.8
24	Downtown Station to Job Corps	1,237	147	8.4	15,139	1,950	7.8
25	UF Commuter Lot to Airport	4,967	201	24.7	55,714	2,715	20.5
26	Downtown Station to Airport	9,059	283	32.0	113,985	3,867	29.5
27	Downtown Station to NE Walmart Supercenter	850	74	11.4	11,771	1,131	10.4
28	The Hub to Forest Park	23,858	661	36.1	193,142	5,405	35.7
29	Beaty Towers to Kiwanis Park	7,310	203	36.0	41,141	1,348	30.5
33	Butler Plaza to Midtown	41,805	1,151	36.3	303,456	12,573	24.1
34	The HUB to Lexington Crossing	28,570	808	35.4	222,080	8,999	24.7
35	Reitz Union to SW 35th Place	60,992	1,320	46.2	576,633	15,116	38.1
36	Reitz Union to SW 34th St Post Office	13,462	376	35.8	96,546	3,201	30.2
37	Reitz Union to Butler Plaza (via SW 35th Place)	21,562	451	47.9	173,239	4,499	38.5
38	The Hub to Gainesville Place	77,940	951	82.0	578,826	9,910	58.4
39	Santa Fe to Airport	3,132	191	16.4	21,995	1,619	13.6
40	HUB to Hunters Crossing	4,283	308	13.9	30,679	2,443	12.6
43	Shands to Santa Fe	18,862	723	26.1	191,139	9,975	19.2
46	Reitz Union to Downtown Station	20,214	339	59.5	155,979	3,404	45.8
62	Oaks Mall to Lexington Crossing	-	-	-	17,401	1,305	13.3
75	Oaks Mall to Butler Plaza	15,680	624	25.1	202,260	8,350	24.2
76	Santa Fe to Haile Square Market	3,935	189	20.9	31,414	1,614	19.5
77	Santa Fe to Cabana Beach Apts	3,760	156	24.0	27,959	1,339	20.9
711	Downtown to E. Meadows	720	49	14.8	10,091	716	14.1
800X	Santa Fe to Butler Plaza	1,730	188	9.2	2,359	288	8.2
City totals		817,166	21,300	38.4	7,430,926	245,671	30.2

Route	Campus	Passengers	Hours	Pass./Hr	FY 2018 Pass.	FY 2018 Hours	FY 2018 Pass./Hr
117	Park-N-Ride 2 (SW 34th St.)	9,438	232	40.7	115,777	3,408	34.0
118	Park-N-Ride 1 (Cultural Plaza)	52,568	843	62.3	350,261	8,678	40.4
119	Family Housing	6,163	197	31.3	69,733	2,621	26.6
120	West Circulator (Fraternity Row)	27,219	403	67.6	225,001	6,467	34.8
121	Commuter Lot	7,635	404	18.9	65,530	4,940	13.3
122	UF North/South Circulator	9,169	377	24.3	48,689	2,552	19.1
125	Lakeside	17,336	377	46.0	131,479	3,958	33.2
126	UF East/West Circulator	10,010	499	20.1	58,416	4,070	14.4
127	East Circulator (Sorority Row)	42,938	417	102.9	246,788	5,474	45.1
Campus totals		182,476	3,750	48.7	1,311,674	42,168	31.1

Route	Later Gator Service	Passengers	Hours	Pass./Hr	FY 2018 Pass.	FY 2018 Hours	FY 2018 Pass./Hr
300	Later Gator A (Fraternity Row to and from Downtown Station)	1,051	188	5.6	9,331	1,638	5.7
301	Later Gator B (SW Gainesville to and from Downtown Station)	946	144	6.6	9,967	1,236	8.1
302	Later Gator C (Oaks Mall to and from Downtown Station)	1,726	150	11.5	13,424	1,184	11.3
Later Gator Totals		3,723	483	7.7	32,722	4,059	8.1

Route	Other Services	Passengers	Hours	Pass./Hr	FY 2018 Pass.	FY 2018 Hours	FY 2018 Pass./Hr
98-99	Special Services	-	-	-	-	-	-
198-203	Gator Aider	-	-	-	-	-	-
Other Services Totals		-	-	-	-	-	0.0
Systemwide Totals		1,003,365	25,533	39.3	8,775,322	291,898	30.1

Service	Rev. Days	FY Rev. Days	Day	Ridership
Weekdays	19	217	Weekday Reduced	52,802
Reduced Service Days	0	32	Service	-



Gainesville-RTS Passenger Productivity by Month and Fiscal Year
Saturday Monthly Passenger Productivity Report September 2018

Route	City	Passengers	Hours	Pass./Hr	FY 2018 Pass.	FY 2018 Hours	FY 2018 Pass./Hr
1	Downtown Station to Butler Plaza	4,466	166	26.9	40,966	1,605	25.5
2	Downtown Station to NE Walmart Supercenter	1,078	54	20.0	7,903	561	14.1
5	Downtown Station to Oaks Mall	3,285	183	17.9	38,061	1,697	22.4
6	Downtown to Plaza Verde	314	25	12.6	3,526	260	13.6
8	Shands to North Walmart Supercenter	1,676	59	28.3	12,025	615	19.5
10	Downtown Station to Santa Fe	480	30	16.2	3,175	308	10.3
12	Reitz Union to Butler Plaza	5,172	109	47.4	31,344	1,059	29.6
13	Beaty Towers to CareerSource	623	28	22.1	7,623	294	25.9
15	Downtown Station to NW 13th St (@ NW 23rd Ave)	2,069	54	38.1	21,442	565	37.9
16	Beaty Towers to Sugar Hill	333	29	11.6	6,330	298	21.2
20	Reitz Union to Oaks Mall	7,431	184	40.4	56,600	1,704	33.2
25	UF Cultural Plaza to Airport	860	47	18.4	9,902	485	20.4
33	Butler Plaza to Midtown	1,818	102	17.8	10,381	1,027	10.1
35	Reitz Union to SW 35th Place	3,201	63	51.2	22,026	650	33.9
37	Reitz Union to Butler Plaza	1,998	45	44.3	12,567	469	26.8
75	Oaks Mall to Butler Plaza	1,670	69	24.2	18,337	719	25.5
711	Downtown Station to Eastwood Meadows	1,474	66	22.3	14,398	666	21.6
	City Totals	37,948	1,313	28.9	316,606	12,982	24.4

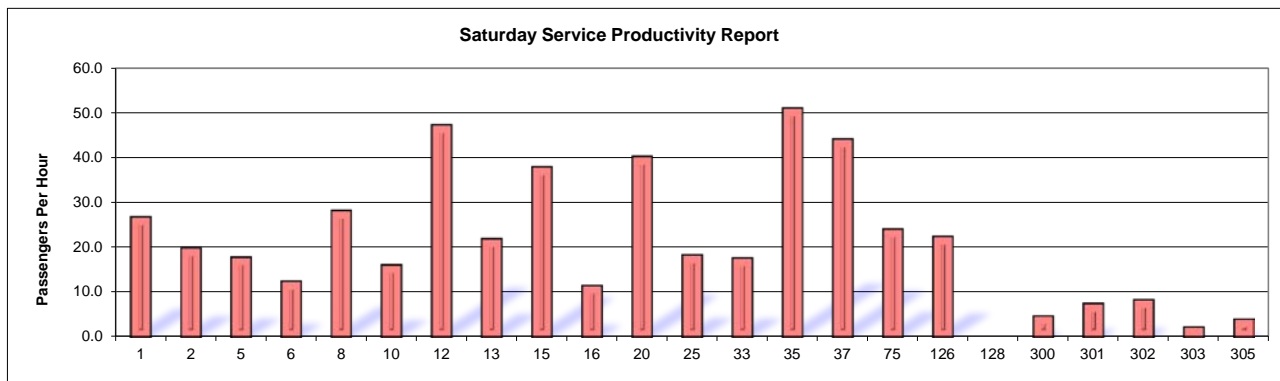
Route	Campus	Passengers	Hours	Pass./Hr	FY 2018 Pass.	FY 2018 Hours	FY 2018 Pass./Hr
126	UF East/West Circulator (Saturday)	2,173	96	22.6	9,235	617	15.0
128	Reitz Union to Lake Wauburg	0	0	#DIV/0!	1,586	222	7.2
	Campus Totals	2,173	96	22.6	10,821	838	12.9

Route	Later Gator Service	Passengers	Hours	Pass./Hr	FY 2018 Pass.	FY 2018 Hours	FY 2018 Pass./Hr
300	Later Gator A (Fraternity Row to and from Downtown Station)	584	122	4.8	4,439	792	5.6
301	Later Gator B (SW Gainesville to and from Downtown Station)	687	90	7.6	5,943	604	9.8
302	Later Gator C (Oaks Mall to and from Downtown Station)	793	94	8.5	8,973	634	14.2
303	Later Gator D (CareerSource to and from Downtown Station)	140	59	2.4	1,673	368	4.5
305	Later Gator F (Butler Plaza to and from Downtown Station)	274	66	4.2	3,508	422	8.3
	Later Gator Totals	2,478	430	5.8	24,536	2,819	8.7

Route	Other Services	Passengers	Hours	Pass./Hr	FY 2018 Pass.	FY 2018 Hours	FY 2018 Pass./Hr
98-99	Special Services	-	-	-	-	-	-
198-203	Gator Aider*	24,154	-	-	51,885	787	65.9
	Other Services Totals	24,154	-	-	51,885	787	65.9
	System-wide Totals	66,753	1,839	36.3	403,848	17,426	23.2

Service	Rev. Days
Saturdays	5

Service Day	Average Ridership
Saturday	13,364



Gainesville-RTS Passenger Productivity by Month and Fiscal Year
Sunday Monthly Passenger Productivity Report (September 2018)

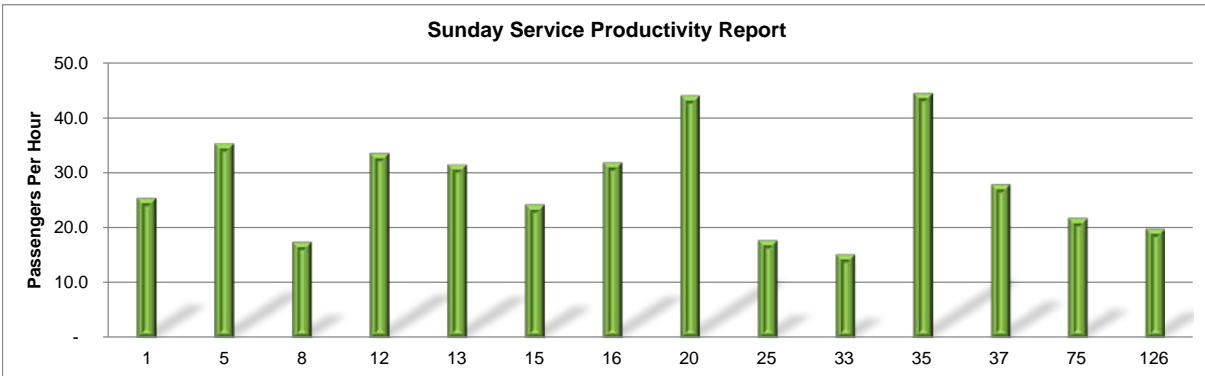
Route	City	Passengers	Hours	Pass./Hr	FY 2018 Pass.	FY 2018 Hours	FY 2018 Pass./Hr
1	Downtown Station to Butler Plaza	1,892	74	25.5	16,641	430	38.7
5	Downtown Station to Oaks Mall	1,393	39	35.4	11,974	283	42.3
8	Shands to North Walmart Supercenter	686	39	17.5	6,644	283	23.5
12	Downtown Station to Eastwood Meadows	1,424	42	33.6	14,009	300	46.7
13	Reitz Union to Butler Plaza	600	19	31.6	4,410	139	31.7
15	Beaty Towers to CareerSource	955	39	24.3	11,194	283	39.5
16	Downtown Station to NW 13th St (@ NW 23rd Ave)	639	20	32.0	3,299	144	22.9
20	Beaty Towers to Sugar Hill	3,273	74	44.1	23,590	430	54.9
25	UF Cultural Plaza to Airport	623	35	17.8	5,677	252	22.5
33	Butler Plaza to Midtown	609	40	15.2	6,012	288	20.9
35	Reitz Union to SW 35th Place	1,802	41	44.5	13,530	292	46.4
37	Reitz Union to Butler Plaza	1,056	38	28.0	8,730	272	32.1
75	Oaks Mall to Butler Plaza	849	39	21.8	8,546	280	30.5
711	Downtown Station to Eastwood Meadows	589	39	15.1	7,541	282	26.8
City Totals		16,390	579	28.3	141,797	3,957	35.8

Route	Campus	Passengers	Hours	Pass./Hr	FY 2018 Pass.	FY 2018 Hours	FY 2018 Pass./Hr
126	UF East/West Circulator	1,917	96	19.9	11,295	347	32.6
Campus Totals		1,917	96	20	11,295	347	33

Route	Other Services	Passengers	Hours	Pass./Hr	FY 2018 Pass.	FY 2018 Hours	FY 2018 Pass./Hr
98-99	Special Services	-	-	-	-	-	-
198-203	Gator Aider*	-	-	-	-	-	-
Other Services Totals		-	-	-	-	-	-
System-wide Totals		18,307	675	27.1	153,092	4,304	35.6

Service	Rev. Days
Sunday	5

Service Day	Average Ridership
Sunday	3,672



**Gainesville-RTS Passenger Productivity by Month and Fiscal Year
 Holiday Monthly Passenger Productivity Report (September 2018)**

Route	City	Passengers	Hours	Pass./Hr	FY 2016 Pass.	FY 2016 Hours	FY 2016 Pass./Hr
1	Downtown to Butler Plaza: via Archer RD	453	10	45.7	2,962	69	42.7
2	Downtown to Walmart Supercenter	71	10	7.3	618	68	9.0
5	Downtown to Oaks Mall (via University Ave)	279	10	28.3	2,081	69	30.1
8	Shands to Northwood Village.	124	5	25.4	906	64	14.1
10	Downtown to Santa Fe	61	10	6.1	458	69	6.6
13	Beaty Towers to FloridaWorks	60	10	6.1	477	45	10.7
15	Downtown to Gainesville Mall (via NE 15th St.)	241	10	24.4	1,885	64	29.4
16	Beaty Towers to Sugar Hill	49	11	4.7	462	45	10.3
20	Reitz Union to Oaks Mall (via 20th Ave)	501	11	46.6	2,839	65	43.5
26	Downtown to FDOT-Airport	180	10	18.2	1,286	69	18.6
35	Reitz Union to Homestead Apts.	412	10	41.7	2,262	69	32.7
43	UF- Health to Santa Fe	61	10	6.2	377	72	5.2
75	Oaks Mall to Butler Plaza	235	10	23.9	1,648	74	22.2
711	Downtown to E. Meadows	130	5	26.0	955	66	14.6
City Totals		2,857	130	22.0	19,216	909	21.1
Other Services Totals		-	-	-	-	-	-
System-wide Totals		2,857	130	22.0	19,216	909	21.1

Service	Rev. Days
Holiday	1

Service Day	Average Ridership
Holiday	4,804

September 2018

Ridership by Route and Farebox Key

Route	UF Students	%	UF Staff	%	Monthly TOTAL	Ridership TOTALS	% UF	
1	Downtown Station to Butler Plaza	28,059	94.68%	1,578	5.32%	29,637	52,217	56.8%
2	Downtown Station to NE Walmart Supercenter	498	94.32%	30	5.68%	528	6,421	8.2%
3	Downtown Station to N Main Post Office	260	99.62%	1	0.38%	261	2,735	9.5%
5	Downtown Station to Oaks Mall	13,727	94.29%	831	5.71%	14,558	34,277	42.5%
6	Downtown Station to Plaza Verde	451	94.35%	27	5.65%	478	7,029	6.8%
7	Downtown Station to Eastwood Meadows	468	81.96%	103	18.04%	571	7,044	8.1%
8	Shands to North Walmart Supercenter	16,446	94.80%	903	5.20%	17,349	28,558	60.8%
9	Reitz Union to Hunters Run	54,100	99.44%	303	0.56%	54,403	55,625	97.8%
10	Downtown Station to Santa Fe	2,159	97.12%	64	2.88%	2,223	10,887	20.4%
11	Downtown Station to Eastwood Meadows	645	88.11%	87	11.89%	732	8,167	9.0%
12	Reitz Union to Butler Plaza	52,664	99.47%	280	0.53%	52,944	57,965	91.3%
13	Beaty Towers to CareerSource	36,407	98.62%	510	1.38%	36,917	43,395	85.1%
15	Downtown Station to NW 13th St (@ NW 23rd Ave)	1,152	60.44%	754	39.56%	1,906	20,371	9.4%
16	Beaty Towers to Sugar Hill	7,651	93.44%	537	6.56%	8,188	11,282	72.6%
17	Beaty Towers to Downtown Station	6,645	96.23%	260	3.77%	6,905	11,439	60.4%
19	Reitz Union to SW 23rd Terr @ SW 35th Place	1,103	96.75%	37	3.25%	1,140	1,177	96.9%
20	Reitz Union to Oaks Mall	69,254	98.45%	1,088	1.55%	70,342	87,090	80.8%
21	Reitz union to Cabana Beach Apt	34,796	99.18%	287	0.82%	35,083	36,521	96.1%
23	Oaks Mall to Santa Fe	1,700	91.35%	161	8.65%	1,861	10,666	17.4%
24	Downtown Station to Job Corps	81	61.36%	51	38.64%	132	1,237	10.7%
25	UF Commuter Lot to Airport	3,594	97.11%	107	2.89%	3,701	6,450	57.4%
26	Downtown Station to Airport	491	99.39%	3	0.61%	494	9,239	5.3%
27	Downtown Station to NE Walmart Supercenter	28	82.35%	6	17.65%	34	850	4.0%
28	The Hub to Forest Park	22,879	99.66%	77	0.34%	22,956	23,858	96.2%
29	Beaty Towers to Kiwanis Park	6,335	99.47%	34	0.53%	6,369	7,310	87.1%
33	Butler Plaza to Midtown	41,265	98.02%	835	1.98%	42,100	44,232	95.2%
34	The HUB to Lexington Crossing	26,977	99.07%	254	0.93%	27,231	28,570	95.3%
35	Reitz Union to SW 35th Place	58,526	98.94%	629	1.06%	59,155	66,407	89.1%
36	Reitz Union to SW 34th St Post Office	12,651	98.60%	179	1.40%	12,830	13,462	95.3%
37	Reitz Union to Butler Plaza (via SW 35th Place)	20,041	93.21%	1,461	6.79%	21,502	24,616	87.3%
38	The Hub to Gainesville Place	75,964	99.11%	683	0.89%	76,647	77,940	98.3%
39	Santa Fe to Airport	92	77.97%	26	22.03%	118	3,132	3.8%
40	HUB to Hunters Crossing	3,836	97.29%	107	2.71%	3,943	4,283	92.1%
43	Shands to Santa Fe	10,708	93.57%	736	6.43%	11,444	18,923	60.5%
46	Reitz Union to Downtown Station	19,059	99.58%	81	0.42%	19,140	20,214	94.7%
62	Oaks Mall to Lexington Crossing							
75	Oaks Mall to Butler Plaza	1,512	82.94%	311	17.06%	1,823	18,434	9.9%
76	Santa Fe to Haile Square Market	302	95.57%	14	4.43%	316	3,935	8.0%
77	Santa Fe to Cabana Beach Apts	271	96.79%	9	3.21%	280	3,760	7.4%
117	Park-N-Ride 2 (SW 34th St.)	9,254	99.15%	79	0.85%	9,333	9,438	98.9%
118	Park-N-Ride 1 (Cultural Plaza)	51,810	99.37%	329	0.63%	52,139	52,568	99.2%
119	Family Housing	6,090	99.22%	48	0.78%	6,138	6,163	99.6%
120	West Circulator (Fraternity Row)	27,075	99.67%	91	0.33%	27,166	27,219	99.8%
121	Commuter Lot	7,020	98.25%	125	1.75%	7,145	7,635	93.6%
122	UF North/South Circulator	9,093	99.78%	20	0.22%	9,113	9,169	99.4%
125	Lakeside	17,139	99.73%	46	0.27%	17,185	17,336	99.1%
126	UF East/West Circulator	13,411	99.87%	17	0.13%	13,428	14,100	95.2%
127	East Circulator (Sorority Row)	41,758	99.64%	149	0.36%	41,907	42,938	97.6%
128	Reitz Union to Lake Wauburg							
300	Later Gator A (Fraternity Row to and from Downtown Station)	1,562	99.87%	2	0.13%	1,564	1,635	95.7%
301	Later Gator B (SW Gainesville to and from Downtown Station)	1,454	99.11%	13	0.89%	1,467	1,633	89.8%
302	Later Gator C (Oaks Mall to and from Downtown Station)	2,079	99.38%	13	0.62%	2,092	2,519	83.0%
303	Later Gator D (CareerSource to and from Downtown Station)	119	99.17%	1	0.83%	120	140	85.7%
305	Later Gator F (Butler Plaza to and from Downtown Station)	205	99.51%	1	0.49%	206	274	75.2%
711	Downtown Station to Eastwood Meadows	228	73.08%	84	26.92%	312	2,913	10.7%
800X	Santa Fe to Butler Plaza	55	67.90%	26	32.10%	81	1,730	4.7%
Total		821,094	98.27%	14,462	1.73%	835,556	1,065,398	78.43%

September 2018

Ridership by Route and Farebox Key

Route	SF Students	%	SF Staff	%	Monthly TOTAL	Ridership TOTALS	% SF	
1	Downtown Station to Butler Plaza	2,191	97.94%	46	2.06%	2,237	52,217	4.3%
2	Downtown Station to NE Walmart Supercenter	650	99.69%	2	0.31%	652	6,421	10.2%
3	Downtown Station to N Main Post Office	163	100.00%	0	0.00%	163	2,735	6.0%
5	Downtown Station to Oaks Mall	2,843	93.86%	186	6.14%	3,029	34,277	8.8%
6	Downtown Station to Plaza Verde	619	99.68%	2	0.32%	621	7,029	8.8%
7	Downtown Station to Eastwood Meadows	479	99.38%	3	0.62%	482	7,044	6.8%
8	Shands to North Walmart Supercenter	1,761	99.16%	15	0.84%	1,776	28,558	6.2%
9	Reitz Union to Hunters Run	320	94.96%	17	5.04%	337	55,625	0.6%
10	Downtown Station to Santa Fe	5,582	99.98%	1	0.02%	5,583	10,887	51.3%
11	Downtown Station to Eastwood Meadows	715	99.03%	7	0.97%	722	8,167	8.8%
12	Reitz Union to Butler Plaza	2,044	99.46%	11	0.54%	2,055	57,965	3.5%
13	Beaty Towers to CareerSource	818	98.20%	15	1.80%	833	43,395	1.9%
15	Downtown Station to NW 13th St (@ NW 23rd Ave)	1,415	99.09%	13	0.91%	1,428	20,371	7.0%
16	Beaty Towers to Sugar Hill	312	99.36%	2	0.64%	314	11,282	2.8%
17	Beaty Towers to Downtown Station	261	97.03%	8	2.97%	269	11,439	2.4%
19	Reitz Union to SW 23rd Terr @ SW 35th Place	11	100.00%	0	0.00%	11	1,177	0.9%
20	Reitz Union to Oaks Mall	9,103	99.77%	21	0.23%	9,124	87,090	10.5%
21	Reitz union to Cabana Beach Apt	711	99.16%	6	0.84%	717	36,521	2.0%
23	Oaks Mall to Santa Fe	6,489	99.92%	5	0.08%	6,494	10,666	60.9%
24	Downtown Station to Job Corps	58	77.33%	17	22.67%	75	1,237	6.1%
25	UF Commuter Lot to Airport	136	97.14%	4	2.86%	140	6,450	2.2%
26	Downtown Station to Airport	394	97.04%	12	2.96%	406	9,239	4.4%
27	Downtown Station to NE Walmart Supercenter	63	100.00%	0	0.00%	63	850	7.4%
28	The Hub to Forest Park	169	98.83%	2	1.17%	171	23,858	0.7%
29	Beaty Towers to Kiwanis Park	179	99.44%	1	0.56%	180	7,310	2.5%
33	Butler Plaza to Midtown	582	99.49%	3	0.51%	585	44,232	1.3%
34	The HUB to Lexington Crossing	450	98.25%	8	1.75%	458	28,570	1.6%
35	Reitz Union to SW 35th Place	1,180	98.83%	14	1.17%	1,194	66,407	1.8%
36	Reitz Union to SW 34th St Post Office	76	93.83%	5	6.17%	81	13,462	0.6%
37	Reitz Union to Butler Plaza (via SW 35th Place)	1,021	96.69%	35	3.31%	1,056	24,616	4.3%
38	The Hub to Gainesville Place	317	95.20%	16	4.80%	333	77,940	0.4%
39	Santa Fe to Airport	1,966	99.90%	2	0.10%	1,968	3,132	62.8%
40	HUB to Hunters Crossing	73	98.65%	1	1.35%	74	4,283	1.7%
43	Shands to Santa Fe	4,723	99.75%	12	0.25%	4,735	18,923	25.0%
46	Reitz Union to Downtown Station	230	95.83%	10	4.17%	240	20,214	1.2%
62	Oaks Mall to Lexington Crossing	0		0				
75	Oaks Mall to Butler Plaza	1,731	99.48%	9	0.52%	1,740	18,434	9.4%
76	Santa Fe to Haile Square Market	3,088	99.94%	2	0.06%	3,090	3,935	78.5%
77	Santa Fe to Cabana Beach Apts	3,270	100.00%	0	0.00%	3,270	3,760	87.0%
117	Park-N-Ride 2 (SW 34th St.)	1	25.00%	3	75.00%	4	9,438	0.0%
118	Park-N-Ride 1 (Cultural Plaza)	25	83.33%	5	16.67%	30	52,568	0.1%
119	Family Housing	3	30.00%	7	70.00%	10	6,163	0.2%
120	West Circulator (Fraternity Row)	2	22.22%	7	77.78%	9	27,219	0.0%
121	Commuter Lot	329	97.63%	8	2.37%	337	7,635	4.4%
122	UF North/South Circulator	16	94.12%	1	5.88%	17	9,169	0.2%
125	Lakeside	64	92.75%	5	7.25%	69	17,336	0.4%
126	UF East/West Circulator	15	88.24%	2	11.76%	17	14,100	0.1%
127	East Circulator (Sorority Row)	5	83.33%	1	16.67%	6	42,938	0.0%
128	Reitz Union to Lake Wauburg		#DIV/0!		#DIV/0!	0	0	#DIV/0!
300	Later Gator A (Fraternity Row to and from Downtown Station)	9	90.00%	1	10.00%	10	1,635	0.6%
301	Later Gator B (SW Gainesville to and from Downtown Station)	32	100.00%	0	0.00%	32	1,633	2.0%
302	Later Gator C (Oaks Mall to and from Downtown Station)	261	100.00%	0	0.00%	261	2,519	10.4%
303	Later Gator D (CareerSource to and from Downtown Station)	3	100.00%	0	0.00%	3	140	2.1%
305	Later Gator F (Butler Plaza to and from Downtown Station)	12	70.59%	5	29.41%	17	274	6.2%
711	Downtown Station to Eastwood Meadows	225	100.00%	0	0.00%	225	2,913	7.7%
800X	Santa Fe to Butler Plaza	1,397	99.71%	4	0.29%	1,401	1,730	81.0%
Total		57,195	99.03%	558	0.97%	57,753	1,065,398	5.42%

**Gainesville-RTS Passenger Ranks
Monthly Report (September 2018)**

Route	City	Passengers	Pass./Hr	Rank of Passenger	Productivity
1	Downtown Station to Butler Plaza	52,217	35	7	20
2	Downtown Station to NE Walmart Supercenter	6,421	21	38	38
3	Downtown Station to N Main Post Office	2,735	18	45	44
5	Downtown Station to Oaks Mall	34,277	28	12	27
6	Downtown Station to Plaza Verde	7,029	23	36	36
7	Downtown Station to Eastwood Meadows	7,044	27	35	28
8	Shands to North Walmart Supercenter	28,558	29	14	25
9	Reitz Union to Hunters Run	55,625	46	5	8
10	Downtown Station to Santa Fe	10,887	24	27	34
11	Downtown Station to Eastwood Meadows	8,167	19	32	41
12	Reitz Union to Butler Plaza	57,965	42	4	14
13	Beaty Towers to CareerSource	43,395	54	9	6
15	Downtown Station to NW 13th St (@ NW 23rd Ave)	20,371	31	18	23
16	Beaty Towers to Sugar Hill	11,282	29	26	26
17	Beaty Towers to Downtown Station	11,439	45	25	12
19	Reitz Union to SW 23rd Terr @ SW 35th Place	1,177	26	51	29
20	Reitz Union to Oaks Mall	87,090	49	1	7
21	Reitz Union to Cabana Beach	36,521	43	11	13
23	Oaks Mall to Santa Fe	10,666	23	28	37
24	Downtown Station to Job Corps	1,237	8	50	50
25	UF Commuter Lot to Airport	6,450	23	37	35
26	Downtown Station to Airport	9,239	32	30	22
27	Downtown Station to NE Walmart Supercenter	850	11	52	47
28	The Hub to Forest Park	23,858	36	17	16
29	Beaty Towers to Kiwanis Park	7,310	36	34	17
33	Butler Plaza to Midtown	44,232	34	8	21
34	The HUB to Lexington Crossing	28,570	35	13	19
35	Reitz Union to SW 35th Place	66,407	46	3	9
36	Reitz Union to SW 34th St Post Office	13,462	36	24	18
37	Reitz Union to Butler Plaza (via SW 35th Place)	24,616	46	16	10
38	The Hub to Gainesville Place	77,940	82	2	2
39	Santa Fe to Airport	3,132	16	43	45
40	HUB to Hunters Crossing	4,283	14	40	46
43	Shands to Santa Fe	18,923	26	20	30
46	Reitz Union to Downtown Station	20,214	60	19	5
75	Oaks Mall to Butler Plaza	18,434	25	21	31
76	Santa Fe to Haile Square Market	3,935	21	41	39
77	Santa Fe to Cabana Beach Apts	3,760	24	42	33
117	Park-N-Ride 2 (SW 34th St.)	9,438	41	29	15
118	Park-N-Ride 1 (Cultural Plaza)	52,568	62	6	4
119	Family Housing	6,163	31	39	24
120	West Circulator (Fraternity Row)	27,219	68	15	3
121	Commuter Lot	7,635	19	33	42
122	UF North/South Circulator	9,169	24	31	32
125	Lakeside	17,336	46	22	11
126	UF East/West Circulator	14,100	20	23	40
127	East Circulator (Sorority Row)	42,938	103	10	1

128	Reitz Union to Lake Wauburg			55	55
300	Later Gator A (Fraternity Row to and from Downtown Station)	1,635	5	48	52
301	Later Gator B (SW Gainesville to and from Downtown Station)	1,633	7	49	51
302	Later Gator C (Oaks Mall to and from Downtown Station)	2,519	10	46	48
303	Later Gator D (CareerSource to and from Downtown Station)	140	2	54	54
305	Later Gator F (Butler Plaza to and from Downtown Station)	274	4	53	53
711	Downtown to E. Meadows	2,913	18	44	43
800X	Santa Fe to Butler Plaza	1,730	9	47	49