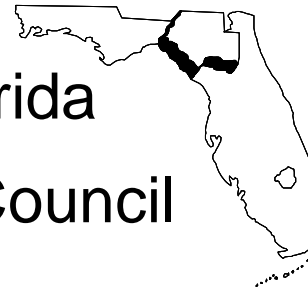


Bus Rapid Transit

MTPO Plans and Policies



North Central Florida
Regional Planning Council



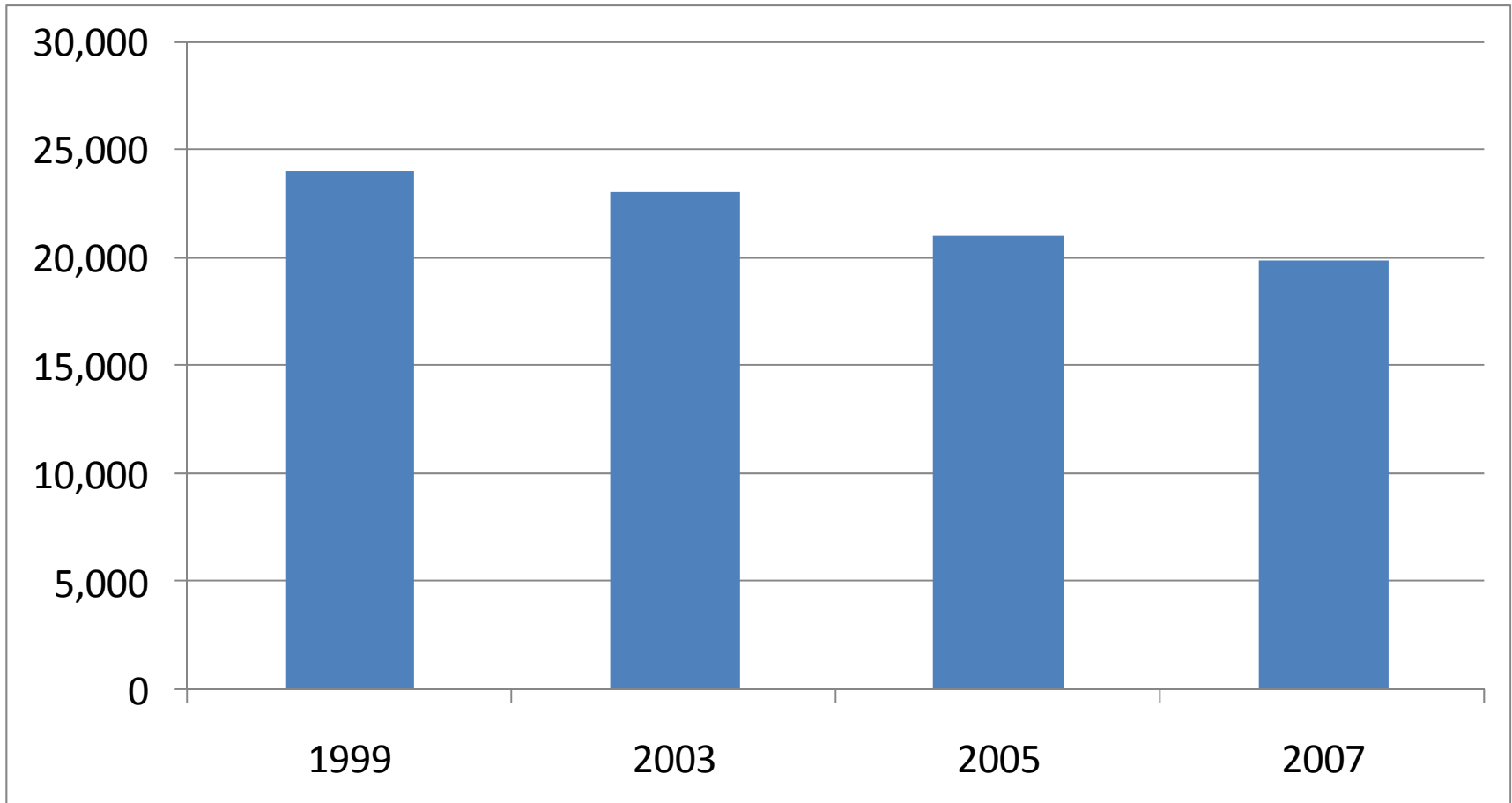
Voting Members



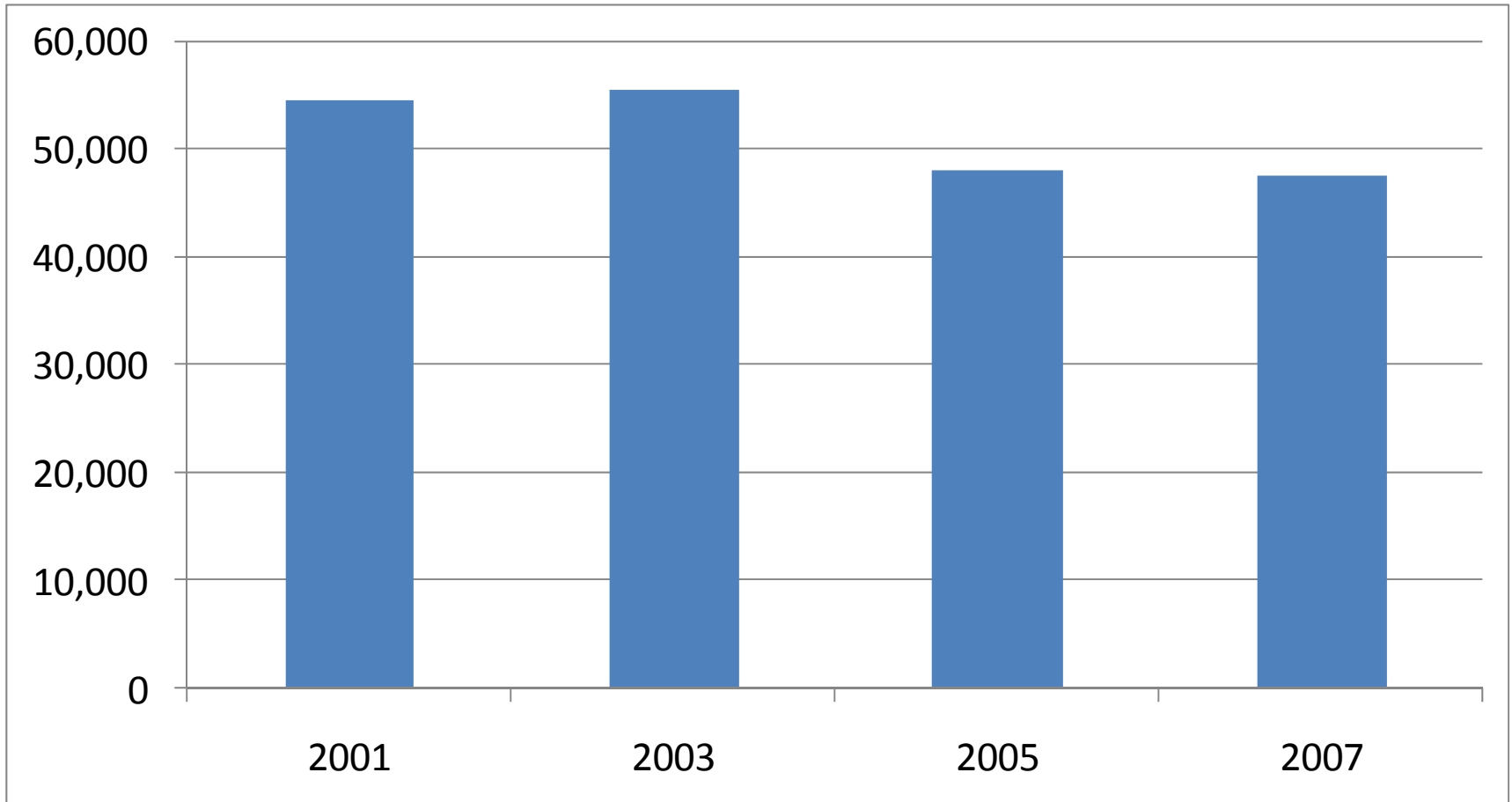
A future we want to avoid...



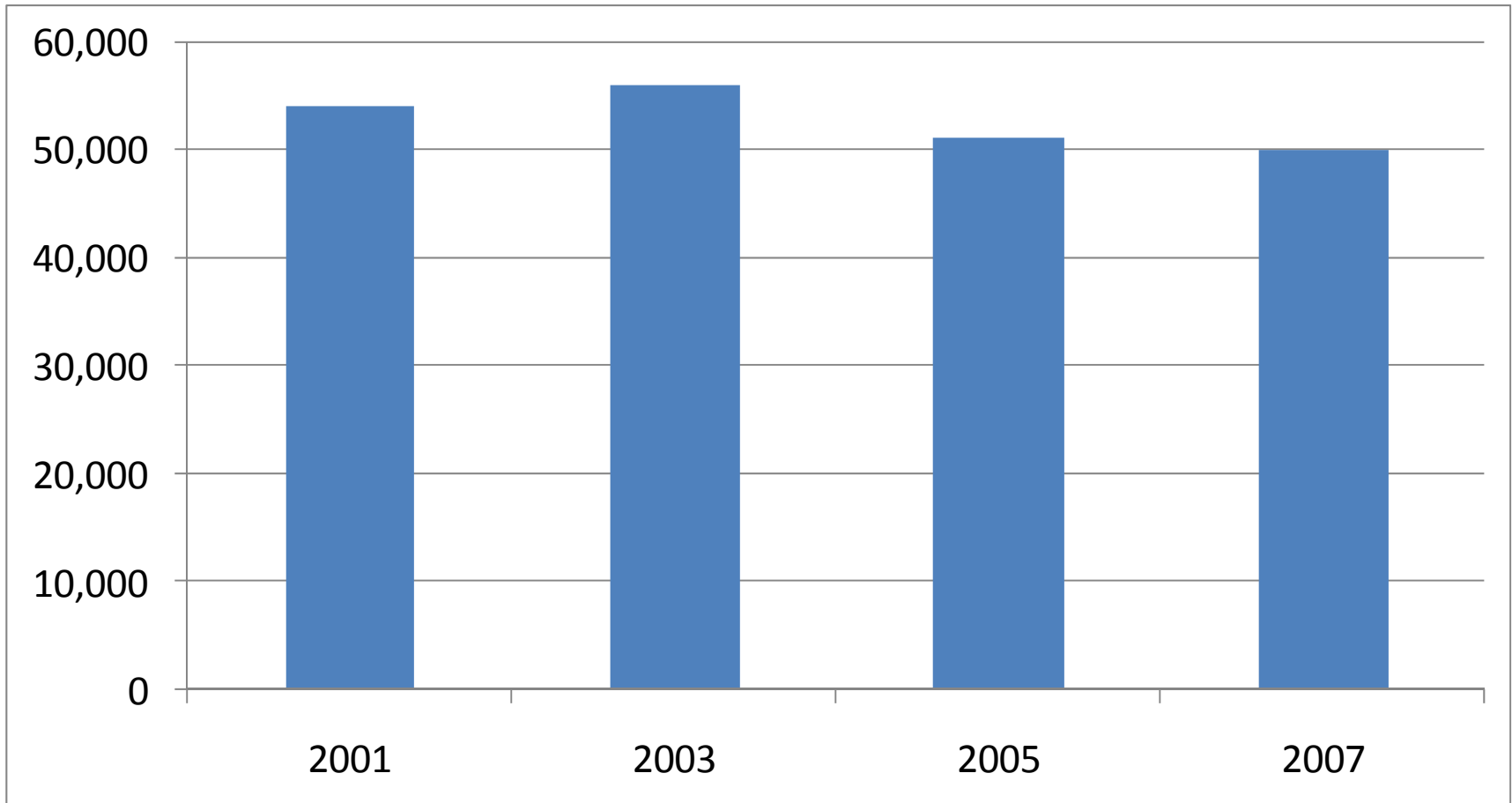
SW 13th Street at UF- Daily Traffic



SW 34th Street at Hull Rd- Daily Traffic



Archer Road east of SW 34th Street- Daily Traffic



MTPO Livable Community Reinvestment Plan- Year 2020



Gainesville Metropolitan Area - The Livable Community Reinvestment Plan

Making Transportation Investments that Support Livable Communities and Neighborhoods

Uniquely Gainesville

Because transportation plays such an important role in shaping the pattern and character of development, it is essential that transportation investments be made to support important growth management and land development objectives. The policy direction of the City of Gainesville and Alachua County is to encourage expanded transportation choices, such as walking, bicycling and using public transit, using a range of growth management and redevelopment strategies.

The Growth Dynamic

Suburban growth toward the west has been the trend in the Gainesville area for more than 20 years, resulting in longer commutes and increasing congestion. Most of this growth is single use subdivisions, which is a land use pattern that requires near absolute reliance on the automobile for work, shopping, recreation and social activities.

Gainesville's westward growth places a heavy demand on the limited road network, fueling the

need for wider roads as commuters and students travel to the University of Florida and downtown Gainesville.

Growth will occur in Gainesville and Alachua County, reaching 280,000 residents by 2020. The challenge for the entire community is to ensure that growth occurs in a manner that maintains the high quality of its new and established neighborhoods, preserves natural resources and makes more efficient use of existing public infrastructure.

Challenges

- Lack of street connectivity
- Uncomfortable streets for walking and bicycling
- Suburban sprawl development patterns and unbalanced growth
- Impacts to existing neighborhoods and changes in town character
- Preservation of natural resources and habitat
- Limited travel options
- Inadequate bus service coverage
- Traffic congestion/safety on major roadways



Goal Statements

1. Develop and maintain a balanced transportation system that supports the economic vitality and quality of life in the Gainesville metropolitan area through expanded transportation choices, improved accessibility and the preservation of environmental, cultural and historic areas.
2. Develop and maintain a sustainable transportation system that supports and preserves the existing transportation network through compact development patterns, improved system management and operators, and inter-agency coordination.
3. Develop and maintain a safe transportation system for all users and neighbors of transportation facilities and services.

Vision Statement

In recognition of the guiding principles and technical analysis, the vision statement for the 2020 Transportation Plan is to:

"make transportation investments that support livable community centers and neighborhoods by:

1. Re-investing in the traditional core areas of Gainesville and the towns of Alachua County to develop walkable downtown centers.
2. Connecting a limited number of highly developed mixed-use centers, and
3. Providing a high level of premium transit service in a linear Archer Road corridor."



ABOVE: Premium transit (dedicated busway) along Archer Road will serve the Shands/VA medical complex, the region's major employment center

BELOW LEFT: A mix of old and new: the Hippodrome and Union Street Station anchor downtown Gainesville's commercial and residential revival

BELOW: Public transit service in and around the University of Florida is a cornerstone of the metropolitan area's transportation system



MTPO Livable Community Reinvestment Plan- 2020

- Walkable Downtown Centers



MTPO Livable Community Reinvestment Plan- 2020

- Mixed Use Centers



MTPO Livable Community Reinvestment Plan- 2020

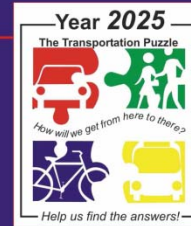
- Archer Road- Bus Rapid Transit



MTPO Livable Community Reinvestment Plan- 2025

SUMMARY REPORT

Gainesville Metropolitan Area Year 2025 Livable Community Reinvestment Plan



Adopted November 3, 2005



The Corradino Group, Inc.

Prepared by the:
**Metropolitan Transportation Planning
Organization (MTPO) for the Gainesville
Urbanized Area**

City Commissioners
Pegeen Harrahan, Mayor
Chuck Chestnut, Mayor - Commissioner Pro Tem
Warren Nielsen
Ed Braddy
Jack Donovan
Rick Bryant
Craig Lowe

County Commissioners
Lee Pinkoson
Paula M. Delaney
Cynthia Moore Chestnut
Mike Byerly
Rodney J. Long

MTPO Nonvoting Members
*Charles Baldwin, Florida Department of
Transportation District 2*
Ed Poppell, University of Florida
Hawthorne City Commissioner John Martin, Rural Advisor

The North Central Florida Regional Planning Council
provides staff support to the MTPO.
The MTPO staff can be reached at:
2009 N.W. 67 Place, Suite A
Gainesville, FL 32653-1603
(352) 955-2200 Voice
(352) 955 2209 Fax
Www.ncfrc.org

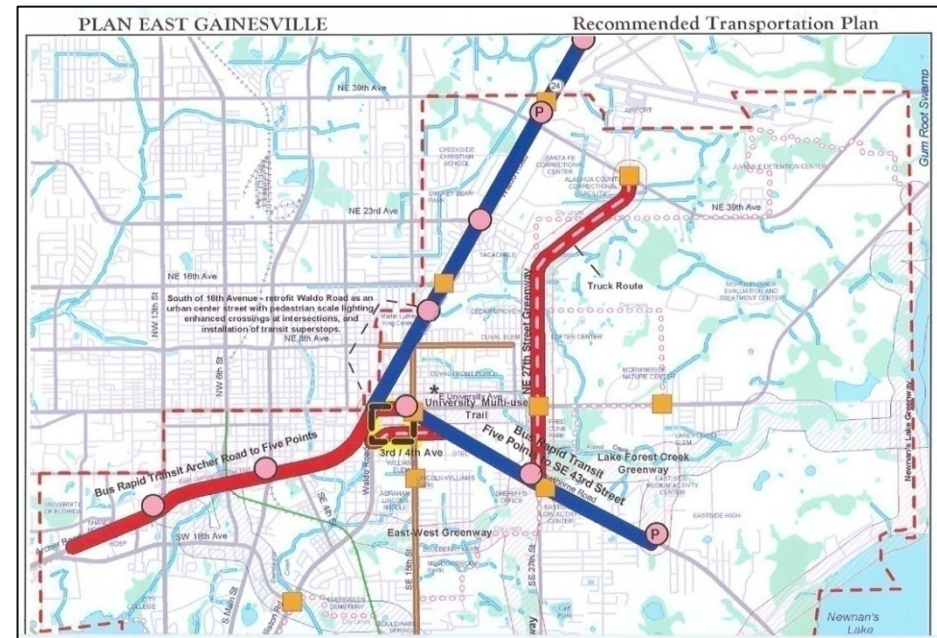


North Central Florida
Regional Planning Council



Vision Statement

- Create more balance in east-west Gainesville area growth



Plan East Gainesville- Bus Rapid Transit



Source: Plan East Gainesville Final Report Page 70

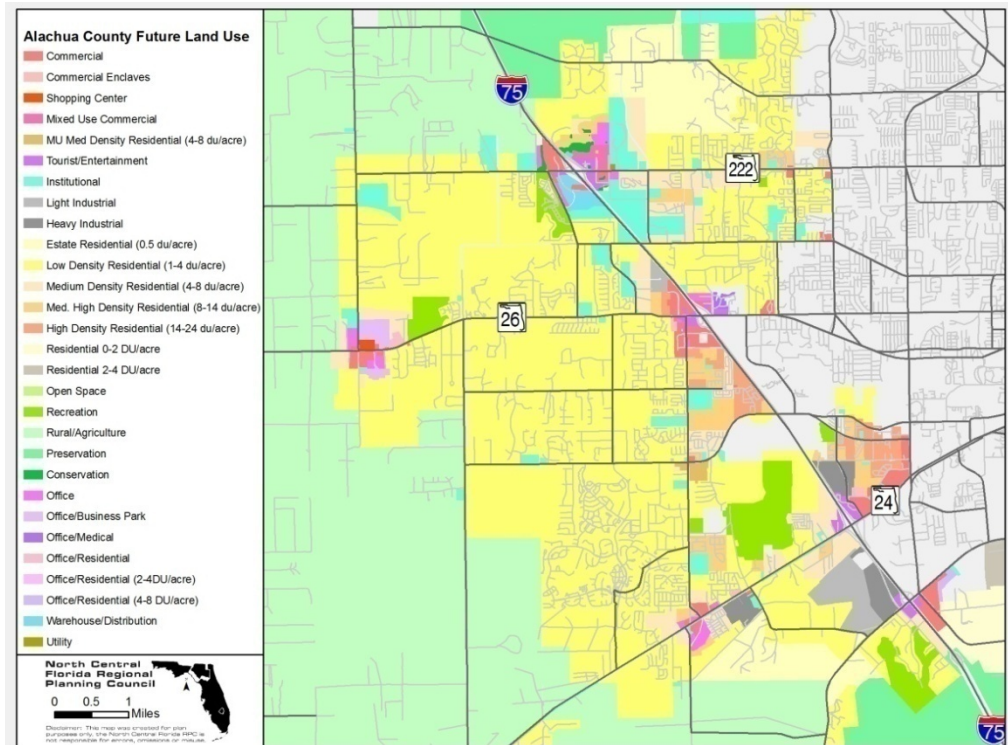
First Goal Statement

- Develop a balanced transportation system that expands transportation choice



Second Goal Statement

- Preserve the existing transportation network through compact development patterns



Year 2025 Needs Plan - Proposed Transit Projects



Enhanced Routes

- 11- Bus Frequency 15 Minutes
- 3- Bus Frequency 10 Minutes
- 6- Bus Frequency 5 Minutes



Six Proposed New Routes

North Central Florida
Regional Planning Council

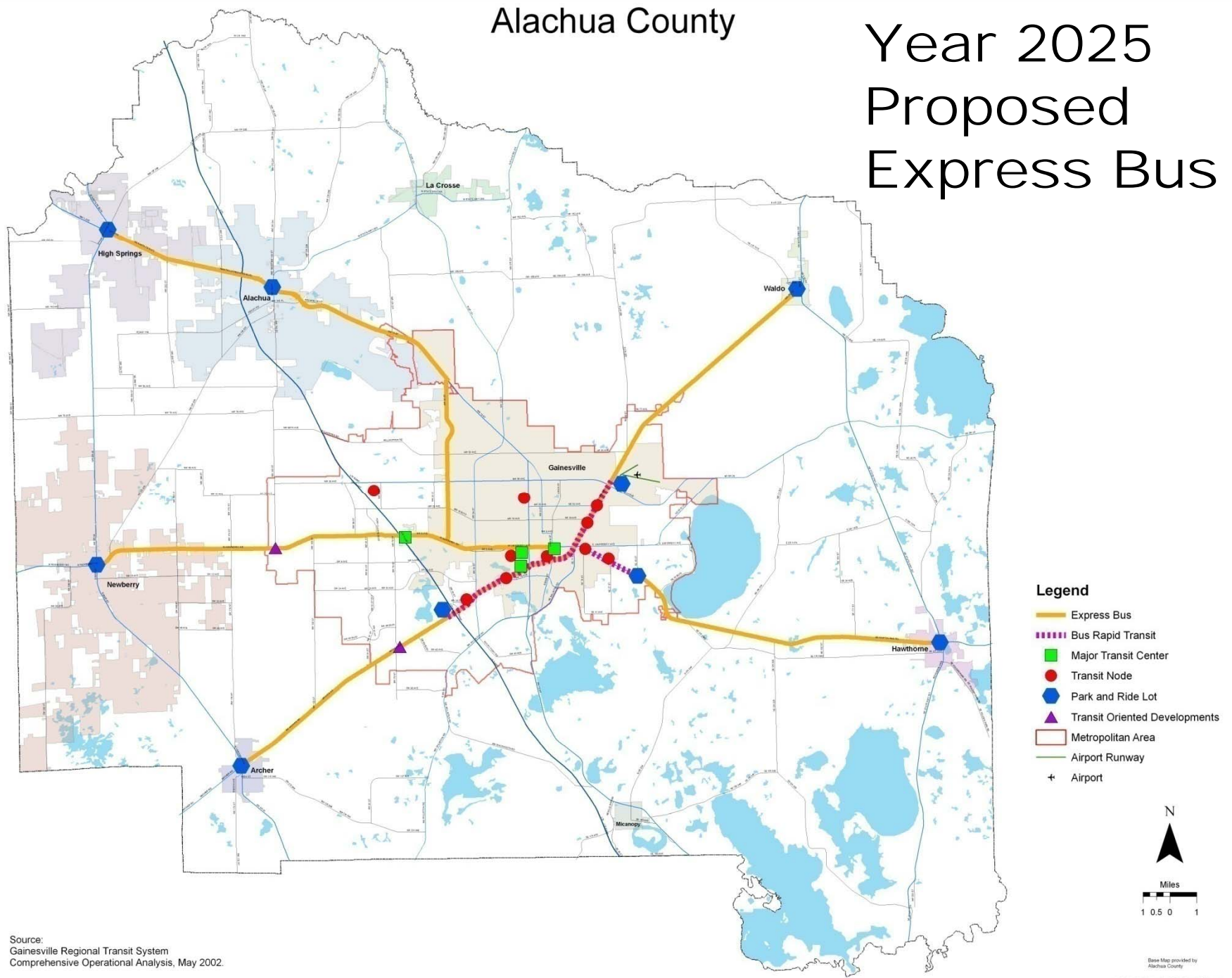


Proposed Express Bus



Alachua County

Year 2025 Proposed Express Bus



Source:
Gainesville Regional Transit System
Comprehensive Operational Analysis, May 2002.

Base Map provided by
Alachua County

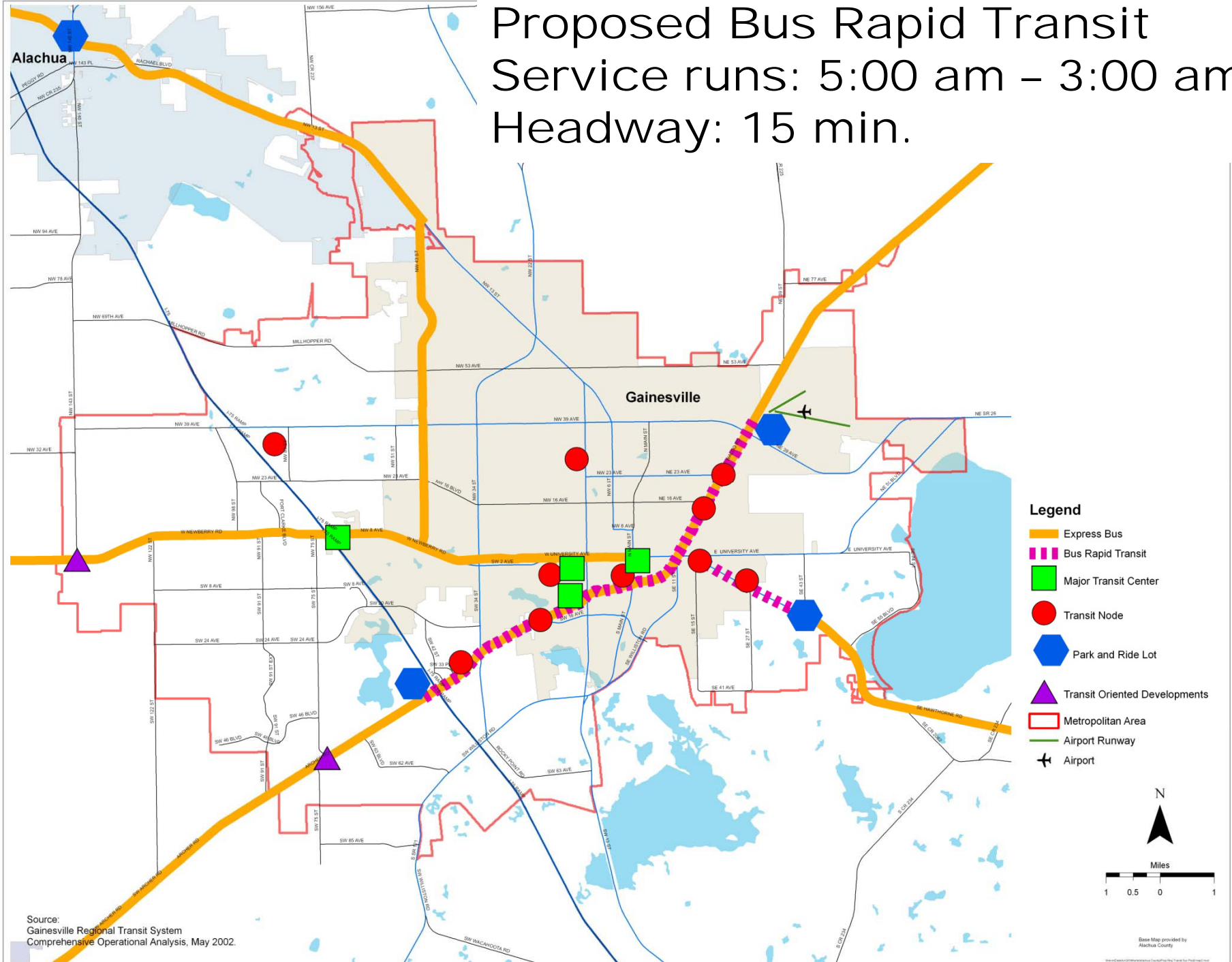
Proposed Bus Rapid Transit

North Central Florida
Regional Planning Council

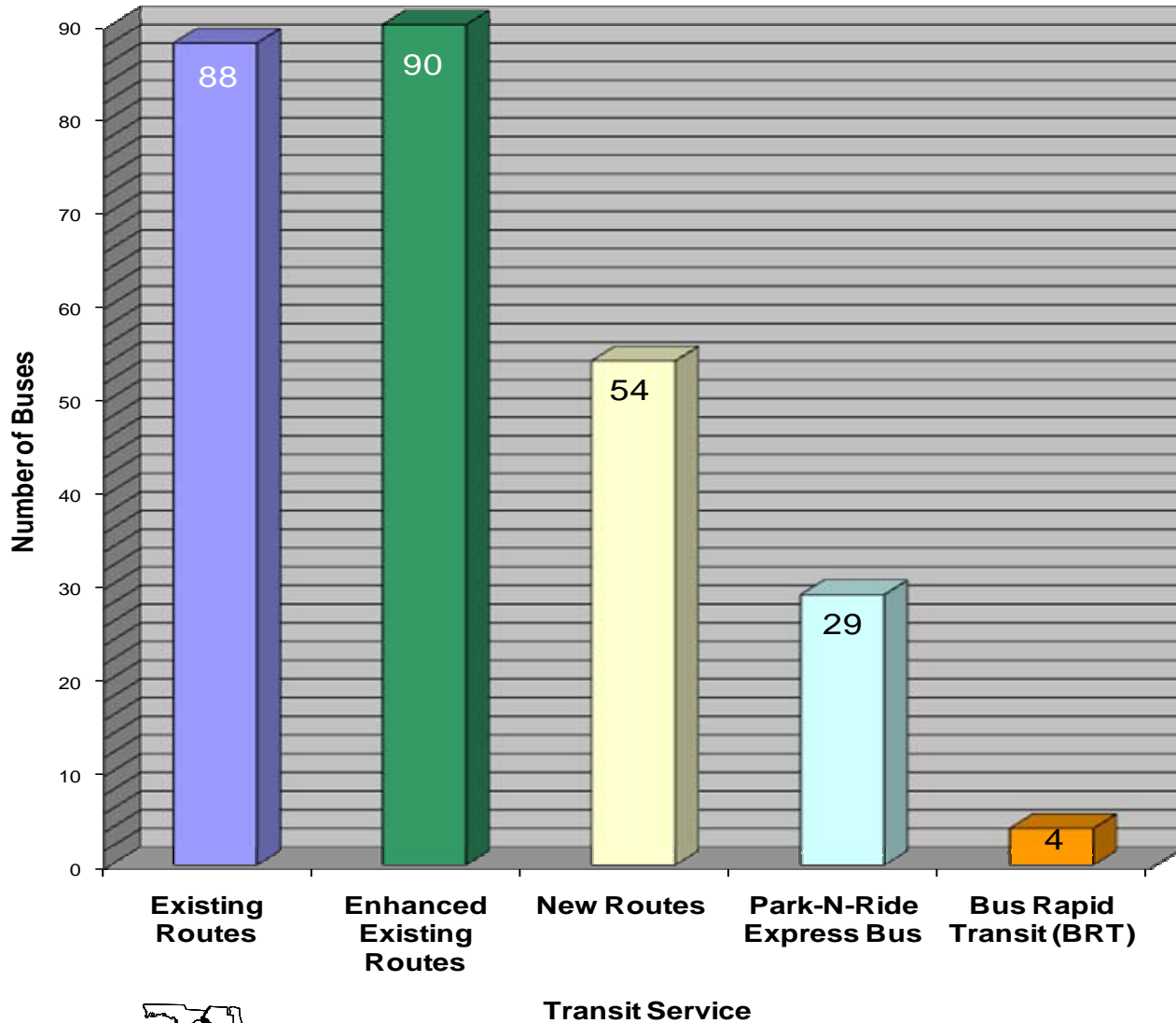


Proposed Bus Rapid Transit

Service runs: 5:00 am – 3:00 am
Headway: 15 min.



MTPO-APPROVED DRAFT NEEDS PLAN TRANSIT SERVICE VEHICLE REQUIREMENTS

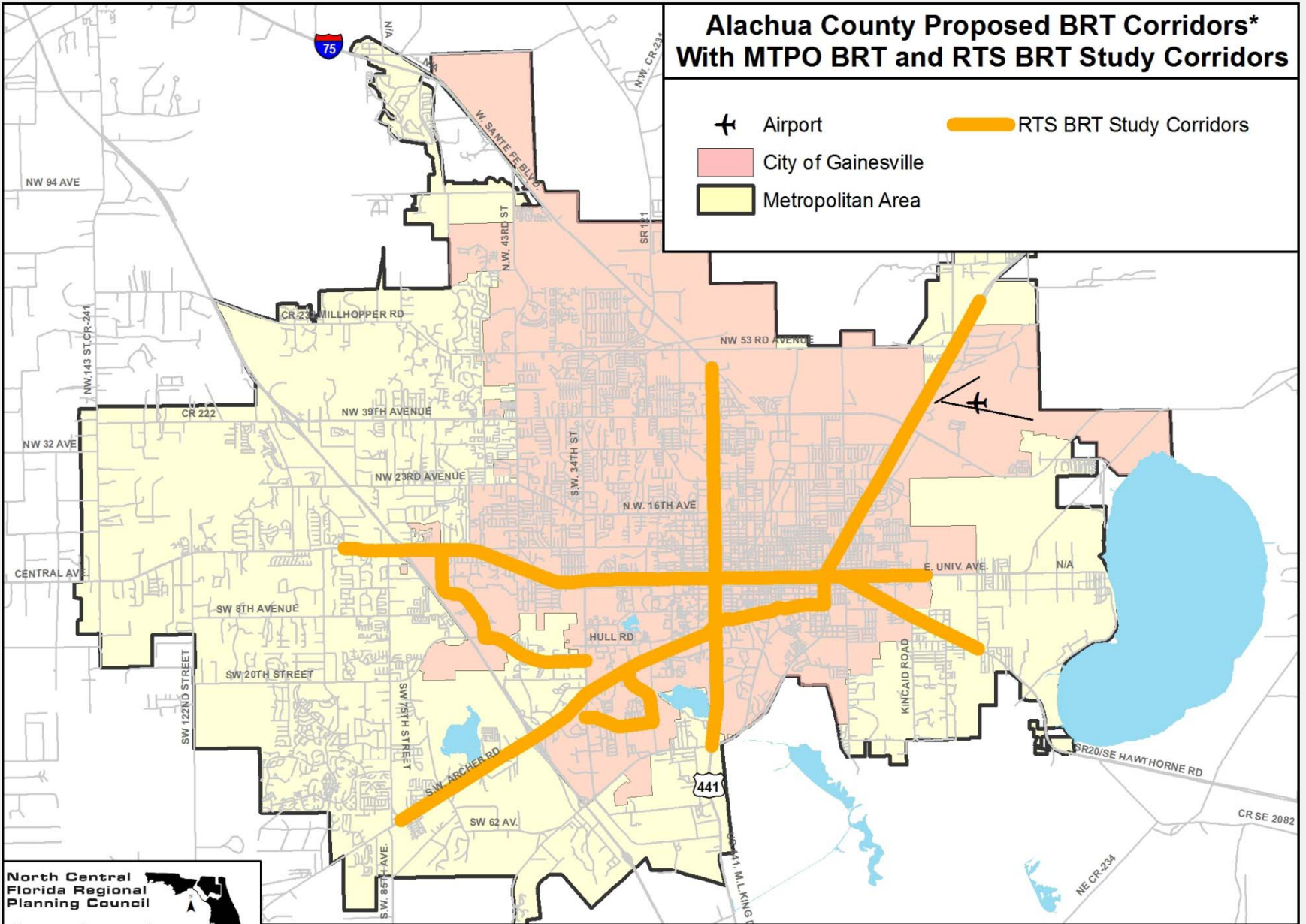


Bus Rapid Transit Feasibility Study




Alachua County Proposed BRT Corridors* With MTPO BRT and RTS BRT Study Corridors

-  Airport
-  City of Gainesville
-  Metropolitan Area
-  RTS BRT Study Corridors



**North Central
Florida Regional
Planning Council**



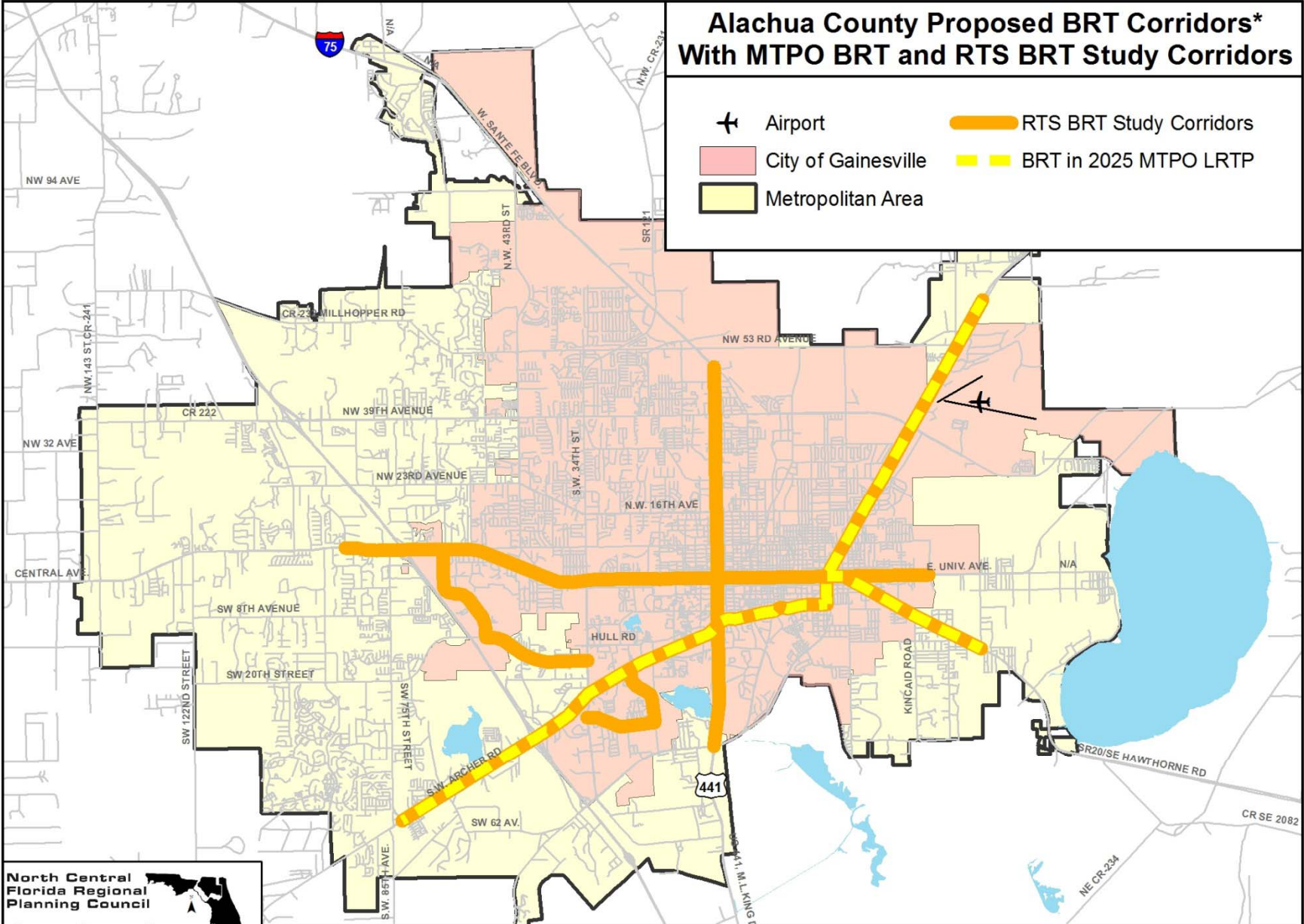
0 1 2
Miles

Disclaimer: This map was created for plan purposes only, the North Central Florida RPC is not responsible for errors, omissions or misuse.

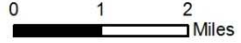
*As interpreted from Draft Long Term Concurrency Management System map located at <http://growth-management.alachua.fl.us/gis/postermats/Bus%20Rapid%20Transit%20Corridor%20Map.pdf>

Alachua County Proposed BRT Corridors* With MTPO BRT and RTS BRT Study Corridors

-  Airport
-  City of Gainesville
-  Metropolitan Area
-  RTS BRT Study Corridors
-  BRT in 2025 MTPO LRTP



North Central Florida Regional Planning Council



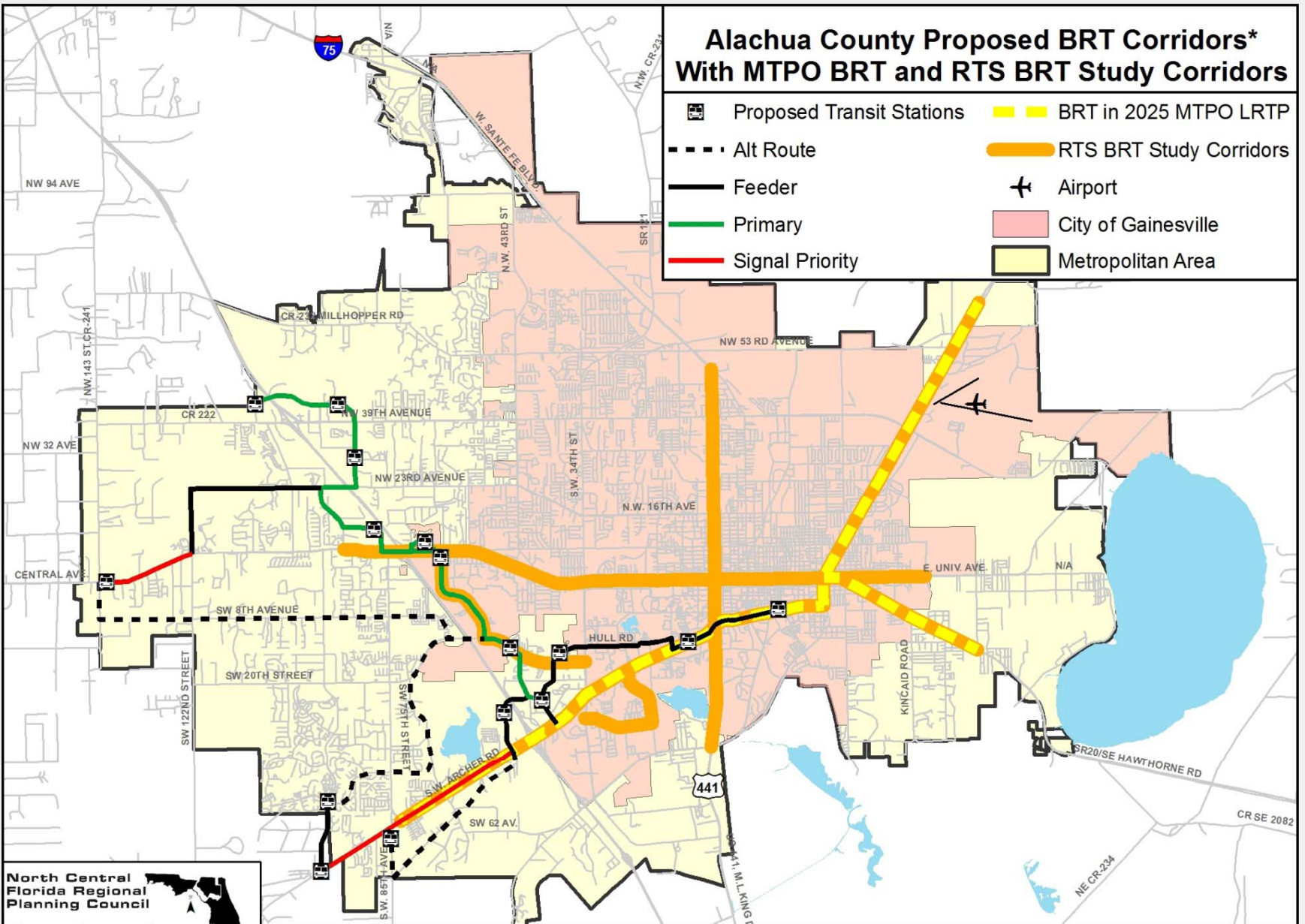
0 1 2 Miles

Disclaimer: This map was created for plan purposes only, the North Central Florida RPC is not responsible for errors, omissions or misuse.

*As interpreted from Draft Long Term Concurrency Management System map located at <http://growth-management.alachua.fl.us/gis/postermaps/Bus%20Rapid%20Transit%20Corridor%20Map.pdf>

Alachua County Proposed BRT Corridors* With MTP0 BRT and RTS BRT Study Corridors

- Proposed Transit Stations
- Alt Route
- Feeder
- Primary
- Signal Priority
- BRT in 2025 MTP0 LRTP
- RTS BRT Study Corridors
- Airport
- City of Gainesville
- Metropolitan Area



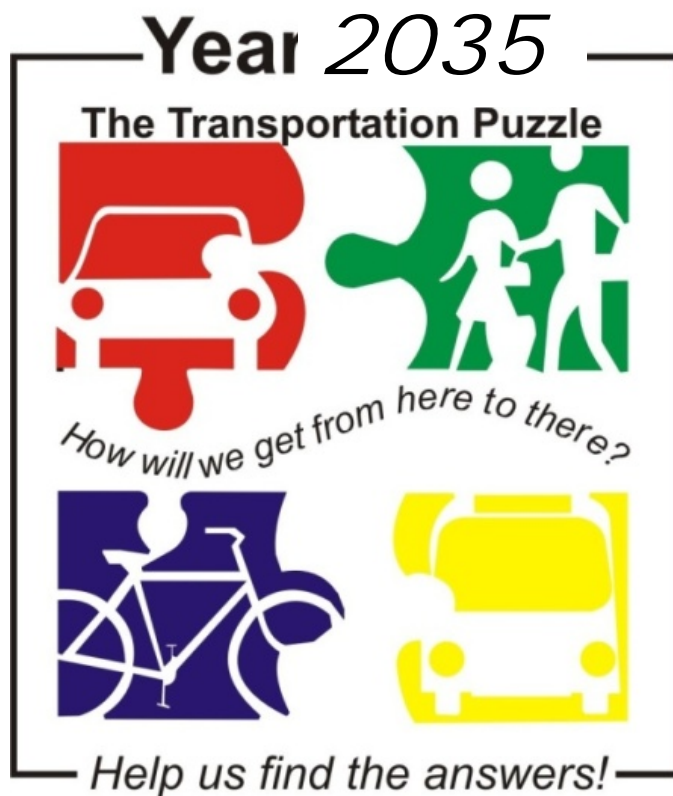
**North Central
Florida Regional
Planning Council**

0 1 2
Miles

Disclaimer: This map was created for plan purposes only, the North Central Florida RPC is not responsible for errors, omissions or misuse.

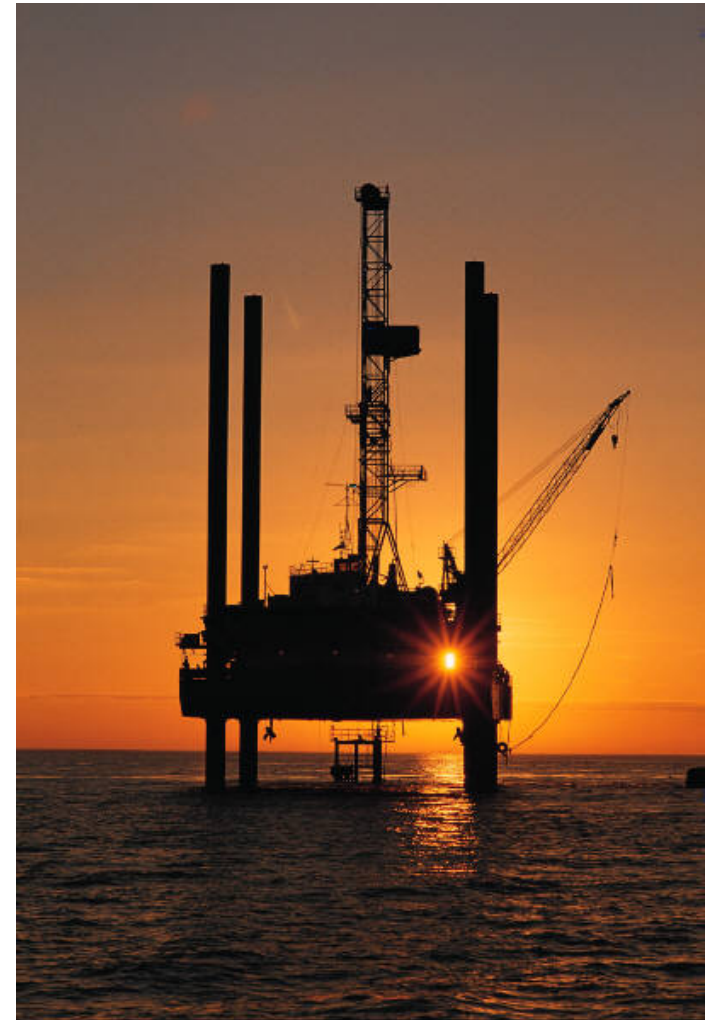
*As interpreted from Draft Long Term Concurrency Management System map located at <http://growth-management.alachua.fl.us/gis/postermaps/Bus%20Rapid%20Transit%20Corridor%20Map.pdf>

MTPO Livable Community Reinvestment Plan- 2035



MTPO Livable Community Reinvestment Plan- 2035

Peak Oil



MTPO Livable Community Reinvestment Plan- 2035

Climate Change



MTPO Livable Community Reinvestment Plan- 2035

Energy Independence



Contact Information:

Marlie Sanderson

Gainesville, Florida MTPO

(352) 955-2200

sanderson@ncfrpc.org



MTPO Livable Community Reinvestment Plan- 2035

Energy Independence

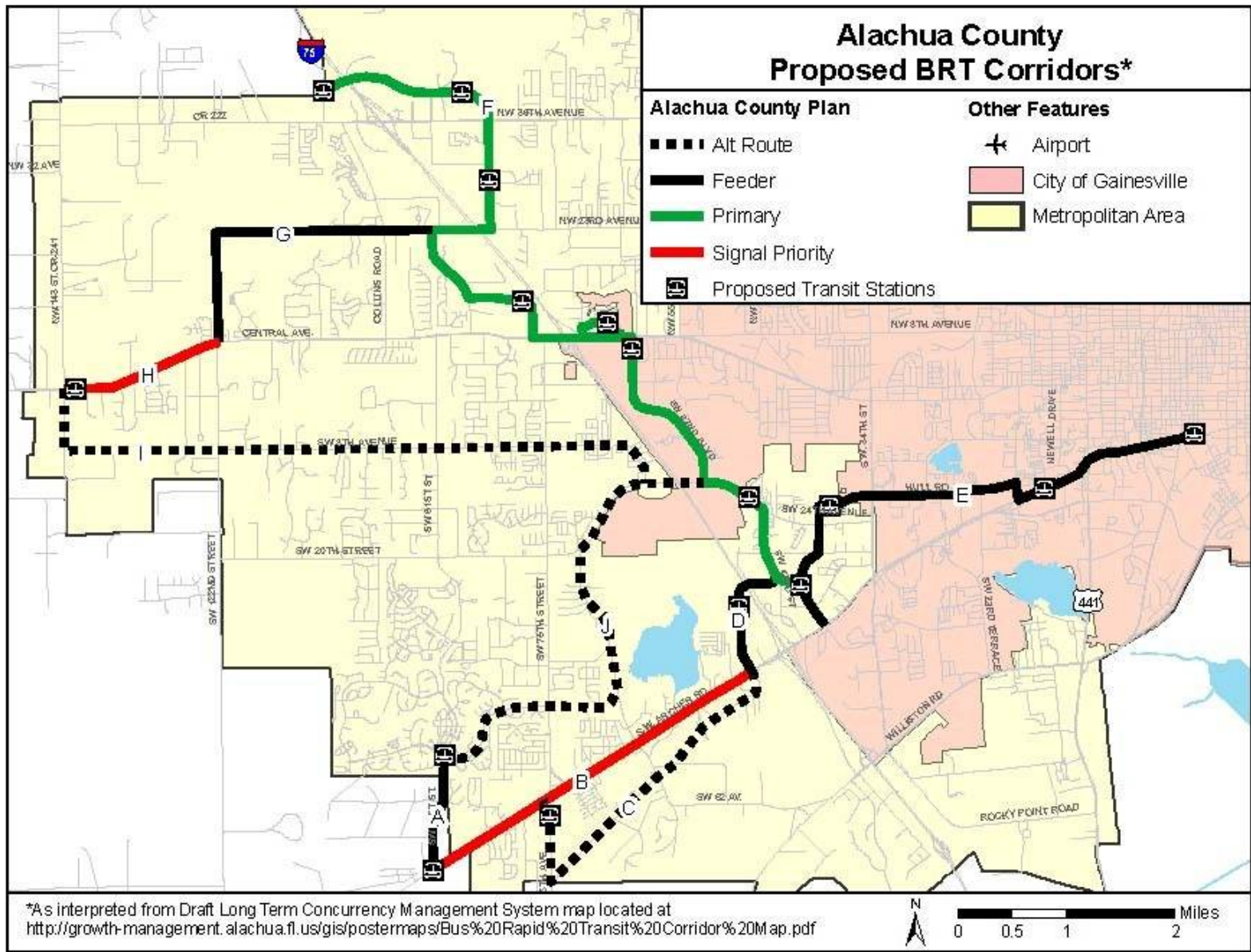


MTPO Livable Community Reinvestment Plan- 2035

Energy Independence







Proposed Bus Rapid Transit





PLAN EAST GAINESVILLE

Recommended Transportation Plan



South of 16th Avenue - retrofit Waldo Road as an urban center street with pedestrian scale lighting, enhanced crossings at intersections, and installation of transit superstops.

Bus Rapid Transit Archer Road to Five Points

Five Points to SE 43rd Street

Truck Route

* University Multi-use Trail

East-West Greenway

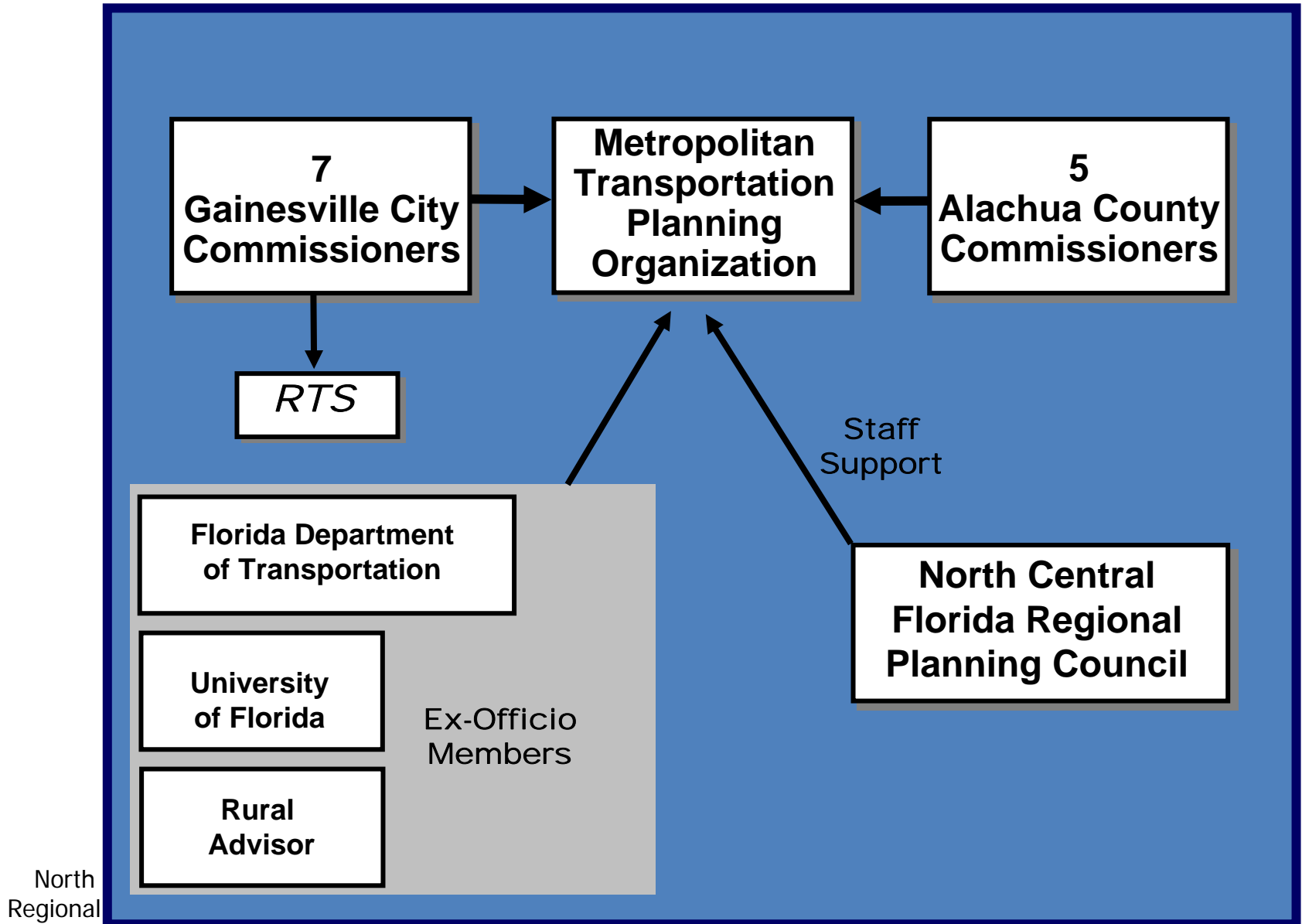
Lake Forest Creek Greenway

Gum Root Swamp

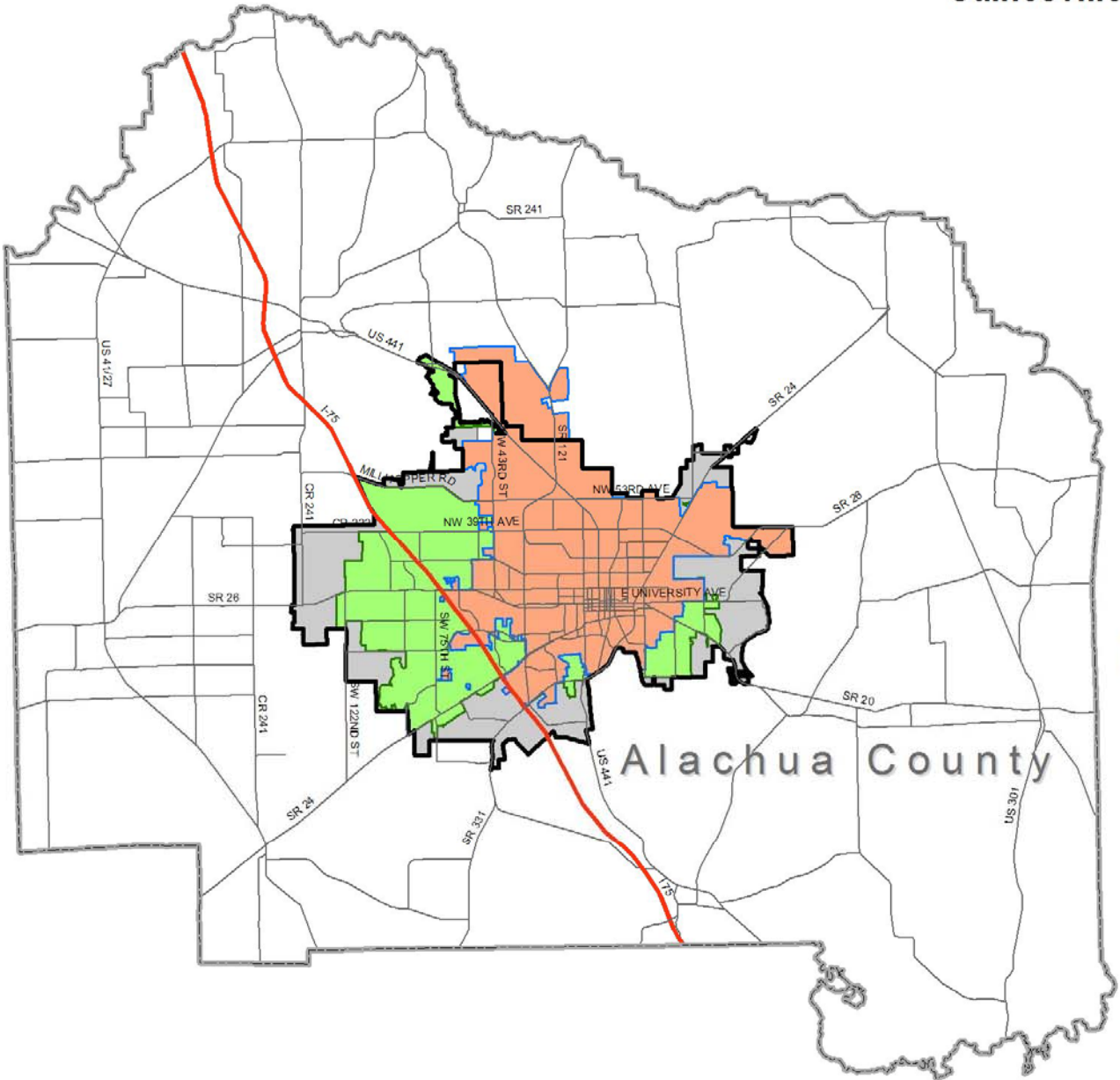
Newnan's Lake Greenway

Newnan's Lake

Gainesville MTPO



Gainesville Metropolitan Area Alachua County

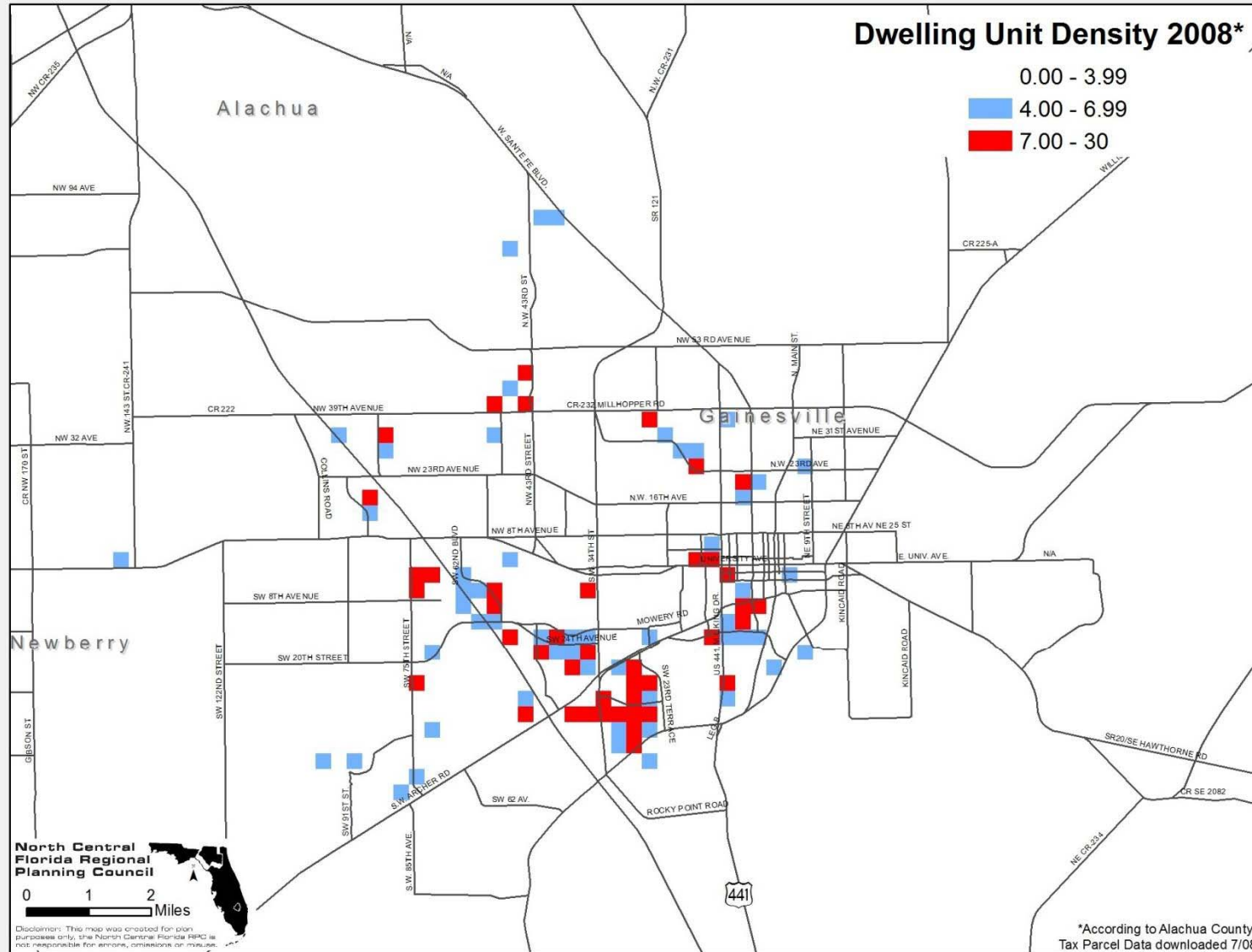


Legend

- Alachua County Boundary
- Major Roads**
- Roads
- Interstate
- Metropolitan Area 2020
- Gainesville City Limits
- Census 2000 Urbanized Area
- Urban Cluster

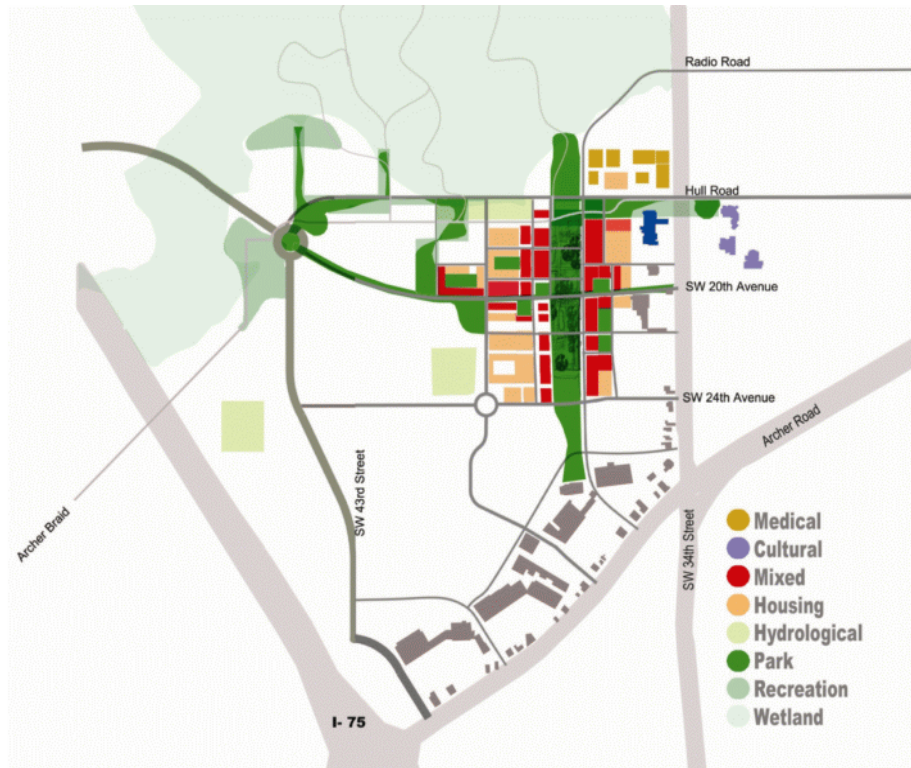


Existing Dwelling Unit Density



URBAN VILLAGE – ACTION PLAN

Integrating Land Use and Transportation



(School of Architecture, University of Florida, 2006)



BRT Density Buffers

